

08 NAVION





SMARTSPACE
WEB

BUILT TO PERFORM.

The 2008 Itasca Navion® is everything a Class C motor home should be: nimble, stylish and loaded with creature comforts. This year the Navion is built on the new Dodge® Sprinter chassis with your choice of a powerful, fuel-efficient Mercedes-Benz® turbo-diesel engine or a sporty 3.5L V6 gas Mercedes-Benz engine. A 5-speed automatic transmission, four-wheel ABS disc brakes and independent front suspension work together for exceptional handling and

performance. You also get the security of Adaptive ESP® technology, that senses vehicle load and performance parameters to maximize handling, control and driving stability. The chassis' new longer wheelbase allows for larger floorplans, while its beefier frame increases the GVWR to 11,030 lbs. and the GCWR to 14,530 lbs. Combine that with the stylish interior and SmartSpace™ features and you get a motor home that begs to be taken on the road: the Itasca Navion.

TRAVEL IN STYLE

Style and performance go hand in hand in the Itasca Navion, which is evident in the elegant curves of the frameless cabinetry and the modern appliances. Contemporary fabrics and chrome hardware complete the bold designs and look of the Navion.

Make quick work of meal preparation and cleanup in a galley that features a large, round, stainless steel sink, a three-burner range top and a microwave/convection oven. Other amenities include a generous double-door refrigerator with a stainless steel façade that resists fingerprints and a wooden sink cover for additional counter space. The available water filtration system provides clear, filtered drinking water to the galley faucet.

Both the furnace and roof air conditioning are controlled with a convenient wall-mounted thermostat for precision climate control. Choose the available heat pump for warmth without using LP. You'll also appreciate the privacy afforded by the day/night pleated shades.



GALLEY Everything is within easy reach with the stylish galley that features a double-door refrigerator/freezer with a "punched" stainless steel façade that is both attractive and resistant to fingerprints.



DINETTE The dinette seats four and houses extra storage. At night this area converts to a comfortable bed.



SKYLIGHT Get fresh air from the skylight that includes a vent and pleated shade.



FULL-EXTENSION DRAWER SLIDES Drawers are sized to maximize storage, hold tight with positive latches and open fully for easy access to stored items.

WEB Select a Key Feature

The **WEB** icon designates a Winnebago Industries Key Feature. For further in-depth information and photos, use the Drop-down Menu or click on the 'Key Features' page at winnebagoind.com.



SMART STORAGE
WEB

EXPECT MORE

The Navion packs more user-friendly features into the available space by employing our SmartSpace design philosophy. SmartSpace incorporates innovative features like the overhead bunk that lifts up for easy access to the cab and a coach stereo system with a CD/DVD player for the 19" LCD TV.

Storage is amazingly plentiful with a wardrobe, cabinets and storage compartments throughout the motor home. A front overhead storage cabinet can replace the bunk if you choose. A skylight lets the sun shine in your Navion and incorporates a pleated shade, sliding screen and a vent for added climate control.

The bathroom features a flexible showerhead, skylight and a retractable shower door that squeegees itself clean each time it's opened. You'll also find a stainless steel sink, chrome fixtures and an abundance of storage.

WEB SMART STORAGE The rear bed in the 24J not only creates a comfortable sleeping space, it flips up to reveal side-by-side storage compartments. One compartment expands to accept large items and can be accessed from outside the motor home. It's another example of our Smart Storage™ design philosophy that maximizes usable storage space.

BUNK BEDS The 24B features bunk beds in the sleeping area. The bottom bunk flips up to expose a large pass-through storage compartment and recessed storage area. It's another example of our Smart Storage design philosophy.



OVERHEAD BUNK For extra storage, choose the overhead cabinet. It holds more gear for extended trips and is accented with rope lighting that creates a warm ambiance. The standard bunk lifts out of the way by day and provides a spacious and comfortable 49" x 75" sleeping space at night.

BUILT FOR PERFORMANCE

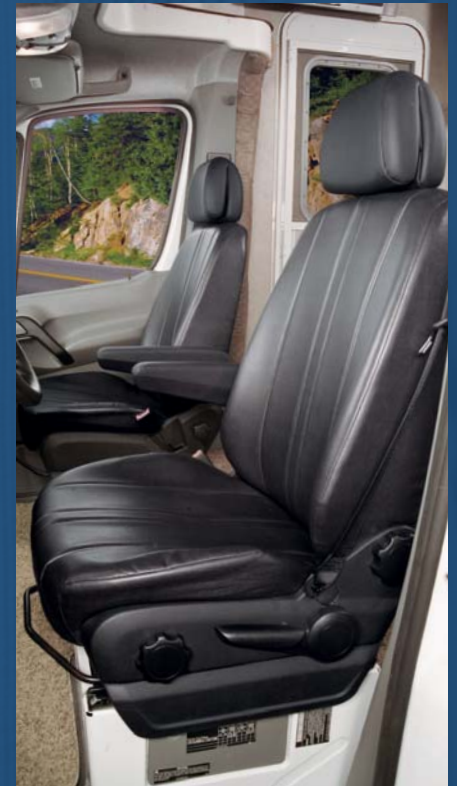
Winnebago Industries® continues to raise the bar, this year offering the Navion on the new Dodge Sprinter chassis with your choice of a 3.5L V6 gas engine or a 3.0L 6-cylinder turbo-diesel engine with an extra boost of power. The Navion makes driving easy with tilt and telescoping steering wheel, and Adaptive ESP technology. This Electronic Stability Program (ESP) helps the driver maintain control by measuring the vehicle's steering angle, turning rate, and acceleration to detect oversteer and understeer and automatically apply brakes when necessary for improved traction and driving stability.

While you drive, set your ideal temperature on the dash thermostat. A handy remote lets you easily play your favorite music on the Sony® dash radio/CD player. It includes an input for your MP3 player and is even iPod-ready so you can listen to and control your iPod through the dash stereo. Choose the Sirius® Satellite Radio and you can dial in crystal-clear programming with a free six-month subscription.

Enjoy the ride in fully-adjustable luxury cab seats with lumbar support for extra comfort. Upgrade the cab seats to UltraLeather™ for a more luxurious ride. When you're parked, the Navion 24H and 24J open wide with a slideroom 6'2" long.



HITCH⁵ Tow your favorite toys with the standard 3,500-lb. hitch with 350-lbs. of vertical tongue weight.



DASH You're in control with a steering wheel that tilts and telescopes into perfect position. You'll also find handy storage areas above the driver and passenger seats, and a ventilated glove compartment to keep things cool. Dual airbags come standard and an available rearview monitor with one-way audio provides added peace of mind when backing and maneuvering. The exterior mirrors are split glass convex and feature remote adjustment, defrost and integrated turn signals.



FLIP-OUT KEY The ignition key folds into the keyless door lock remote so it's always handy and won't poke a hole in your pocket.



HANDLES New handles provide easy access to storage bays.



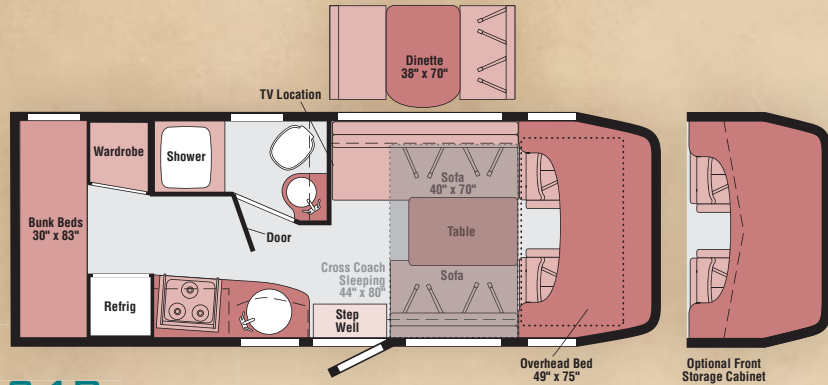
SLIDING STORAGE An easy-to-use pullout storage bin seals tightly to protect your things from dirt and moisture. It even includes a drain plug that makes cleaning easier.

08 NAVION FLOORPLANS

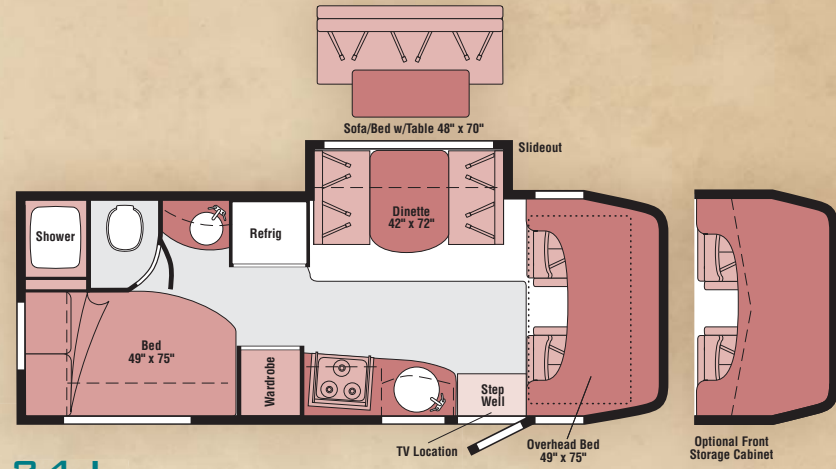
Carpet
 Vinyl Floorcovering

 Seat Belts

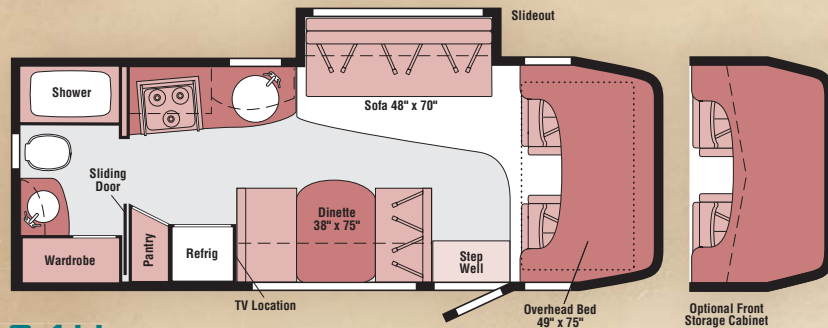
Note: Dimensions shown are for sleeping space only and may vary due to styling differences. Dashed lines denote overhead storage areas.



24B



24J



24H



RUNNING BOARDS Stylish steps make entering the cab easy and help keep your Navion clean.



WEB TRULEVEL Eliminate tank-level guesswork with our exclusive TrueLevel™ holding tank monitoring system. It incorporates detector cells that determine liquid levels from outside the tank. No probes means no more corrosion, just accurate readings, time after time.



EXTERIOR SERVICE CENTERS The exterior service centers house water, drainage facilities and the available exterior wash station. Electrical hookups can also be found here, including a power cord with the QuickPort® service connection hatch (Not available on 24J shown here). This hatch allows you to close the compartment door even when connected to hookups at the campground.

08 NAVION SPECIFICATIONS

WEIGHTS & MEASURES	24B	24H	24J
Length	24'6"	24'6"	24'6"
Exterior Height ¹	10'11"	10'11"	10'11"
Exterior Width	7'6"	7'6"	7'6"
Exterior Storage ² (cu. ft.)	37.9	17.8	25.3
Awning Length	10'	12'6"	10'
Interior Height	6'8"	6'8"	6'8"
Interior Width	7'3"	7'3"	7'3"
Freshwater Capacity w/Heater ³ (gal.)	33	34	34
Holding Tank Capacity - Black/Gray ³ (gal.)	30 / 27	33 / 27	31 / 38
LP Capacity ⁴ (gal.)	18	18	18
Fuel Capacity (gal.)	26.4	26.4	26.4
GCWR ⁵ (lbs.)	14,530	14,530	14,530
GVWR (lbs.)	11,030	11,030	11,030
GAWR - Front (lbs.)	4,410	4,410	4,410
GAWR - Rear (lbs.)	7,720	7,720	7,720
Wheelbase	170"	170"	170"

AUTOMOTIVE/CHASSIS	24B	24H	24J
Dodge® Sprinter Chassis, Turbo-Diesel – w/Adaptive ESP® technology 3.0L CDI 6-cylinder, 154-hp, automatic 5-speed transmission w/tip shift, 4-wheel ABS, independent front suspension, 180-amp. alternator, Trailer Hitch ⁵ 3,500-lb. drawbar/350 lbs. maximum vertical tongue weight & 6-pin wiring connector, Wheelcovers 16" (4)	S	S	S
Dodge Sprinter Chassis, Gas – w/Adaptive ESP technology 3.5L V6, 254-hp, automatic 5-speed transmission w/tip shift, 4-wheel ABS, independent front suspension, 180-amp. alternator, Trailer Hitch ⁵ 3,500-lb. drawbar/350 lbs. maximum vertical tongue weight & 6-pin wiring connector, Wheelcovers 16" (4)	0	0	0

CAB AREA & DRIVER CONVENIENCES	24B	24H	24J
Beverage Holders, Cab Seats (Fabric) armrest, adjustable lumbar support, adjustable headrest, multiadjustable slide/recline, Cruise Control, Curtain cab divider, Document Clip, Glove Box ventilated, Power Cab Windows, Power Door Locks w/remote control, driver/passenger/main entry, Powerpoint 12-volt DC/cigarette lighter, Powerpoint 12-volt DC, Steering Wheel tilt & telescoping, Sunvisors, Trim Panels driver & passenger doors, Windshield Wipers intermittent	S	S	S
Cab Seats UltraLeather, [™] Monitor System rearview w/single camera, 1-way audio	0	0	0

ENTERTAINMENT	24B	24H	24J
Radio (Cab) AM/FM stereo, CD player, MP3 interface & iPod dock, remote, speakers (2) cab & (2) coach, subwoofer, Sony® Radio Power Switch main/auxiliary battery, Satellite System Ready, TV Antenna (Amplified) interior jack, coax wiring, cable input	S	S	S
Stereo System (Coach) AM/FM stereo radio, alarm clock, CD/DVD player, input jack, TV 19" LCD stereo w/remote	S	S	S
Satellite Radio Receiver includes 6-month paid Sirius® subscription	0	0	0

INTERIOR	24B	24H	24J
Bunk front overhead w/hinged mattress, gas struts, bunk ladder, privacy curtain, windows, light, Ceiling fabric, Countertops laminate, Lights halogen, Lights ceiling, incandescent w/wall switches, Light stepwell, Mini Blinds bath, Skylight w/bar handle, sliding screen, sliding pleated shade, Shades day/night pleated (lounges, dinette & galley)	S	S	S
Cabinet front overhead storage w/accent lights	0	0	0

FURNITURE	24B	24H	24J
Dinette w/interior & exterior access to storage below front seat			S
Dinette w/interior access to storage below both seats			S
Dinette	0		S
Sofa w/access to storage below (NA 24B), throw pillow	S	S	
Sofa w/table & access to storage below, throw pillow			0

GALLEY	24B	24H	24J
Faucet dual-control, Microwave/Convection Oven, Range Top 3-burner, Range Hood vented w/light & fan, Receptacle AC duplex, Refrigerator/Freezer large double-door (single-door on 24B), Norcold® Sink round, single-bowl, stainless steel, w/wood sink cover	S	S	S
Countertop Extension pullout	S		
Pantry		S	
Water Filtration System	0	0	0

BATH	24B	24H	24J
Cabinet lavatory, Cabinet medicine, Faucet (Lavatory) dual-control, Faucet (Shower) dual-control w/flexible showerhead, Light shower, Roof Vent powered, Shower Door retractable, Sink round, stainless steel, Skylight	S	S	S
Roof Vent powered ventilator fan	0	0	0

BEDROOM	24B	24H	24J
Bed angle-split mattress, pillows, pillow shams, interior & exterior access to storage below			S
Bunk Beds (2) w/mattresses, privacy curtains, storage pockets	S		

EXTERIOR	24B	24H	24J
Awning Rail w/rain gutter, Bumpers front & rear, Door entrance w/separate screen door, deadbolt lock, remote keyless entry, Entrance Door Steps double, electric w/doorjamb switch, Ladder, Light porch w/interior switch, Mirrors electric remote w/defrost, convex, surface-mounted turn signals, extended arms, Mudflaps front & rear, Pullout Storage Drawer w/sealed lid, Receptacle AC duplex, Sidewall Skin 1-piece, smooth, Steps cab, Storage Compartments w/bottom trunk liner, Windows tinted	S	S	S
Awning patio, manual	0	0	0

SYSTEMS	24B	24H	24J
HEATING & A/C - Automotive Heater/Air Conditioner single climate control, Air Conditioner (Roof) 13,500 BTU, ceiling-ducted w/wall thermostat, Furnace 25,000 BTU (24H & 24J ducted in floor, 24B ducted above floor)	S	S	S
A/C Heat Pump	0	0	0
ELECTRICAL - Auxiliary Start Circuit, Batteries (Coach) (2) Group 24 deep-cycle, Battery (Coach) Disconnect System, Dual Battery charge control (automatic), Electrical Distribution System AC breaker panel, DC automotive-style fuses, 45-amp. converter/charger, Generator Prep Kit, Monitor Panel battery condition gauge, generator hourmeter gauge, generator start/stop switch, holding tank levels, LP tank level, water heater lights, water heater switch, water pump switch, water tank level, Power Cord 30-amp., Service Center (Electrical) cable TV input, power cord, portable satellite dish hookup, QuickPort® service connection hatch (NA 24J)	S	S	S
Generator 3,200-watt Cummins Onan® Quiet Diesel™ (NA gas chassis, NA gas & LP generators), Generator 3,600-watt Cummins Onan MicroQuiet™, LP (requires diesel engine), Generator 4,000-watt Cummins Onan MicroQuiet, gas (requires gas engine)	0	0	0
PLUMBING - Drain water tank, 1" Service Compartment (Drainage/Water) w/colored labels, city water hookup/tank diverter fill, drainage valve, 10' sewer hose, Tank LP, permanent mount w/gauge, TrueLevel™ Holding Tank Monitoring System, Water Heater 6-gallon electronic ignition, LP gas, Water System Winterization Package water heater bypass valve & siphon tube, Water Pump demand	S	S	S
Drainage System heated, electric, Exterior Wash Station w/lighted pump switch, Water Heater 6-gallon electronic ignition, 120 VAC/LP Gas	0	0	0

SAFETY	24B	24H	24J
Airbags driver & passenger, Assist Bar interior, Detectors/Alarms LP leak, smoke, carbon monoxide, Fire Extinguisher 10 BC, Ground Fault Interrupter, Lamps daytime running, fog, Lights rear, high-mount brakelamps, Seat Belts cab, 3-point, Seat Belts lap (in selected areas), Window escape	S	S	S
Child Seat Tether Anchor dinette			S

WARRANTY ⁶	24B	24H	24J
12-month/15,000-mile basic warranty,⁷ 36-month/36,000-mile limited warranty on structure,⁷ 10-year limited parts & labor warranty on roof skin⁷	S	S	S

- The height of each model is measured to the top of the tallest standard feature and is based on the curb weight of a typically equipped unit. The actual height of your vehicle may vary by several inches depending on chassis or equipment variations. Please contact your dealer for further information.
- The load capacity of your motor home is designated by weight, not by volume, so you cannot necessarily use all available space when loading your motor home.
- Capacities are based on measurements prior to tank installation. Slight capacity variations can result due to installation applications.
- Capacities shown are tank manufacturer's listed water capacity (W.C.). Actual filled LP capacity is 80% of listing due to overfilling prevention device on tank.
- Actual towing capacity is dependent on your particular loading and towing circumstances which includes the GVWR, GAWR, and GCWR as well as adequate trailer brakes. Please refer to the Operator's Manual of your vehicle for further towing information.
- See separate chassis warranty.
- See your dealer for complete warranty information.

NA Not Available

S Standard

0 Optional

Not all items available in combination. See dealer for details.

Winnebago Industries® continuing program of product improvement makes specifications, equipment, model availability, and prices subject to change without notice. Comparisons to other motor homes are based on the most recent information available at printing.

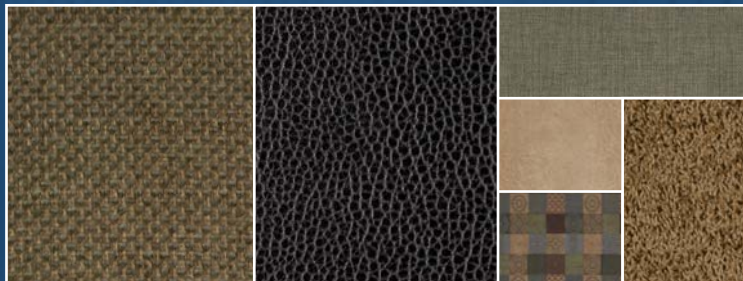
INTERIOR DECOR

Choose from three fabric selections and two cabinet wood choices with hidden hinges.

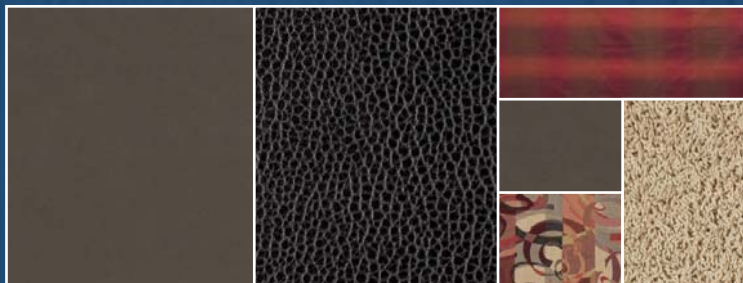


2-TONE
SOFA

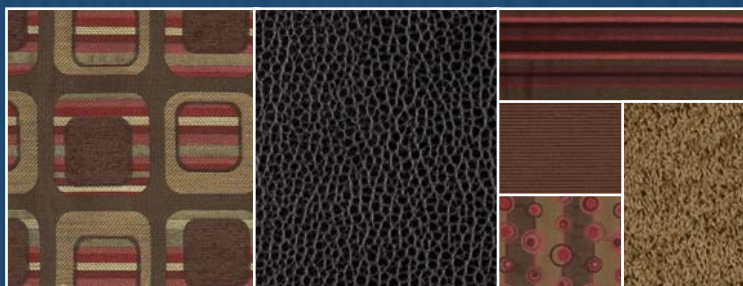
MAIN	ULTRA-LEATHER	BEDSPREAD	
		ACCENT	CARPET
		ACCENT	



Wasabi Green w/available Ebony UltraLeather™



Flagstone w/available Ebony UltraLeather



Rhubarb w/available Ebony UltraLeather



Honey Cherry



Washed Maple

EXTERIOR GRAPHICS



Pewter w/Dark Tundra/Black Cherry/Gold



Pewter w/Wine/Dark Red/Electric Red

A screenshot of the Winnebago Industries website. The browser address bar shows 'http://www.winnebagoind.com/'. The navigation menu includes 'PRODUCTS', 'RESOURCES', 'COMPANY', 'CLUBS/EVENTS', 'CONTACT', and 'DEALERS ONLY'. A 'Select a Key Feature' dropdown menu is visible. The main content area features a large image of a white Winnebago motorhome driving on a winding road. Below the image, there are three promotional banners: 'titanium touch® BEARING COOLERS' with the text 'Refrigerators you won't find anywhere else.', 'TRUE EATS™' with the text 'Cooks 45% Faster, White 15% Quicker!', and 'SIRIUS' with the text 'Available Sirius Satellite Radio.'

WINNEBAGOIND.COM Visit us on the web for more info on all of our motor homes, the latest product updates and a host of web-exclusive content.



**BUILT BY WINNEBAGO INDUSTRIES.
BUILT TO LAST.**

Itasca motor homes are built by Winnebago Industries, the company that defined motor homes. The company that built its reputation on quality construction. The company that transformed the motor home concept into a way of life.

Today, Winnebago Industries brings that reputation for quality and its 49-year history of motor home innovation to the design and construction of every motor home. It's all a part of SuperStructure[®], our exclusive system of proprietary structural components that instills each motor home with improved strength and durability.

SOLID FOUNDATION Steel and aluminum truss work provides a solid, flat foundation for the floor and sidewalls. Winnebago Industries engineers also take special care to distribute the weight of components to ensure proper handling and stability.



INTERLOCKING JOINTS

The floor, sidewalls and roof are all integrally connected using interlocking joints. This creates a coach body that acts as a cohesive unit for improved strength and durability.

E-COATING Winnebago Industries employs an exclusive 12-stage automotive-style dip tank process to apply an advanced electrodeposition coating on critical steel components for superior corrosion protection.



[WEB](#)

THERMO-PANEL[®] SIDEWALLS Invented by Winnebago Industries, Thermo-Panel construction combines a fiberglass panel, high-density, block-foam insulation and aluminum support structures to create some of the most durable, lightweight sidewalls in the industry.

ATTENTION TO DETAIL Whether it's sending every coach through a high-pressure water tunnel to check for leaks or labeling each individual wire and bar-coding parts to save time and frustration during service, Winnebago Industries considers every detail to ensure your Itasca motor home provides you with years of pleasure.

STRONG AS STEEL Appliances are secured directly to embedded steel plates for added safety.



1-year-old Itasca fiberglass roof



1-year-old competitor's rubber roof

FIBERGLASS ROOF The Navion features a crowned, one-piece fiberglass roof, backed with a 10-year limited parts-and-labor roof skin warranty. Fiberglass offers superior strength, attractiveness and durability over the rubber roofs found on many competitive models which can chalk, streak and degrade over time. Fiberglass also provides increased puncture and tear resistance.



TAKE A TOUR We're proud of our process, state-of-the-art facilities and the people who make Winnebago Industries number one. We invite you to visit our factory in Forest City, Iowa, for a first-hand look at the dedication and technology behind every motor home we build.



RECOGNIZED QUALITY The Recreation Vehicle Dealer Association annually rates RV manufacturers and awards the Quality Circle award to manufacturers who provide exceptional products, service and support. Winnebago Industries is proud to be the only manufacturer to receive this award every year since its inception.



COMMITTED TO SERVICE We back our motor homes with the industry's best service after the sale.

- 12-month/15,000-mile basic limited warranty
- 36-month/36,000-mile warranty on structure
- Standard 10-year limited parts-and-labor roof skin warranty
- Complimentary 24-hour roadside assistance program
- TripSaver Fast Track Parts. TripSaver guarantees that in-stock warranty parts ship directly to your dealer within 24 hours.
- National dealer service network



WIT CLUB Itasca owners are like family. Joining the Winnebago-Itasca Travelers is a great way to meet and travel with other Itasca enthusiasts. Members enjoy:

- Caravans and rallies
- Local and state group activities
- RV travel benefits



For Sales and Service Information Contact:



Built proudly by



NYSE listing: WGO

©2007 Winnebago Industries, Inc.

Printed in USA

Seat belts are your most important hookup. Always buckle up.