

# 08 VISTA



## CLASS A COMFORT

Your search for a great Class A motor home at a great value is over. Welcome to the 2008 Winnebago Vista™, loaded with features and SmartSpace™ design elements that make the most of your RVing experience.

Choose from three models with all the comforts of home. Each floorplan includes a complete galley with a microwave oven, range top and available oven for all your cooking needs. A dinette provides a comfortable place to eat and converts into a bed in seconds. The 30B offers a large cabinet that can be used as a pantry or converted to a wardrobe at your choosing.

Stretch out in the expansive slideout that creates a large living area for the contemporary furniture and 24" TV. Large storage areas let you bring more gear, including the rear bed on the 32K that flips up to reveal a large storage compartment with access from the outside, another example of SmartSpace design. If you are ready for Class A comfort and convenience without the cost, step up to the 2008 Winnebago Vista.

**WEB** Select a Key Feature

The **WEB** icon designates a Winnebago Industries Key Feature. For further in-depth information and photos, use the Drop-down Menu or click on the 'Key Features' page at [winnebagoind.com](http://winnebagoind.com).



32K Sandpiper with Sierra Maple

**SMARTSPACE**  
**WEB**

**MODERN CONVENIENCES** Enjoy comfortable conveniences such as beautiful, spacious cabinetry, a residential thermostat and the OnePlace® systems center that places common controls in a single location. The dinette and sofa quickly and easily convert to additional sleeping spaces.



**BEDROOM** Get settled in the bedroom with a walk-around queen-size bed, wardrobe and an abundance of storage cabinets. Opposing windows provide refreshing cross-coach ventilation.



**BUNK BEDS** Bunk beds with available flip-down LCD screens and DVD players on the 32K are perfect for the traveling family.

### EXTERIOR STORAGE

Smart Storage™ employs innovative ideas to let you carry more gear. This includes a large trunk on the 30B and 33T, and a clever side storage compartment on the 32K.



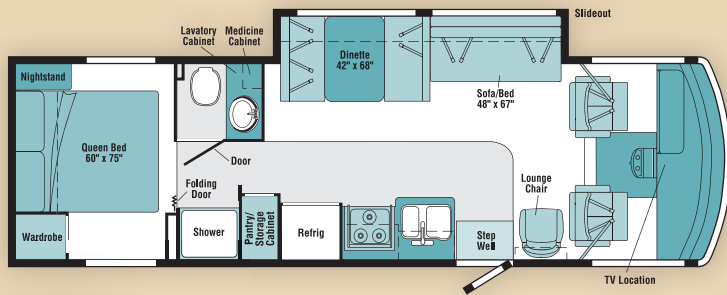
### EXTERIOR SERVICE CENTER

A convenient service center with color-coded labels makes hookups quick and easy.

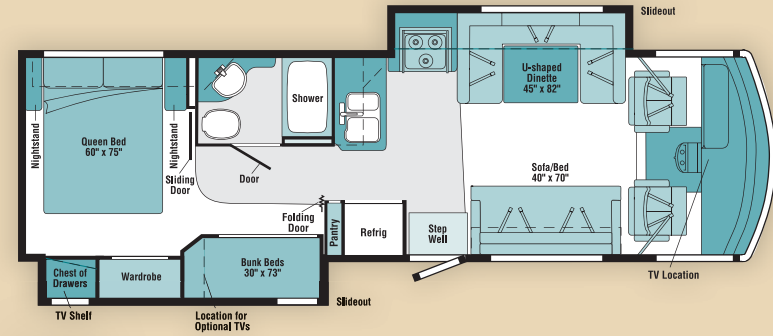
## 08 VISTA FLOORPLANS



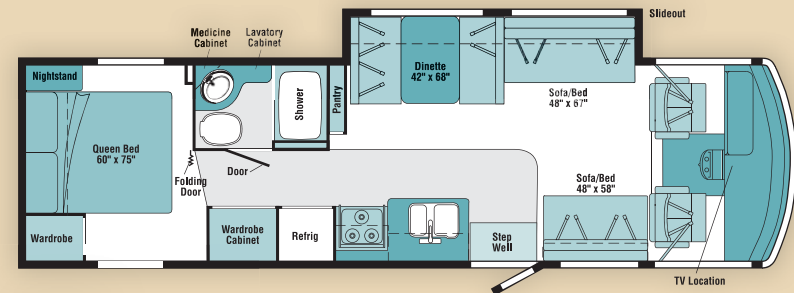
Note: Dimensions shown are for sleeping space only and may vary due to styling differences. Dashed lines denote overhead storage areas.



30B



32K  
NEW



33T

# 08 VISTA SPECIFICATIONS

WEIGHTS & MEASURES			
	30B	32K NEW	33T
Length	30'11"	33'	33'11"
Exterior Height <sup>1</sup>	12'4"	12'4"	12'4"
Exterior Width <sup>2</sup>	8'5.5"	8'5.5"	8'5.5"
Exterior Storage <sup>3</sup> (cu. ft.)	120.8	120.8	161.8
Awning Length	16'	13'	18'
Interior Height	6'8"	6'8"	6'8"
Interior Width	8'0.5"	8'0.5"	8'0.5"
Freshwater Capacity w/Heater <sup>4</sup> (gal.)	62	75	62
Holding Tank Capacity - Black/Gray <sup>4</sup> (gal.)	41 / 57	46 / 58	41 / 57
LP Capacity <sup>5</sup> (gal.)	18	18	18
Fuel Capacity (gal.)	75	75	75
GCWR <sup>6</sup> (lbs.)	26,000	26,000	26,000
GVWR (lbs.)	18,000	20,500	20,500
GAWR - Front (lbs.)	7,000	7,500	7,500
GAWR - Rear (lbs.)	11,000	13,500	13,500
Wheelbase	190"	208"	208"

AUTOMOTIVE/CHASSIS			
	30B	32K	33T
<b>Ford® F53 Chassis</b> – 6.8L Super Duty V10 SOHC Triton® engine, 362-hp, TorqShift™ 5-speed automatic overdrive transmission, hydraulic brakes, 4-wheel ABS, 130-amp. alternator	S	S	S
<b>Trailer Hitch</b> <sup>6</sup> 5,000-lb. drawbar/500 lbs. maximum vertical tongue weight & wiring w/7-pin connector, <b>Wheel Liners (4)</b>	S	S	S
<b>Leveling Jacks</b> hydraulic, controls located on dash, <b>Spare Tire</b>	0	0	0

CAB AREA & DRIVER CONVENIENCES			
	30B	32K	33T
<b>Cab Seats (Fabric)</b> armrests, lumbar support (fixed), multiadjustable slide/recline & swivel, <b>Convenience Tray</b> w/cupholders, <b>Cruise Control</b> , <b>Map Lights</b> , <b>Powerpoint 12-Volt DC/Cigarette Lighter</b> , <b>Receptacle</b> AC duplex, <b>Steering Wheel</b> tilt w/power-assist, <b>Window</b> (driver & passenger) partial slider w/screen, <b>Windshield Wipers</b> intermittent	S	S	S
<b>Monitor System</b> rearview b/w w/single camera & 1-way audio, Audiovox®	0	0	0

ENTERTAINMENT			
	30B	32K	33T
<b>Radio (Cab)</b> AM/FM stereo/CD, speakers (4), <b>C.B. Wire Prep</b> , <b>DVD Cable Ready</b> , <b>Radio Antenna</b> roof-mounted, rubber, <b>Radio Power Switch</b> main/auxiliary battery, <b>Satellite System Ready</b> , <b>TV 24"</b> color AC stereo w/remote, <b>TV Enhancement Package</b> antenna (amplified), 12-volt DC powerpoints, interior jacks, exterior jack, coax wiring, cable input, splitter, TV shelf (32K bedroom only)	S	S	S
<b>DVD w/8.5" LCD Flip Down Screen (2)</b> bunk area, headphones, remotes, aux. input jacks	0	0	0

INTERIOR			
	30B	32K	33T
<b>Ceiling</b> fabric, <b>Countertops</b> laminate, <b>Curtain</b> wraparound w/track (front), <b>Lights</b> ceiling, incandescent, <b>Roof Vent</b> powered (bath), non-powered (lounge), <b>Shades</b> pleated (lounge, dinette & bedroom), <b>Telephone Input</b> interior jack	S	S	S
<b>Vinyl Floorcovering</b> front lounge to bedroom	0	0	0

FURNITURE			
	30B	32K	33T
<b>Dinette</b> w/access to storage below	S		S
<b>Dinette U-Shaped</b> w/access to storage below		S	
<b>Sofa/Bed(s)</b> w/access to storage below (storage NA 32K), removable armrests (2)	S	S	S
<b>Lounge Chair</b> swivel/slide	S		

GALLEY			
	30B	32K	33T
<b>Faucet</b> single-control, <b>Microwave Oven</b> , <b>Pantry</b> , <b>Range Hood</b> vented w/light & fan, <b>Range Top</b> 3-burner w/pot & pan drawer, <b>Receptacle(s)</b> duplex, <b>Refrigerator/Freezer</b> double-door	S	S	S
<b>Range</b> 3-burner (1 high-output) w/oven	0	0	0

BATH			
	30B	32K	33T
<b>Cabinets</b> lavatory, medicine, <b>Faucet (Lavatory)</b> dual-control, <b>Faucet (Shower)</b> dual-control w/flexible showerhead, <b>Shower Door</b> textured glass, <b>Shower Skylight</b>	S	S	S

BEDROOM			
	30B	32K	33T
<b>Bed</b> queen w/innerspring mattress, bedspread	S		S
<b>Bed</b> queen w/innerspring mattress, access to storage below, bedspread, <b>Bunk Beds (2)</b> privacy curtains, shelves, mattress covers		S	

EXTERIOR			
	30B	32K	33T
<b>Awning Rails</b> w/rain gutters, <b>Door</b> entrance w/separate screen door, deadbolt lock, <b>Entrance Door Steps</b> double, electric w/doorjamb switch, <b>Light</b> porch w/interior switch, <b>Mirrors</b> manual adjust w/convex, <b>Mudflaps</b> front, <b>Receptacle</b> AC duplex, <b>Sidewall Skin</b> 1-piece smooth fiberglass, <b>Storage Compartments</b> w/trunk liner	S	S	S
<b>Awning patio</b> , <b>Ladder</b> , <b>Mirrors</b> electric/remote w/defrost	0	0	0

SYSTEMS			
	30B	32K	33T
<b>HEATING &amp; A/C – Automotive Heater/Air Conditioner</b> blend air system	S	S	S
<b>Air Conditioner (Roof)</b> 14,800 BTU, ceiling-ducted w/wall thermostat, <b>Furnace</b> 30,000 BTU, low-profile, ducted, in-floor, <b>Generator</b> 4,000-watt, Cummins Onan® MicroQuiet™ gas	S		
<b>Air Conditioners (2) (Roof)</b> high-efficiency/ceiling-ducted w/wall thermostat, includes PowerLine® energy management system, <b>Furnace</b> 35,000 BTU, low-profile, ducted, in-floor, <b>Generator</b> 5,500-watt, Cummins Onan® MarquisGold™ gas		S	S
<b>ELECTRICAL – Auxiliary Start Circuit</b> , <b>Battery (Coach)</b> Group 24 deep-cycle, <b>Battery (Coach) Disconnect System</b> , <b>Dual Battery</b> charge control (automatic), <b>Electrical Distribution System</b> AC breakers, DC fuses, 45-amp. converter/charger (30B only), AC breaker panel, DC breaker panel, 45-amp. converter/charger (32K & 33T), <b>Generator Prep Kit</b> , <b>OnePlace® Systems Center</b> wall-mounted, energy management display (NA 30B), battery condition gauge, generator hourmeter gauge, generator start/stop switch, heating & A/C thermostat, holding tank levels, LP tank level, water heater lights, water heater switch, water pump switch, water tank level, <b>Power Cord</b> 30-amp.	S	S	S
<b>Battery (Coach)</b> (2) group 24 deep-cycle	0	0	0
<b>PLUMBING – Service Center</b> tank fill, city water hookup w/diverter valve, drainage valves, portable satellite dish hook-up, power cord, telephone input, <b>Tank</b> holding, heated compartment, <b>Tank LP</b> , permanent mount w/gauge, <b>TrueLevel™ Holding Tank Monitoring System</b> , <b>Water Heater</b> 6-gallon, electronic ignition, LP gas, <b>Water Pump</b> demand, <b>Water System Winterization Package</b> water heater bypass valve, siphon tube	S	S	S

SAFETY			
	30B	32K	33T
<b>Assist Bar</b> interior, <b>Bumpers</b> front & rear, <b>Child Seat Tether Anchor</b> , <b>Detectors/Alarms</b> LP leak, smoke, carbon monoxide, <b>Fire Extinguisher</b> 10 BC, <b>Ground Fault Interrupter</b> , <b>Brakelamp</b> high-mount, <b>Seat Belts</b> cab, 3-point, <b>Seat Belts</b> lap (in selected areas), <b>Slideroom Master Lock Switch</b> key activated, <b>Window</b> escape, <b>Windshield</b> laminated safety glass	S	S	S

WARRANTY <sup>7</sup>			
	30B	32K	33T
<b>12-month/15,000-mile basic warranty</b> , <sup>8</sup> <b>36-month/36,000-mile limited warranty on structure</b> , <sup>8</sup> <b>10-year limited parts &amp; labor warranty on roof skin</b> <sup>8</sup>	S	S	S

- The height of each model is measured to the top of the tallest standard feature and is based on the curb weight of a typically equipped unit. The actual height of your vehicle may vary by several inches depending on chassis or equipment variations. Please contact your dealer for further information.
  - Vista floorplans feature a wide-body design – over 96" In making your purchase decision, you should be aware that some states restrict access on some or all state roads to 96" in body width. Before making your purchase decision, you should confirm the road usage laws in the states of interest to you.
  - The load capacity of your motor home is designated by weight, not by volume, so you cannot necessarily use all available space when loading your motor home.
  - Capacities are based on measurements prior to tank installation. Slight capacity variations can result due to installation applications.
  - Capacities shown are tank manufacturer's listed water capacity (W.C.). Actual filled LP capacity is 80% of listing due to overfilling prevention device on tank.
  - Actual towing capacity is dependent on your particular loading and towing circumstances which includes the GVWR, GAWR, and GCWR as well as adequate trailer brakes. Please refer to the Operator's Manual of your vehicle for further towing information.
  - See separate chassis warranty details.
  - See your dealer for complete warranty information.
- NA Not Available  
S Standard  
O Optional

Not all items available in combination. See dealer for details.

Winnebago Industries® continuing program of product improvement makes specifications, equipment, model availability, and prices subject to change without notice. Comparisons to other motor homes are based on the most recent information available at printing.

For Sales and Service Information Contact:

©2007 Winnebago Industries, Inc.

Printed in USA

Built proudly by



winnebagoind.com / NYSE listing: WGO

Seat belts are your most important hookup. Always buckle up.

## EXTERIOR GRAPHICS



Burgundy/Gold/Green

1-year-old Winnebago fiberglass roof



1-year-old competitor's rubber roof



Vista features high-gloss fiberglass sidewalls for great looks and ease of maintenance. A fiberglass roof is also standard. It is more durable than a rubber roof, doesn't streak or "bleed" and is backed with a 10-year limited parts-and-labor roof-skin warranty.

A screenshot of the Winnebago Industries website. The browser address bar shows 'http://www.winnebagoind.com/'. The website header includes navigation links: PRODUCTS, RESOURCES, COMPANY, CLUBS/EVENTS, CONTACT, DEALERS ONLY, and a 'NEW!' badge for 'Equest &amp; Kay Features'. A sidebar on the left lists 'Popular Links' such as Winnebago RV's, Base RV's, Key Features, and Dealer Locator. The main content area features a large image of a white Vista motorhome parked on a road. Below the image are three promotional banners: 'titaniumTOUCH' with the tagline 'Refrigerators you won't find anywhere else.', 'TRUEAIR' with 'Cools 85% Faster, While 15% Quieter!', and 'SIRIUS' with 'Available Sirius Satellite Radio.'

**WINNEBAGOIND.COM** Visit us on the web for more info on all of our motor homes, the latest product updates and a host of web-exclusive content.

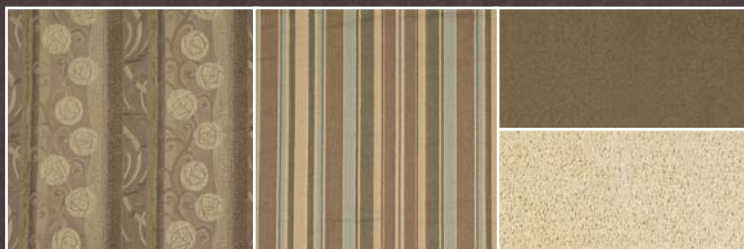
## INTERIOR DECOR

Choose from two fabric selections with Sierra Maple wood cabinets.

MAIN	BEDSPREAD	ACCENT
		CARPET



Harvest Moon



Sandpiper



Sierra Maple



**RECOGNIZED QUALITY** The Recreation Vehicle Dealer Association annually rates RV manufacturers and awards the Quality Circle award to manufacturers who provide exceptional products, service and support. Winnebago Industries is proud to be the only manufacturer to receive this award every year since its inception.



Premium Roadside Assistance

**COMMITTED TO SERVICE** We back our motor homes with the industry's best service after the sale.

- 12-month/15,000-mile basic limited warranty
- 36-month/36,000-mile warranty on structure
- Standard 10-year limited parts-and-labor roof skin warranty
- Complimentary 24-hour roadside assistance program
  - RV Technical Assistance Hotline
  - RV Service Appointment Assistance
  - Emergency Trip Interruption
  - Emergency Message Service
  - Nationwide Trip Routing
  - Fee-Free Travelers Cheques
- TripSaver Fast Track Parts. TripSaver guarantees that in-stock warranty parts ship directly to your dealer within 24 hours.
- National dealer service network

**TRIP Saver**  
FAST TRACK PARTS