

COUGAR 2009 TRAVEL TRAILERS & FIFTH WHEELS

COUGAR

WHERE LUXURY & LIGHTWEIGHT MEET
WESTERN EDITION

DSI

14th Annual RVDA DEALER
SATISFACTION INDEX

#1

in Class for
7 Straight Years





REMOVABLE DINETTE TABLES



320 SRX

COUGAR DEN

Cougar is driven by the people whose opinions we value most, our customers. We start by listening to the customer's expectations and what they identify as the keys to quality workmanship. We then incorporate the customer's expectations and desired features into the design of the RV.

The natural result of this process is innovation, fresh ideas, new technologies, unique features and better ways of creating performance, style and convenience.

Team Cougar

Sit down and relax in this Cougar Den and you may not want to leave. The Cougar Den features first of its kind All-Window slideout room with two removable dinette tables that seat up to six. Other Den features include recliner positioned near the 32" LCD HDTV (mounted on swing arm), air mattress sofa with storage below, and residential furniture with rounded edges and pillow-back feel, combined with soft indirect/direct recessed lighting.

Shown in Autumn Night décor and available on 316QBS and 320SRX.

The 276 RLS in Bayleaf boasts incredible looks and elegant style. Hardwood cabinets, day/night shades, speckled carpet and large windows make this unit one of our most popular.

SPACIOUS INTERIOR



276 RLS



32" LCD TV

LUXURY SIDE AISLE BATHS... FOR ULTIMATE PRIVACY

Three new models with enclosed side aisle baths continue to separate Cougar from our industry competitors. These private bathrooms and bedrooms were created with maximum privacy in mind. Take a look at these models and see which one fits your individual needs.

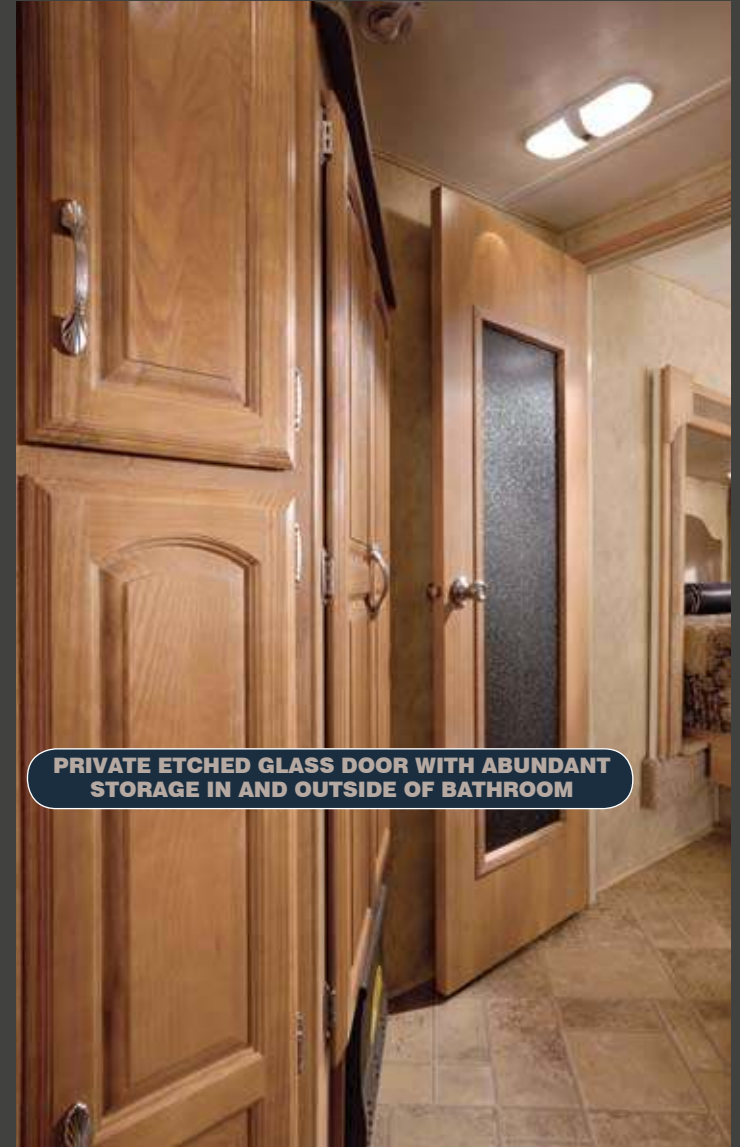
293 SAB



FULLY-ENCLOSED BATHROOM



PRIVATE ETCHED GLASS DOOR WITH ABUNDANT STORAGE IN AND OUTSIDE OF BATHROOM



BUNK HOUSES... MORE FOR YOUR MONEY

Passion plays a huge part in the success of anything you do. For 10 straight years we have taken that passion and created some of the best floorplans in the industry. This year is no different. See for yourself why Cougar bunkhouses can't be beat.



DOUBLE BED WITH BUNK ABOVE

310 SRX



NEW OVERSIZED BUNKS WITH "TRUNDLE BED"

293 SAB



NEW QUAD BUNK TRIPLE SLIDE. MORE STORAGE THAN ANYONE IN ITS CLASS

316 QBS

TAKE IT WITH YOU

Imagine putting your "toy" in an RV that feels like home. Cougar's SRX models feature unprecedented residential feel. They offer a bunk room for your kids and a place to haul your toys.

Cougar SRX offers 3 great floorplans to choose from for maximum flexibility to fit your individual needs.



LOCK-UP YOUR TOYS



60" WIDE RAMP DOOR



ADJUSTABLE RAMP LEGS



KITCHEN STORAGE IS KING



COUNTERTOP EXTENSION



DUAL POTS AND PANS DRAWER

276 RLS



COUGAR KITCHENS DAZZLE. OUR FOCUS IS FROM YOUR FEEDBACK.

Our Executive Kitchen Includes:

1. Huge Pantries - Best in Class
2. Utensil Drawer - All Models
3. Two Pots and Pans Drawers - Most Models
4. Large Counter Extension
5. Sink Covers - Create More Counter Space
6. Lazy Susan - Most Models
7. 22" Extra-Large Oven
8. Dedicated Trash Can Storage - All Fifth Wheels
9. Rich Solid Wood Cabinets - Elegant and Durable
10. Dark Counter Tops - Add Warmth and Great Looks
11. Six-Panel Residential Oak Refrigerator Front
12. Residential metal kitchen drawer glides with steel ball bearings throughout

FEATURES THAT YOU AND YOUR FAMILY WILL LOVE



Enclosed Tanks & Valves



Outside Speakers



Hitch Vision



Air Mattress Sofa With Storage



Day/Night Shades



Lp Quick-Connect



Slideout Bike Rack



Outside Ent. Center Hookup (Fw)



Entrance Handle



Snap Jacks (Fw)



AM/FM, CD-DVD player with iPod/MP3 port



Command Center



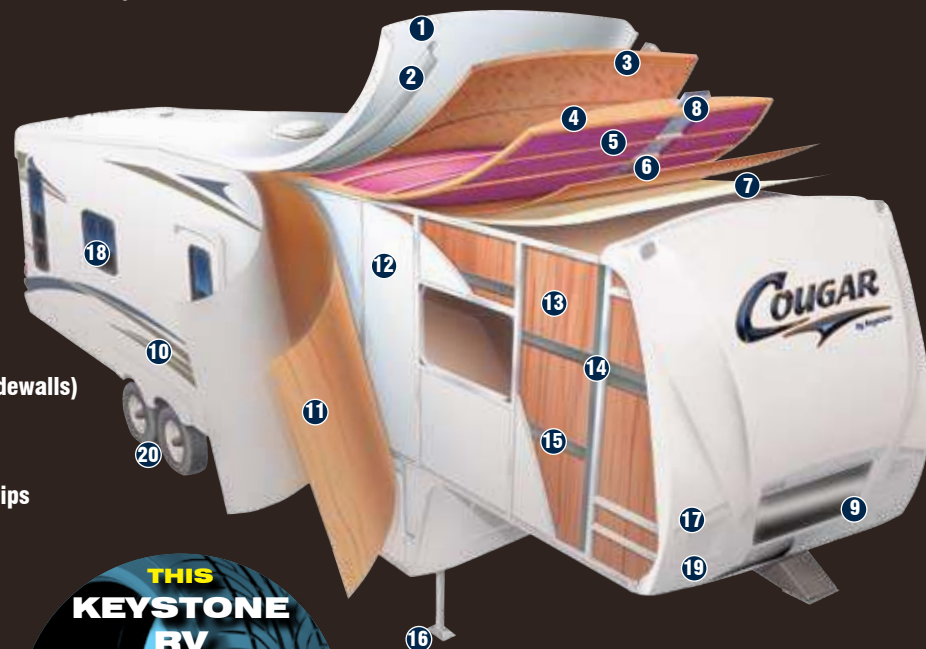
Black Tank Flush



LCD TV

(5-SIDED ALUMINUM SUPER STRUCTURE)

- ① One-piece EPDM rubber roof membrane with 12 year warranty
- ② Radius roof transition molding
- ③ 3/8" roof decking
- ④ 5" fabricated rafters on 16" centers
- ⑤ Fiberglass insulation
- ⑥ Ceiling decking luan backer
- ⑦ Vinyl ceiling panel
- ⑧ Triple insulated, foam-core air conditioning duct
- ⑨ Hitch Vision (Patent Pending)
- ⑩ Gel-coated filon fiberglass
- ⑪ 1/8" luan board
- ⑫ Solid block insulating foam (R-14, Roof - R-9, Sidewalls)
- ⑬ Interior decorator board
- ⑭ 2" welded aluminum wall studs
- ⑮ Electro-galvanized sheet (EGS) metal backing strips
- ⑯ Easy access adjustable snap jack pins
- ⑰ Increased turning radius
- ⑱ Tinted safety glass windows
- ⑲ Docking lights
- ⑳ Ultra-lube axles



FLOOR (R-14)

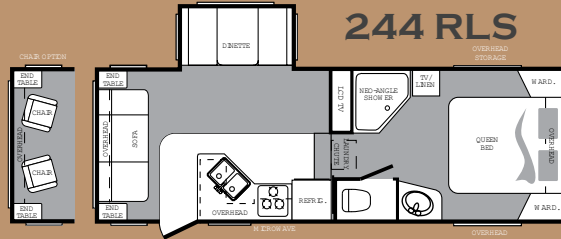
- ① 8" and 10" steel "rolled" I-beam
- ② 3" welded aluminum floor
- ③ 3" large-capacity heat duct
- ④ 1/4" ABS enclosed underbelly
- ⑤ Welded steel cross members
- ⑥ Full radius wrap aluminum enclosure
- ⑦ Moisture barrier
- ⑧ Fiberglass insulation
- ⑨ 5/8" seamless floor decking
- ⑩ Residential-grade carpeting with stain protectant
- ⑪ 2" heat duct from furnace into underbelly
- ⑫ Heated, enclosed water lines

FIFTH WHEELS

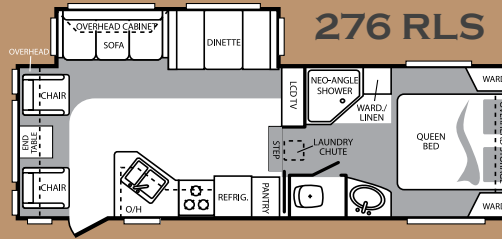
7 YEARS IN A ROW, NORTH AMERICA'S TOP SELLING LIGHTWEIGHT LUXURY FIFTH WHEEL

**1/2 TON
SERIES**

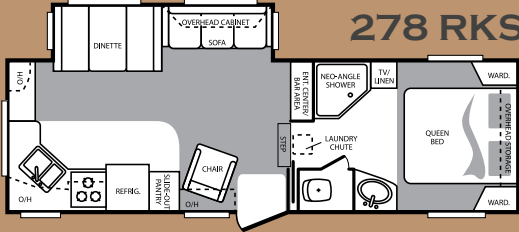
244 RLS



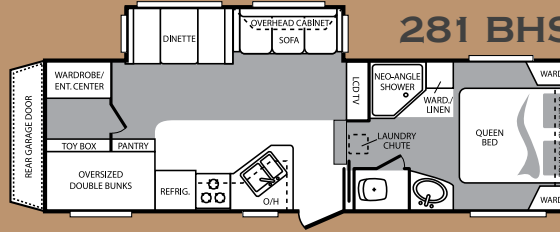
276 RLS



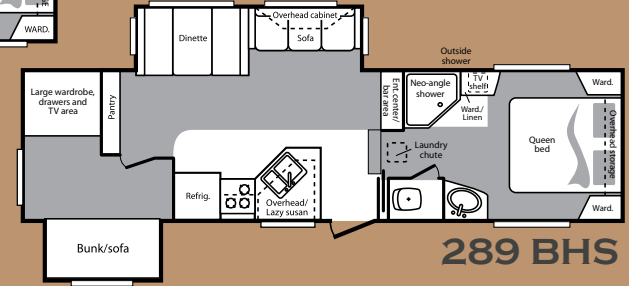
278 RKS



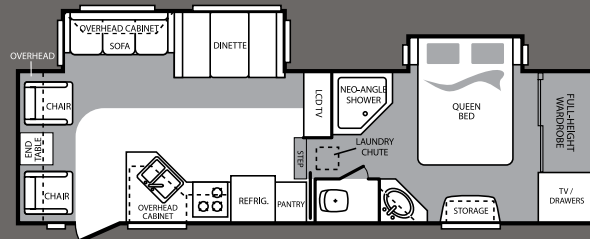
281 BHS



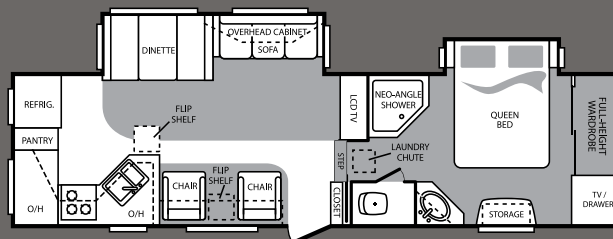
289 BHS



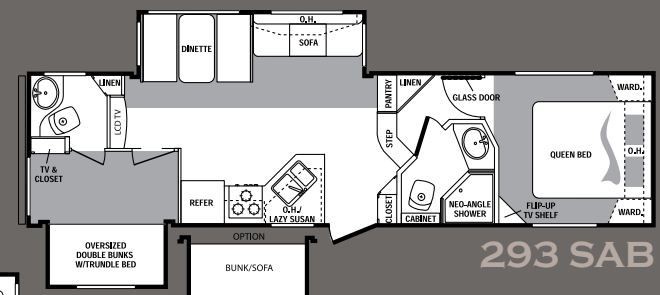
291 RLS



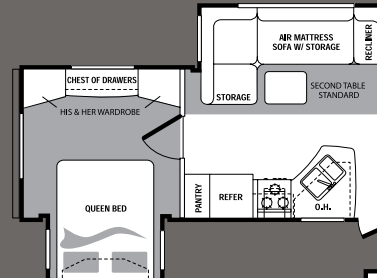
292 RKS



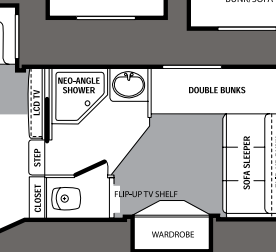
293 SAB



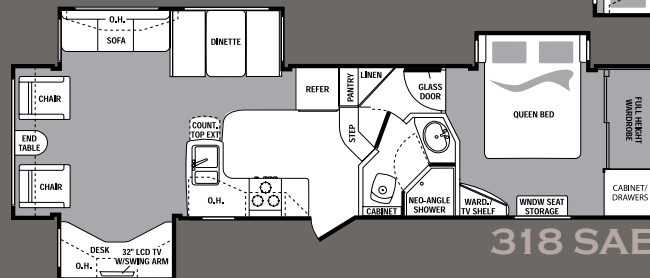
310 SRX



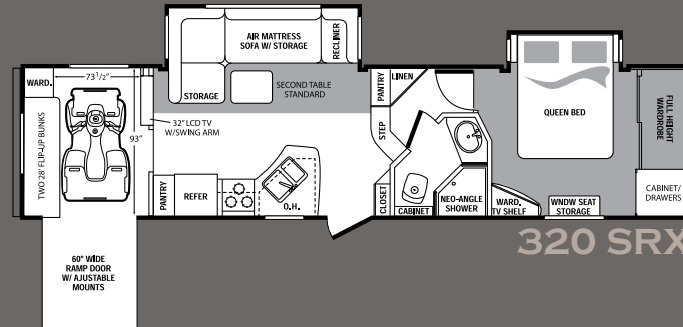
316 QBS



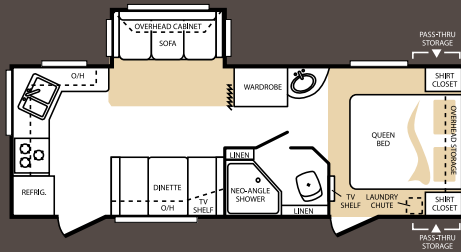
318 SAB



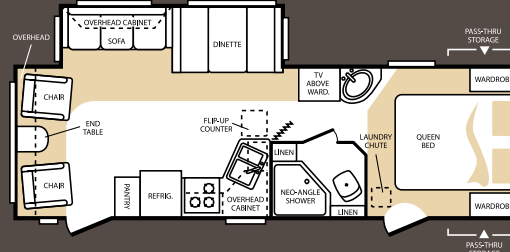
320 SRX



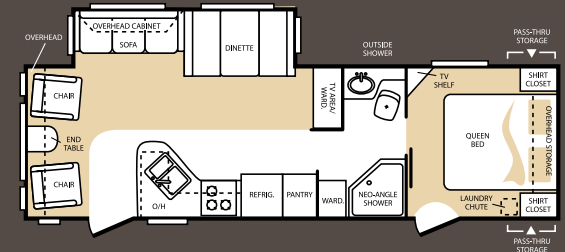
TRAVEL TRAILERS



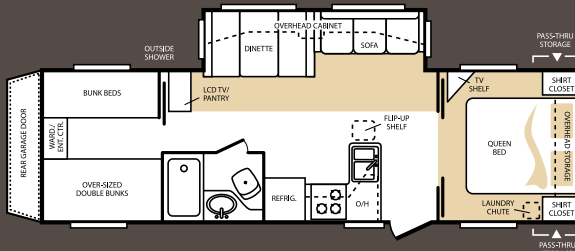
243 RKS



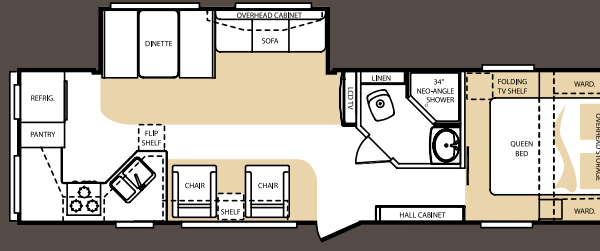
268 RLS



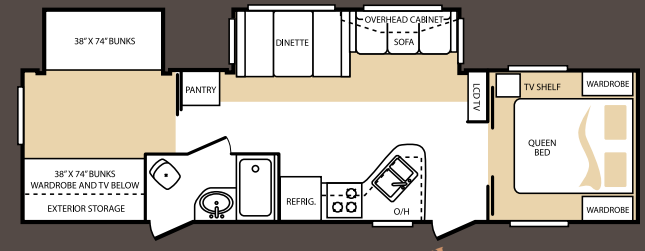
294 RLS



301 BHS



303 RKS



NEW! 307 BHS

PLEASE CHECK OUT OUR XLITE BROCHURE FOR MORE COUGAR TRAVEL TRAILER FLOOR PLANS OR VISIT OUR WEB SITE AT WWW.KEYSTONE-XLITE.COM

FIFTH WHEELS

TRAVEL TRAILERS

Model	244RLS	276RLS	278RKS	281BHS	289BHS	291RLS	292RKS	293SAB	310SRX	316QBS	318SAB	320SRX	243RKS	268RLS	294RLS	301BHS	303RKS	307BHS
Shipping Weight	6630	7300	7000	8020	8585	8175	8580	8730	8270	9055	8950	9215	6030	6780	6890	7235	7180	7620
Carrying Capacity	3390	2860	2940	2345	1735	2060	3220	2775	3560	2495	2820	2905	3335	2620	2650	2485	2200	3380
Hitch	1220	1360	1140	1565	1520	1435	1640	1345	1670	1390	1610	1960	535	520	660	850	580	840
Length	26'9"	28'9"	29'8"	32'7"	32'7"	30'10"	33'	33'5"	35'4"	34'2"	34'7"	35'3"	27'3"	29'10"	31'4"	34'4"	34'4"	35'8"
Height	11'8"	11'8"	11'8"	12'	12'	11'11"	12'	12'	12'	12'	12'	12'	11'1"	11'1"	11'1"	11'2"	11'2"	TBD
Fresh Water	60	60	60	60	60	60	60	60	60	60	60	60	60	60	60	60	60	60
Waste Water	38	38	38	38	38	38	38	38	38	38	38	38	38	38	38	38	38	38
Gray Water	76	76	76	76	76	76	76	76	76	76	76	76	76	76	76	76	76	TBD

COUGAR STANDARDS

- 5-sided aluminum construction
- Residential porcelain toilet with foot pedal
- Ultra lube hubs on axles (all models)
- Snap jack pins (all Fifth Wheels)
- All Fifth Wheel models under 12' exterior height (fit under your 12' door)
- 30,000 BTU furnace
- One-piece seamless rubber roof
- All windows in main slideout open

"CAMPING IN STYLE" PACKAGE

- Day and Night Shades
- Laundry chute
- Black trim safety glass windows (tinted to keep the sun out)
- Microwave oven with turn style
- A & E awning
- Aluminum framed sidewalls, floor, front and rear walls
- 13,500 BTU air conditioner
- Raised-panel cabinet doors

VALUE PACKAGE

- True home CD/DVD system with speakers and separate zones (12-Volt compatible); MP3 player hookup on stereo
- Gas/electric water heater with quick recovery
- Residential tiled shower/tub surround
- TV antenna
- Cable hook-up
- Gel coated filon fiberglass
- Full walk-on roof
- Fiberglass walls
- Rear stabilizer jacks

SAFETY MUST-HAVES

- Manual backup on all main slideouts
- T-mold bulb seals on all slideouts to keep slider sweeps on your slideout (stays on in hot weather)
- LP sensor
- Smoke detector
- Fire extinguisher
- Carbon monoxide detector

DRY CAMPING FEATURES

- 12 Volt stereo/I-pod compatible
- Large fresh, grey & black tanks on all models
- All slide-out lights are 12 Volt
- Space for dual batteries

- Under 12' exterior height (on most models) to stay clear of low hanging limbs
- Entire underbelly enclosed to keep debris off tanks, water lines, etc.

COUGAR OPTIONS

- 19" LCD TV (243, 268 and 301 only)
- 32" LCD TV (all other models)
- Outside speakers*
- Black tank flush*
- Entertainment storage hook-up (Fifth Wheels only*)
- Outside LP quick connect*
- Radial tires*
- Polar Package*
- Slide in/out bike storage rack (except 300/310/320SRX)
- Air mattress sofa with storage
- Super sofa with air mattress and recliner (316 and 320 only)
- Swivel rocker (244, 276, 291, 292, 318)
- Second swivel rocker
- Free standing dinette

*Mandatory Option

CONVENIENCE PACKAGE TRAVEL TRAILERS

- Outside shower*
- Residential refrigerator front*
- Spare tire*
- Front diamond plate*

*Mandatory Option

CONVENIENCE PACKAGE FIFTH WHEELS

- Outside shower
- Residential refrigerator front
- 16" spare tire
- Shock Absorbers**
- Large refrigerator**
- 15,000 BTU air conditioner**

** Mandatory Option 291,292,316,318,320 only

DECOR OPTIONS



AUTUMN NIGHT



BAYLEAF



DESERT SUNSET



2642 Hackberry Drive, Goshen, Indiana 46526 • 574-535-2100

Product information is as accurate as possible as of the date of publication of this brochure. Features, floor plans, and specifications are subject to change without notice. Please also consult Keystone's web site at keystonerv.com for more current product information and specifications. Tow Vehicle Disclaimer: CAUTION: Owners of Keystone recreational vehicles are solely responsible for the selection and proper use of tow vehicles. All customers should consult with a motor vehicle manufacturer or their dealer concerning the purchase and use of suitable tow vehicles for Keystone products. Keystone disclaims any liability or damages suffered as a result of the selection, operation, use or misuse of a tow vehicle. KEYSTONE'S LIMITED WARRANTY DOES NOT COVER DAMAGE TO THE RECREATIONAL VEHICLE OR THE TOW VEHICLE AS A RESULT OF THE SELECTION, OPERATION, USE OR MISUSE OF THE TOW VEHICLE. January 2008



DARE TO COMPARE

- #1 selling fifth wheel in its class (7 years in a row)
- Highest trade-in and resale value in the industry on average
- Hitch Vision (patent pending) front cap with docking lights
- Exclusive factory installed bike/storage rack on most Fifth Wheel's and Travel Trailer's
- Fully enclosed, underbelly with heated and enclosed dump valves
- 16.2 gallons per hour – quick recovery water heater (great for bunkhouses)
- Oversized pass-thru storage doors on both sides of each coach (with divider from front battery compartment)

- Slideout seal is mounted in a "T" track (no sticky tape to hold slide seals on)
- Cougar – Executive Chef Kitchen
- Easy access laundry chute (all models)
- Porcelain - foot flush toilets
- Solid lambrequin leg window treatments with Day and Night Shades standard on all models
- Extra large picture window at all dinettes, slide-out windows open for cross ventilation
- Five side welded aluminum super structure
- R9 sidewall insulation, R14 floor and ceiling insulation and R15 astrofoil in the slideout
- Fully ducted air conditioning featuring triple insulated, foil wrapped, light weight ducts
- 12 Volt compatible for dry camping