

Let your inquisitive side  
lead the way.

*Pursuit*<sup>®</sup> 2006



"the motorhome people"<sup>®</sup>

# Pursuit® Features

## Exterior

- Standard**
- Radial Spare Tire
  - Big Foot Leveling Jacks
  - Trunk Lights
  - Patio Light by Entry Door
  - Mud Flaps—Front & Rear
  - Double Electric Step at Entry Door
  - Dual Deep Cycle Auxiliary Battery System
  - Battery System Emergency Start
  - Single Water Fill w/ Change-Over Valve
  - Exterior Shower w/ Hot & Cold (Sewer Comp.)
  - Heated/Enclosed Holding Tank Comp.
  - Battery Disconnect
  - Electric Supply Cord 30 Amp.
  - 60 Amp. Converter
  - Awning Rails w/ Gutter
  - Slide Room Awning
  - Side Mount Exterior Mirrors—  
Heated & Remote
  - Delay Wiper Switch
  - 20' Sewer Hose
  - Black Tank Rinse System
  - Automotive Underbody Undercoating
  - Pneumatic Water Line Winterizing Fitting
  - Gas Struts—Exterior Compartment Doors
- Optional**
- Dark Silver Exterior Paint
  - Driving Lights
  - Stainless Steel Simulators

- Trailer Hitch
- Electric Supply Cord 50 Amp.
- Rear Ladder
- Main Awning
- Thermopane Windows
- Locking Gas Fill Door
- Driver Door & Slider Window
- Transit Front Cap Cover

## Interior

- Standard**
- Welbeck Birch Cabinetry
  - Linoleum Tile Floor—Kitchen & Bath
  - Booth Dinette
  - Doors in Dinette Base
  - Hardwood Cabinet Doors
  - Monitor System
  - Skylight in Bath
  - Handrail at Entry Door
  - Mini Blinds—Living Room & Bedroom
  - Standard Mattress
  - Bedspring
  - Plastic Sink Cover
- Optional**
- Free-Standing Dinette w/ 2 Free-Standing &  
2 Extra Folding Chairs (3480 DS & 3500 DS)
  - Fantastic Fan with Rain Sensor
  - Day/Night Shades—Living Room & Bedroom
  - Day/Night Shades—Living Room Only
  - Upgraded Mattress
  - Range Cover—Bifold

## Comfort & Convenience

- Standard**
- Marine-Type Toilet
  - Bath Light Switch
  - Power Bath Vent
  - Shower Door

## Driver's Accessories

- Standard**
- Swivel/Reclining Driver & Passenger Seats
  - Windshield Privacy Drapes on Track
  - Daytime Running Lights
  - ABS Drink Tray
  - 12V Power Outlet at Dash

- Optional**
- Defroster Assist Fans w/ Dash Switch

## Appliances

- Standard**
- Pre-Wire for Roof A/C
  - Generator Ready
  - Ducted Roof
  - 31,000 BTU Furnace (2970 DS, 3190 DS)
  - (2) 25,000 BTU Furnace (3500 DS)
  - 40,000 BTU Furnace (3480 DS)
  - 3-Burner Cooktop
  - 1.0 Cu. Ft. Microwave Built In
  - Double-Door Refrigerator
  - Water Heater Bypass
  - Water Heater (6 Gal.) w/ Electric Ignition

## Optional

- 4,000 Watt Onan® Micro-Quiet & 13,500 BTU  
Roof A/C (2970 DS, 3190 DS)
- 4,000 Watt Onan® Micro-Quiet & 15,000 BTU  
Roof A/C (2970 DS, 3190 DS)
- 5,500 Watt Onan® Marquis Gold & 13,500 &  
11,000 BTU Roof A/C
- 7,000 Watt Onan® Marquis Gold &  
(2) 13,500 BTU Roof A/Cs
- Heat Strip w/ Roof A/C
- Low-Profile Roof A/C
- 3-Burner Range w/ Oven (17")
- 1.0 Cu. Ft. Half Time® Microwave Built In
- Large Double-Door Refrigerator
- Water Filter System
- Gas/Electric Water Heater

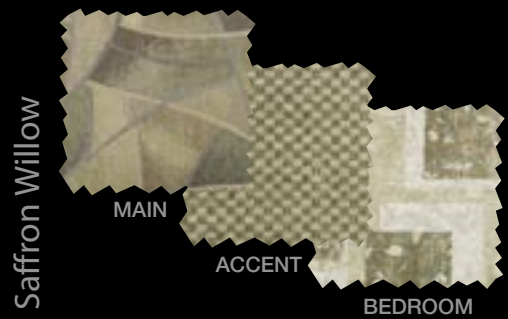
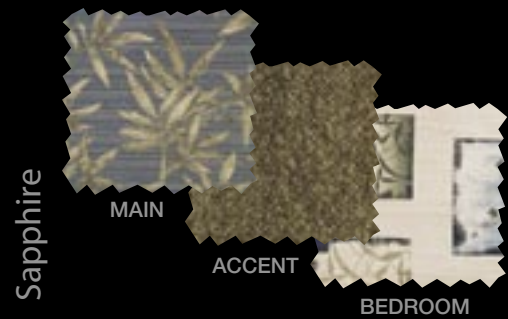
## Audio/Visual

- Standard**
- 4 Radio Speakers
  - AM/FM Stereo CD
  - 27" Flat-Screen TV—Living Room
  - TV Antenna w/ Booster
  - Cable TV & Phone Jacks
  - Rear Camera Cable
  - Pre-Wire for Satellite Dish

## Optional

- CB Antenna (Only)
- 20" Flat-Screen TV—Bedroom (120 V)
- VCR/DVD Combo
- TV Distribution Panel
- Remote Rear Camera w/ Monitor

# Fabrics

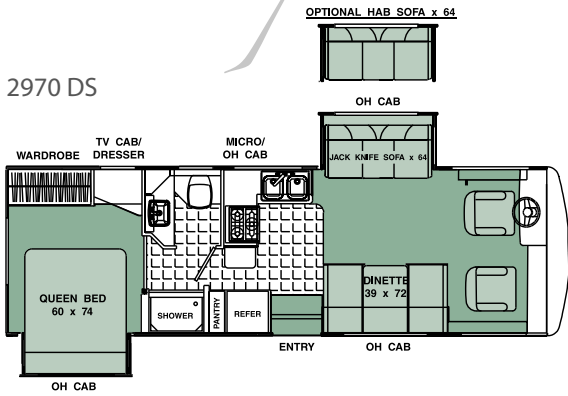


# Wood

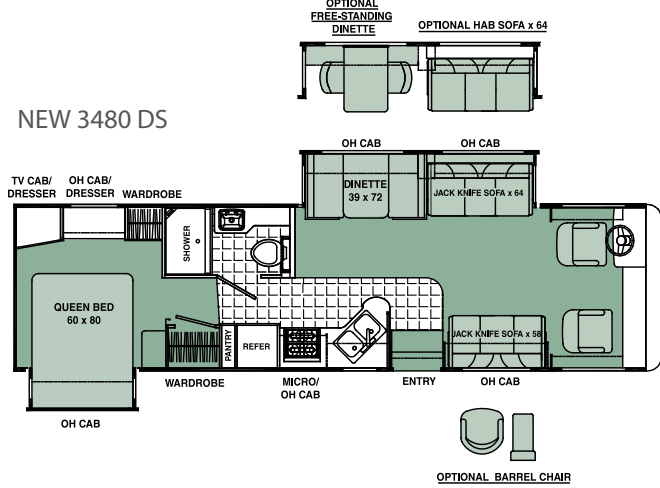


Pursuit®  
Floor plans

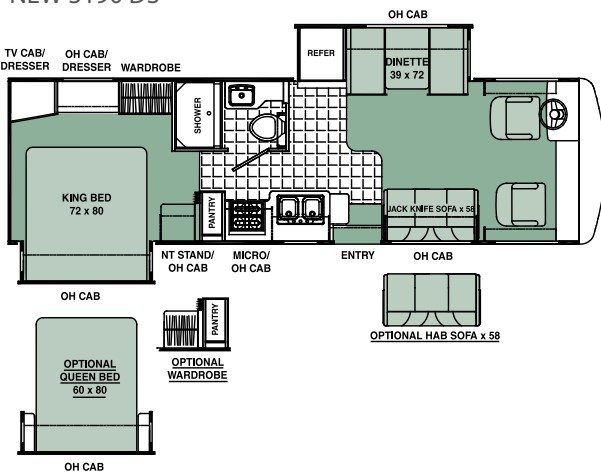
2970 DS



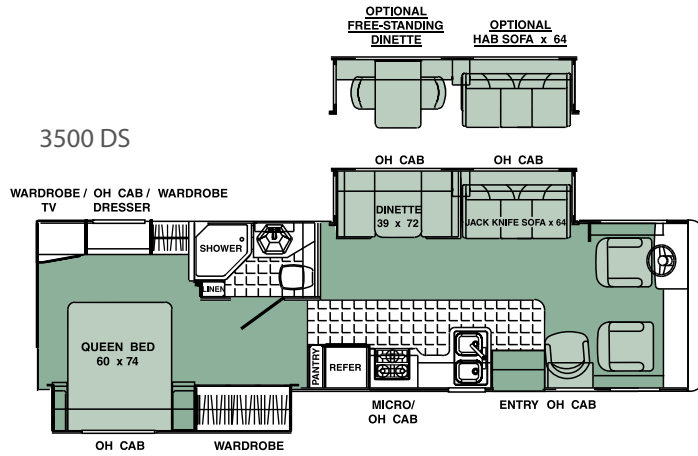
NEW 3480 DS



NEW 3190 DS



3500 DS



## Exterior Graphics



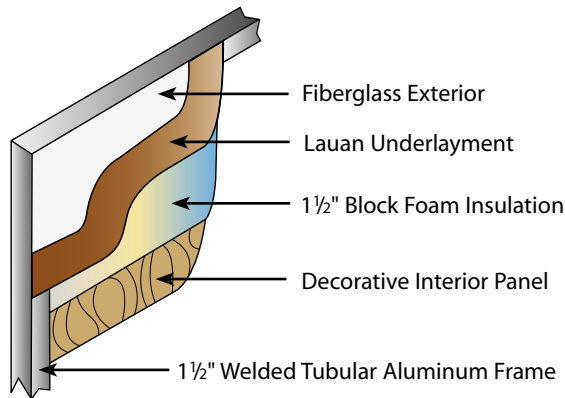
Standard

Optional Dark Silver Paint  
(featured on cover)

# Specifications

	2970 DS	3190 DS	3480 DS	3500 DS
Chassis	Ford	Ford	Ford	Ford
Chassis Model	F-53	F-53	F-53	F-53
Engine Size (liter)	6.8	6.8	6.8	6.8
Wheel Base	190"	208"	228"	228"
Tire Size	225/70R 19.5	225/70R 19.5	245/70R 19.5	245/70R 19.5
GVWR (lbs.)	18,000	18,000	20,500	20,500
UVW (lbs.)	15,000	16,000	17,100	16,950
GAWR Front (lbs.)	7,000	7,000	7,500	7,500
GAWR Rear (lbs.)	11,000	11,000	13,500	13,500
GCWR (lbs.)	26,000	26,000	26,000	26,000
Exterior Length	29' 9"	31' 10"	34' 9"	34' 9"
Exterior Clearance Height*	11' 9"	11' 9"	11' 9"	11' 9"
Exterior Width	8' 4"	8' 4"	8' 4"	8' 4"
Interior Width	7' 11 1/4"	7' 11 1/4"	7' 11 1/4"	7' 11 1/4"
Interior Height	6' 7"	6' 7"	6' 7"	6' 7"
Sleeping Capacity	5	5	6	5
Fuel Capacity (gal.)	75	75	75	75
Fresh Water Capacity (gal.)	58	70	70	75
Waste Water Capacity (gal.)	45	44	50	45
Grey Water Capacity (gal.)	45	45	51	60
Water Heater Capacity (gal.)	6	6	6	6
LP Gas Capacity (lbs.)	65	85	100	100
Furnace Rating (x 1,000) BTU	31	31	40	(2) 25
Awning Size (ft.)	13	14	16	14

## Sidewall Construction



### GVWR (Gross Vehicle Weight Rating):

The maximum permissible weight of the unit, including the UVW plus all fluids, cargo, optional equipment and accessories. For safety and product performance, do not exceed GVWR.

### UVW (Unloaded Vehicle Weight):

Means the weight of a motorhome as manufactured at the factory with fuel, engine oil and coolants. The above UVWs represent a motorhome with typical options. UVW will vary significantly based on option selection.

### GAWR (Gross Axle Weight Rating):

The total weight each front/rear axle, suspension and tire system is designed to carry. When loading the unit, care should be taken to balance cargo weight in consideration of the GAWRs.

### GCWR (Gross Combined Weight Rating):

The maximum total weight of the loaded unit plus a tow vehicle. This includes the weight of both the unit and tow vehicle, fuel for each, all other fluids, cargo, occupants, optional equipment and accessories.

\* Includes clearance for air conditioner and satellite dish.

**IMPORTANT NOTE:** All capacities are approximate and all dimensions are nominal. Georgie Boy motorhomes are designed to allow for a wide variety of uses, extended trips with two people or short trips with multiple people. Accordingly, each unit allows ample room for sleeping, seating, fluids and cargo. While the customer is the beneficiary of this design, the customer also bears the responsibility to select the proper combination of passengers, cargo, load and tow vehicle without exceeding the chassis weight capabilities. Consumers may need additional braking capacity to tow loads greater than 1,000 pounds. Seat belts should always be worn for passenger safety. Seat belts are provided at most locations to allow convenience in selecting which seat to occupy. However, it is not intended that all seating positions equipped with a seat belt may be occupied while the vehicle is in motion, without regard to other weight factors. All Georgie Boy motorhomes are designed to ensure that the number of passengers allowed while the vehicle is in motion will always at least equal the stated sleeping capacity. Though extra seat belts may be provided, for your safety and the proper operation of your vehicle, limit your passengers to the number allowed by the Net Carrying Capacity of your vehicle.

We hope that you find this comprehensive, factual catalog helpful. All information contained in this brochure is believed to be accurate at the time of publication. However, during the model year, it may be necessary to make revisions and Georgie Boy reserves the right to make all such changes without notice, including changes in prices, colors, materials, equipment and specifications, as well as the addition of new models and the discontinuance of models shown in this brochure. Also, some equipment shown or described is optional and available at extra cost. Therefore, please consult with your Georgie Boy dealer to confirm the existence of any materials, design or specifications that are material to your purchase decision.

Georgie Boy Mfg., LLC • 21888 Beck Drive • Elkhart, IN 46516 • Phone (574) 295-7344  
 Fax (574) 389-0823 • Sales (877) 876-9024 • Service (800) 521-8733  
 Web Site: [www.georgieboy.com](http://www.georgieboy.com) • Owners Club: [www.georgieboyrvclub.com](http://www.georgieboyrvclub.com)

Your Dealer: