

2008 Class A Luxury Motorhomes

It's About Livin'



TOUR MASTER





Brian Shea, Founder

I ADMIT — I DIDN'T DESIGN THIS WONDERFUL MOTORHOME — YOU DID!

DURING MY THIRTY YEARS IN THE MANUFACTURED HOUSING AND RV INDUSTRY, I'VE LEARNED THAT THE SMARTEST PEOPLE IN THE BUSINESS ARE NOT THE FOLKS IN THE ENGINEERING, SALES OR PRODUCTION DEPARTMENTS. IT IS YOU, OUR CUSTOMERS, WHO USE OUR PRODUCTS.

MY PHILOSOPHY IS THAT OUR PRODUCTS SHOULD REFLECT WHAT YOU THE CUSTOMER TELLS US IS IMPORTANT. MOST MANUFACTURERS DEVELOP PRODUCTS IN HOPES THAT THE CUSTOMER WILL APPROVE THE FLOORPLAN FEATURES AND DESIGN WITHOUT CONSULTING THE END USER. THE TOUR MASTER IS THE EXACT OPPOSITE. WE HAVE TAKEN ALL THE GREAT CUSTOMER INPUT WHILE AT CAMPGROUNDS ACROSS THE COUNTRY AND PUT IT ALL TOGETHER IN THIS MAGNIFICENT PRODUCT.

I UNDERSTAND PURCHASING AN RV CAN BE A STRESSFUL EVENT. MANY MANUFACTURERS OFFER TOO MANY DIFFERENT CHOICES. SELECTING FLOORPLAN ARRANGEMENTS, OPTIONS AND AMENITIES CAN OFTEN CAUSE UNDUE STRESS AT THE DEALERSHIP AND ULTIMATELY A MORE EXPENSIVE COACH. WE HAVE TAKEN THE TIME IN THE DESIGN PROCESS TO MAKE THE TOUR MASTER AN ALL-IN-ONE PACKAGE. BY SIMPLIFYING THE BUYING PROCESS WE TAKE THE GUESS WORK AND STRESS OUT OF PURCHASING YOUR NEW TOUR MASTER SO THAT YOU CAN GET OUT ON THE ROAD AND ENJOY LIVIN'.

I'M SURE YOU WILL LOVE WHAT WE'VE DONE WITH YOUR INPUT. IN THE TOUR MASTER LINEUP WE OFFER FULL BODY PAINT OPTIONS VIRTUALLY AT THE SAME PRICE AS COMPETITORS NON-PAINTED UNITS. OTHER MANUFACTURERS TRY TO DOWN PLAY THE IMPORTANCE OF A BEAUTIFUL EXTERIOR PAINT JOB. NOT ONLY DOES A SLEEK EXTERIOR INSTILL A SENSE OF PRIDE IN THE OWNERS BUT IT INCREASES THE RESALE VALUE AS WELL. WE WERE ABLE TO INCREASE THE CEILING HEIGHT TO A FULL SEVEN AND A HALF FEET WITHOUT INCREASING THE OVERALL HEIGHT OF THE UNIT. MORE HEADROOM, DEEPER AND TALLER SLIDE ROOM THAN EVER OFFERED BEFORE AND OPENNESS THAT NO OTHER MOTORHOME CAN DELIVER. WE OFFER SEAMLESS FIBERGLASS ROOFS, REAL HARDWOOD CABINERY, A SOLID STEEL TRUSS FOUNDATION, LAMINATED SIDEWALLS, LCD TELEVISIONS WITH 5.1 HOME THEATER SOUND, GPS AND MUCH MORE.

I COULD GO ON AND ON BUT I'LL LET YOU SEE FOR YOURSELF WHAT AN EXCEPTIONAL VALUE THIS MOTORHOME IS. I WANT TO THANK YOU AND ALL OF THOSE WHOSE INPUT MADE TOUR MASTER A REALITY. THE COMBINATION OF YOUR ADVICE, OUR DESIGN SKILLS, ADVANCED MANUFACTURING TECHNIQUES AND SIX SIGMA QUALITY INITIATIVES WE PRESENT TO YOU ONE OF THE RV INDUSTRIES' LEGACY BRANDS IN THE TRUE TRADITION OF TOUR MASTER.

HIGH QUALITY, HIGH VALUE AND AN ABUNDANCE OF UNIQUE FEATURES AT A GREAT PRICE.

Brian Shea



It's About Livin'

TOUR MASTER OFFERS MORE STANDARD FEATURES THAN ANY OTHER LUXURY DIESEL MOTORHOME, LEAVING YOU WITH A FEW SIMPLE CHOICES.

- 1. PICK YOUR FLOORPLAN**
- 2. PICK YOUR PACKAGE**
- 3. PICK YOUR DAY TO START LIVIN'**



KEYLESS ENTRY

ARE YOU READY TO START LIVIN'?
BEGIN YOUR TOUR WITH THE SIMPLE TOUCH OF A
BUTTON.

Welcome Home...

TOUR MASTER

DESIGNED WITH LIVIN' IN MIND.

- 7'-6" INTERIOR CEILING HEIGHT
- 42" DEEP 6'-4" TALL SLIDEROOM
- 180° PANORAMIC VIEW WINDOWS
- 1 YEAR 12,000 MI. WARRANTY
- 3 YEAR 36,000 MI. LIMITED STRUCTURAL WARRANTY
- HARDWOOD CABINETRY THROUGHOUT
- ROCK SOLID CONSTRUCTION PRACTICE

Optional Paint



Titanium Sand



Blue Fusion



Sonoma Red



Tungsten Silver



Large overhead attic storage and solid hardwood maple cabinets make this living room the very best in it's class. The largest slide room in the industry gives you the feeling of home. The panoramic style windows will allow you to enjoy many of your destination while inside.

It's About Value



ELEGANT LIGHTING

PURPOSEFUL LIGHTING FOR EVERY TASK WITH INDIVIDUAL SWITCHES TO LET YOU CONTROL THE AMBIANCE



HARDWOOD

QUALITY LOOKS BEGIN WITH QUALITY MATERIALS. HAND SELECTED HARDWOOD IS USED THROUGHOUT THE TOUR MASTER



EUROPEAN STYLE

FLUTED AND RADIUS FACIA, RADIUS OVERHEAD STORAGE COMPARTMENTS ENHANCE THE MODERN DESIGN OF THE TOUR MASTER'S INTERIOR



ELEGANCE

HARDWOOD TABLE AND CHAIRS IS A GREAT ALTERNATIVE TO THE STATIONARY DINETTE. EXPANSIVE WINDOWS GIVES YOU A GREAT VIEW.



DEEP AND WIDE

AT 42 INCHES DEEP, 6 FOOT 4 INCHES TALL, AND 12 FEET WIDE MAKES THIS ONE OF THE LARGEST SLIDES ON THE MARKET



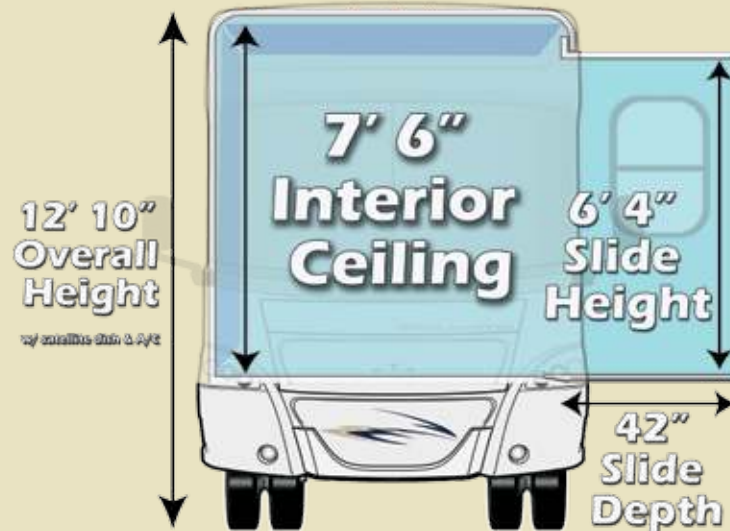
PRODUCTIVITY

CENTRALLY LOCATED COMPUTER WORKSTATION ALLOWS YOU TO TAKE CARE OF BUSINESS IN THE COMFORT OF THE LIVING ROOM



It's About Dimension & Features

THE TALL CEILINGS IN THE TOURMASTER ALLOW FOR TALLER SLIDES THAN EVER BEFORE. THIS TALLER SLIDE HEIGHT IS COMPLEMENTED BY DEEPER SLIDES EXTENDING A FULL 42 INCHES.

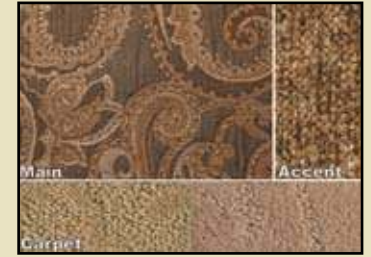


FULLER SOUND
 SURROUND SOUND SYSTEM
 MEANS YOU'LL WATCH TV WITH
 THE FULL EXPERIENCE OF SOUND

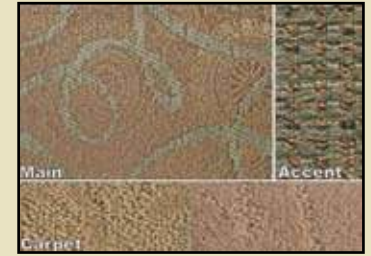
EZ GLIDE
 STORAGE MADE EASY WITH
 A 400 POUND SLIDING TRAY
 MAKING HEAVY ITEMS EASY ON
 THE BACK (OPTIONAL)



STAY COOL
 EXTERIOR FREEZER/COOLER
 GIVES YOU CONVENIENCE FOR
 PATIO LIVING AND SLIDES
 OUT FOR YOUR CONVENIENCE
 (OPTIONAL)



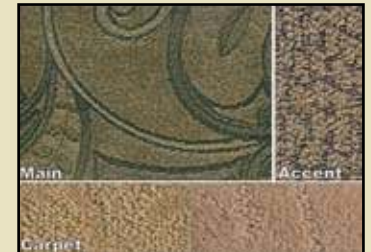
Chocolate



Topaz



Santa Fe



Midnight



Panama Joe

ONE LARGER SLIDE
 ELIMINATES THE NEED
 FOR A SECOND SLIDE
 LEAVING AN UNOBSTRUCTED
 PASSENGER SIDE EXTERIOR
 UNDER THE AWNING.

It's About Entertainment



STYLISH ENTERTAINMENT

Entertainment has a whole new meaning! Gulf Stream provides you with an easy to use entertainment center offering an optional 32" LCD TV, and with a Euro Recliner to make movie night easy and relaxing.

BE PART OF AN EPIC BATTLE SCENE OR SIT IN THE FRONT ROW AT A SYMPHONY WITH 5.1 MASTER-SOUND SURROUND SPEAKERS, BRILLIANT 30" WIDE SCREEN LCD TV, AND AN EASY TO USE HOME THEATER SYSTEM. NOW YOU HAVE THE OPTION TO DOUBLE IT. ADD ANOTHER SURROUND SOUND SYSTEM TO THE BEDROOM.



ABUNDANT

COMPACT COMPONENTS ALLOW ROOM FOR MORE MEDIA THAN EVER BEFORE AVAILABLE



BRILLIANT

LCD TV PRODUCES INCREDIBLE PICTURE QUALITY IN AN UNBELIEVABLY SMALL SPACE



RESONANCE

POWERFUL STEREO SYSTEM MAKES SOUND COME ALIVE



It's About Ergonomics & Control

COMFORTABLE SEATING, LARGE DIALS AND GAUGES, EVERY CONTROL JUST A TOUCH AWAY, PANORAMIC VISIBILITY, AND STYLISH ANGLES PUT YOU IN COMMAND OF YOUR ONE OF A KIND DIESEL MOTORHOME.

SAFETY IS AT YOUR FINGERTIPS.



ONE TOUCH
LARGE EASY TO READ AND REACH
BUTTONS MAKE OPERATION SIMPLE.

AMBIANCE
ENJOY ALL YOUR FAVORITE MUSIC ON
AND OFF THE ROAD.



SAFETY

FULL FEATURED DASH MOUNTED COLOR
BACKUP MONITOR WITH AUDIO AND SIDE
MOUNTED CAMERAS.

ITS LIKE HAVING EYES IN THE BACK OF
YOUR HEAD.



PROTECTION

THE FULL BANK OF BREAKERS AND
FUSES FOR INTERIOR COMPONENTS
ARE CENTRALIZED FOR QUICK
REPLACEMENT



PANORAMA

UNOBSTRUCTED VIEW OF THE ROAD AHEAD AND SCENERY AS YOU TRAVEL



CONTROL PANELS AND SWITCH BANKS ARE PLACED IN A
CENTRALIZED AREA. NO MORE RUNNING FROM SWITCH TO
SWITCH WHEN YOUR READY TO LEAVE OR WISH TO KNOW
THE STATUS OF YOUR WATER, WASTEWATER, LP OR BATTERY
POWER LEVELS.

It's About Cooking



CAPACITY

CONVECTION MICROWAVE 3 BURNER STOVETOP AND OVEN TO PREPARE A FEAST



MAXIMIZED STORAGE

4 SUPERSIZED HEAVY DUTY DRAWERS AND HARDWARE CONCEALED BY A SINGLE DOOR, SLIDING TRAY MAKES REACHING ITEMS IN THE BACK A BREEZE



CLEANLINESS

CONTROL THE MESS. ACCESS BUILT INTO THE COUNTERTOP WITH OUTSIDE ACCESS FOR TRASH AND RECYCLING BINS



RESIDENTIAL

CORIAN™ COUNTERTOPS WITH MOLDED SINK AND DELUXE GOOSENECK SPRAYER

It's About Relaxation

YOUR MASTER SUITE IS YOUR PLACE TO RETREAT. QUEEN AND KING SIZE BEDS AND PERSONAL READING LIGHTS PROVIDE THE PERFECT PLACE TO RELAX WITH A GOOD BOOK OR FLIP ON THE LCD TV AND ON WITH THE SHOW IN THE MASTER SUITE THEATER. CEDAR CLOSETS, OVERHEAD CABINETS AND NIGHT STAND STORAGE PROVIDE PLENTIFUL STORAGE.



OPEN

MASTER SUITE PICTURE WINDOW LETS IN NATURAL LIGHT AND SCENERY BY DAY. TINT AND SHADES CAN KEEP THE SUN OUT FOR SLEEPING.



STORAGE

THE BEAUTIFUL HARDWOOD WARDROBE PROVIDES PLENTY OF ROOM TO STORE YOUR ITEMS



HEAVY DUTY CLOSET ROD DESIGNED TO ACCOMMODATE FULL SIZE HANGERS AT A CONVENIENT HEIGHT TO MAXIMIZE THE SPACE.

ORGANIZE

DRAWERS AND CUBBIES TO STORE AND PROTECT SMALLER ITEMS. THE FINISHED COUNTER TOP IS A HANDY WORKSPACE TO FOLD LAUNDRY.



LAUNDRY

STACKABLE WASHER AND DRYER COMPLETE THE WALK IN CLOSET ALLOWING YOU TO WASH, DRY, FOLD AND HANG YOUR LAUNDRY ALL IN ONE CENTRAL LOCATION.

FUNCTIONAL

DESIGNED TO BE FUNCTIONAL, PRIVATE AND AESTHETIC A FULL BATH AND A HALF DESIGN TO COMPLETE THE MASTER SUITE.



EFFICIENT

SPACIOUS COUNTERTOP, LARGE MIRRORED CABINET, RESIDENTIAL SIZE SINK AND PLENTY OF STORAGE FOR LINENS AND TOWELS.

REFRESHING

LARGE SHOWER WITH ETCHED GLASS DOOR, FLEXIBLE SHOWER HEAD AND SITTING SPACE



HEALTH LIVING

ENJOY THE DRY HEAT SAUNA FOR A HEALTHIER LIFESTYLE! (T40F)



STORE AMORÉ

NEW SIDE HINGED SECTIONED, LIGHTED AND CARPETED BASEMENT STORAGE COMPLETE WITH CUSTOM STORAGE TUBS



EASY ACCESS

BATTERIES CONVENIENTLY LOCATED INSIDE THE HOOD FOR GENERAL MAINTENANCE AND REPLACEMENT



OUTSIDE GRILL

PREPARE MEALS ON THE PATIO UNOBS-TRUCTED BY SLIDES WITH THIS EASY TO SET UP OPTIONAL GAS GRILL

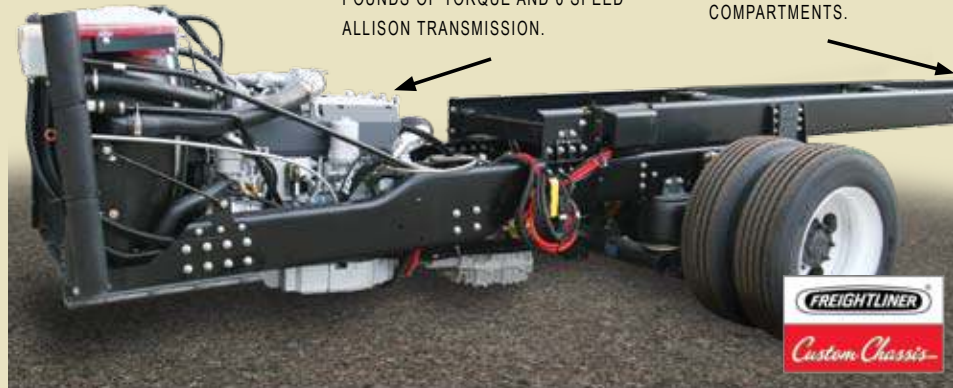


It's About Service

TOUR MASTER INC. IS DEDICATED TO WORLD CLASS CUSTOMER SERVICE. WE HAVE A TEAM OF REPRESENTATIVES TRAINED TO GIVE YOU THE ANSWERS YOU NEED WHEN YOU NEED THEM SO YOU CAN GET ON WITH LIVIN'.

BACKED BY TOURMASTER'S WARRANTY AND PARTS DEPARTMENT YOU CAN BE CERTAIN THAT YOUR MOTORHOME WILL BE REPAIRED QUICKLY AND ACCURATELY.

425HP CUMMINS DIESEL 1200 FOOT POUNDS OF TORQUE AND 6 SPEED ALLISON TRANSMISSION.



RAISED RAIL CHASSIS DESIGN ALLOWS FOR 7.5 FOOT INTERIOR CEILINGS AND MAXIMIZED BASEMENT STORAGE COMPARTMENTS.

THE TOURMASTER IS BUILT ON A RAISED RAIL FREIGHTLINER CHASSIS. FREIGHTLINER IS PROUD TO BE THE LARG-EST SERVICE CHAIN IN THE RV INDUSTRY. THERE ARE HUNDREDS OF FREIGHTLINER SERVICE CENTERS ACROSS THE U.S. THAT ARE CERTIFIED TO WORK ON YOUR TOURMASTER'S CHASSIS AND ENGINE SO YOU KNOW HELP IS NOT FAR AWAY.



G.O.L.D. Program

Tourmaster is dedicated to our customers and their enjoyment of our products. Our golden promise, is to call you within four weeks of the new vehicle purchase date welcoming you to the Tourmaster family. This call, made by your dedicated customer care person, is to let you know that if you ever need assistance with the operation of components, troubleshooting, or if you ever need to locate an authorized service center, you can rest assured that help is but a phone call away. With the G.O.L.D. Program we'll be there for you for the lifetime of your RV.

Coach-Net®

24 HR. EMERGENCY ROADSIDE ASSISTANCE

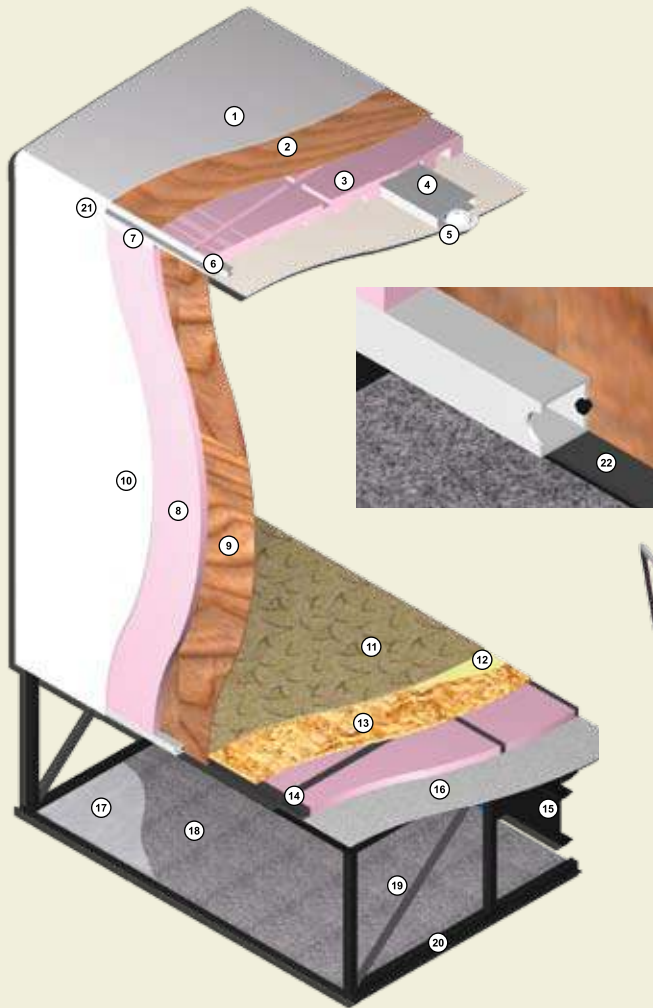
- One Year Coach-Net Membership
- Towing and Winching
- Delivery of emergency Fluids
- Flat Tire Change
- Jump-Start / Battery Boost
- Mobile Mechanic
- Lockout

2 YEAR UNLIMITED MILEAGE TRANSFERABLE WARRANTY
ON STRUCTURAL COMPONENTS*

One year unlimited mileage total use warranty under normal use against defects in material and/or workmanship in construction and original components. *For purposes of this warranty, "Structural components" shall be limited to the structure of the side walls, front and back walls, roof and floor. See the official written Tourmaster, Inc. Limited Warranty for details.

It's About Strength

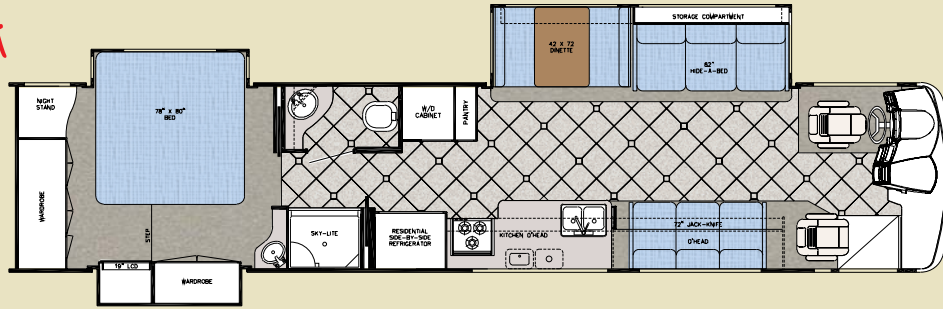
EVEN THE GREATEST FEATURES ARE USELESS WITHOUT A STRONG FOUNDATION TO BUILD ON. THE TOUR MASTER'S UNPARALLELED CONSTRUCTION METHODS RESULT IN A ROCK-SOLID RAISED RAIL AND TRUSS CONFIGURATION THAT ACT AS THE CORNERSTONE FOUNDATION FOR THIS LUXURY DIESEL MOTORHOME.



1. Seamless Fiberglass Roof For Greater Strength Energy Efficiency and Dependability.
2. Luan Decking for Additional Strength.
3. Molded, High Density EPS (Expanded Polystyrene) Roof Brick Insulation - Provides Consistent Insulation Value as well as Superior Dimensional Rigidity.
4. One-Piece Formed Aluminum Air Conditioning Duct, Completely Surrounded By EPS Insulation.
5. Bubble-Wrapped Foil Insulation Provides Superior Insulation and Helps Prevent Condensation.
6. Rugged Welded Tubular Aluminum Roof Framing.
7. Rugged Heavy-Gauge Tubular Aluminum, Fixture Welded to Form the Sidewall Framing.
8. High-Density EPS Insulation Provides Superior Lamination and Bonding Characteristics and Insures Greater Energy Efficiency.
9. Interior Wall Panels Securely Laminated to Sidewall Framing.
10. "Super Slick" Fiberglass Exterior Vacuum bond Laminated to Sidewall Framing for Lasting Beauty and Durability.
11. High-Quality Stain-Resistant Carpeting Available in Designer Coordinated Colors.
12. Extra-Thick Padding Under Carpet Provides Extra Comfort and Increases Carpet Durability.
13. Seamless Structurewood Floor Decking Laminated to Steel Floor Structure Assures a Quiet, Long-Lasting Rigid Floor.
14. Heavy-Gauge Tubular Steel Framing, Fixture Welded for Extra Strength and Stability.
15. Heavy-gauge Welded Steel Floor Truss System Provides the Strongest Foundation in the Industry.
16. Seamless Layer of Galvanized Steel Securely Attached to the Steel Floor Framing.
17. Galvanized Steel Used to Form Each Storage & Holding Compartment.
18. Durable All-Weather Carpeting Completes Each Accessible Storage Compartment, Providing Extra Protection for Luggage and Valuables.
19. Rust-Prohibitive Paint Coating Applied to All Steel Framing Assures Corrosion and Rust Protection.
20. The Industry's Strongest, Most Spacious Exterior Storage Compartments.
21. Heavy-Gauge Aluminum Radius Transition.
22. Sill-Plate Construction, Sidewall Sits on Steel Lip and is Lagged into Floor Frame for Greater Structural Integrity.



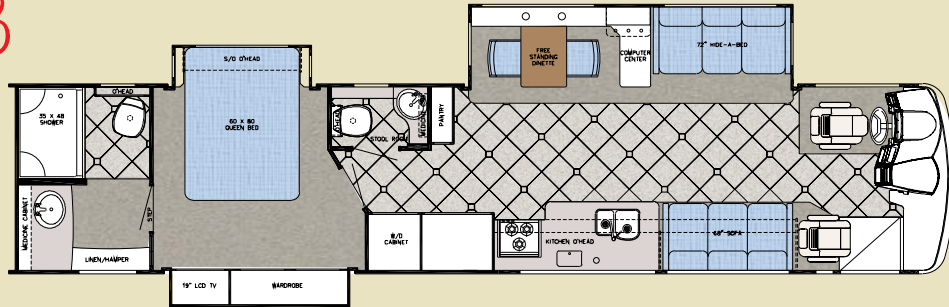
T-40A



MODEL T40A STANDARD EDITION

MEASUREMENTS		TANK CAPACITIES	
GVWR	32,400	WATER HEATER	10 GAL.
WHEEL BASE	288"	GRAY TANK	75 GAL.
OVERALL LENGTH	42'-9"	BLACK TANK	75 GAL.
OVERALL HEIGHT	12'-6"	FRESH WATER	90 GAL.
INTERIOR HEIGHT	7'-6"	LP TANK	115 LB.
INTERIOR WIDTH	96"	FUEL TANK	100 GAL.
EXTERIOR WIDTH	100"		

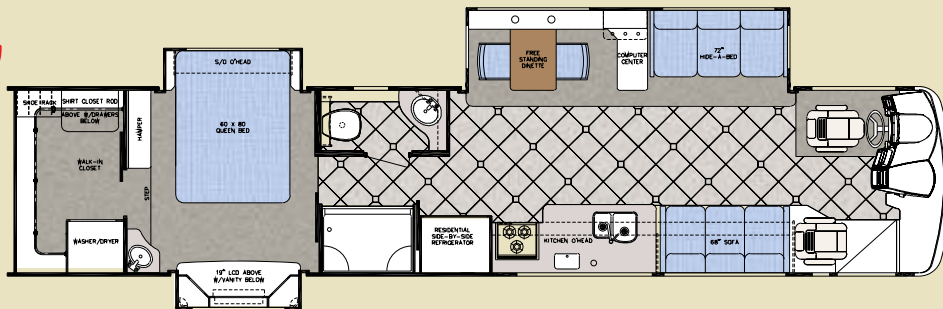
T-40B



MODEL T40B STANDARD EDITION

MEASUREMENTS		TANK CAPACITIES	
GVWR	32,400	WATER HEATER	10 GAL.
WHEEL BASE	288"	GRAY TANK	75 GAL.
OVERALL LENGTH	42'-4"	BLACK TANK	75 GAL.
OVERALL HEIGHT	12'-6"	FRESH WATER	90 GAL.
INTERIOR HEIGHT	7'-6"	LP TANK	115 LB.
INTERIOR WIDTH	96"	FUEL TANK	100 GAL.
EXTERIOR WIDTH	100"		

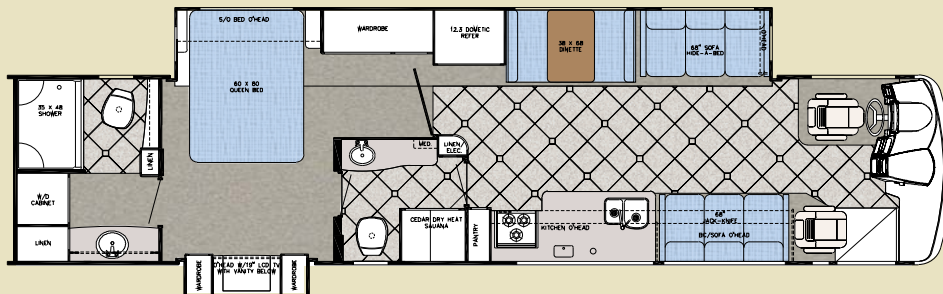
T-40C



MODEL T40C STANDARD EDITION

MEASUREMENTS		TANK CAPACITIES	
GVWR	32,400	WATER HEATER	10 GAL.
WHEEL BASE	288"	GRAY TANK	75 GAL.
OVERALL LENGTH	42'-9"	BLACK TANK	75 GAL.
OVERALL HEIGHT	12'-6"	FRESH WATER	90 GAL.
INTERIOR HEIGHT	7'-6"	LP TANK	115 LB.
INTERIOR WIDTH	96"	FUEL TANK	100 GAL.
EXTERIOR WIDTH	100"		

T-40F



MODEL T40F STANDARD EDITION

MEASUREMENTS		TANK CAPACITIES	
GVWR	32,400	WATER HEATER	10 GAL.
WHEEL BASE	288"	GRAY TANK	75 GAL.
OVERALL LENGTH	42'-10"	BLACK TANK	75 GAL.
OVERALL HEIGHT	12'-6"	FRESH WATER	90 GAL.
INTERIOR HEIGHT	7'-6"	LP TANK	115 LB.
INTERIOR WIDTH	96"	FUEL TANK	100 GAL.
EXTERIOR WIDTH	100"		

It's About Standards

CHASSIS

32,400 GVWR, 425 HP CUMMINS FREIGHTLINER,
100 GA FUEL TANK (T40 A, B, C, F)

EXTERIOR

SLICK FIBERGLASS EXTERIOR WITH
PAINTED AND VINYL GRAPHICS
HEATED & REMOTE EXTERIOR MIRRORS
PRE-MOLDED FRONT AND REAR FIBERGLASS CAPS
LAMINATED FIBERGLASS ROOF
THERMOPANE WINDOWS
KEYLESS ENTRY DOOR
ALUMINUM WHEELS
DELUXE FULL BODY PAINT (BLACK, TAN, SAND)
LOGO REAR ROCK GUARD
EXTERIOR PULL OUT GAS GRILL

POWER

BATTERIES: (2) ENGINE, (2) 12V HOUSE,
4-6V INVERTER
BATTERY DISCONNECTS
AUTO GENERATOR START
8.0 POWERTEK QUIET DIESEL GENERATOR (T40A,B,C,F)
50 AMP SERVICE W/AUTO TRANSFER SWITCH
AND 80 AMP CONVERTER
2000 WATT INVERTER

ELECTRICAL

COLOR BACK-UP MONITOR W/ AUDIO
SIDE MOUNTED CAMERAS
FLUORESCENT CEILING LIGHTING
WALL SWITCHES FOR ALL CEILING LIGHTS
AM/FM/CASSETTE STEREO WITH
CD PLAYER AND SPEAKERS
MASTER-SURROUND SOUND SYSTEM WITH
DVD IN LIVING ROOM
MAP LIGHTS
HALOGEN ACCENT LIGHTING
OVERHEAD ADJUSTABLE READING LIGHTS
OVERHEAD BLOWER
ANTENNA WITH AMPLIFIER, BOOSTER
LIGHTED ENTERANCE HANDLE
CB ANTENNA

ENERGY MANAGEMENT SYSTEM
ONE PHONE JACK IN KITCHEN AND ONE IN BEDROOM
AUTO DOUBLE ELECTRIC STEP
19" LCD COLOR TV IN BEDROOM
32" LCD COLOR TV IN FRONT OVERHEAD
AUDIO/VIDEO SWITCH BOX
LIGHTED EXTERIOR STORAGE BINS
EMERGENCY START SWITCH IN DASH
SATELLITE DISH SYSTEM W/AUTO LOCATE
VISTA LIGHTS
GPS NAVIGATION & MP3 PLAYER

HEATING AND COOLING

DASH A/C
3-SPEED FANTASTIC ATTIC FAN
IN LIVING ROOM WITH WALL SWITCH
40,000 BTU DUCTED FURNACE (1) 40,000
(1) 25,000
LOW PROFILE DUCTED ROOF A/C
3 ROOF A/C (2) 15,000 (1) 13,500

BATH

POWER VENT IN COMMODE W/ WALL SWITCH
PORCELAIN PEDAL STOOL W/ SPRAYER
SKY DOME IN SHOWER
HOLDING TANK FLUSH KIT
HANDLE
BATH AND HALF BATH (T40 B, F)

DÉCOR

CERAMIC TILE IN KITCHEN, BATH, ENTRY
MAPLE HARDWOOD CABINETRY
DAY/NIGHT PLEATED SHADES
METAL MINI BLIND KITCHEN
POWER PRIVATE SHADE
BEDROOM HAMPER
CORIAN™ COUNTERTOP'S THROUGHOUT
VINYL CEILING LINER
DECORATIVE CROWN CEILING MOLDING
MIRRORED MEDICINE CABINET

FURNISHINGS

2-TONE COPILOT SEAT
2-TONE 6-WAY POWER PILOT SEAT
60 X 80 BED WITH DELUXE INNERSPRING
MATTRESS (T40 B, C)

78 X 80 BED WITH INNERSPRING MATTRESS & POWER LIFT
(T40 A)
SOFT TOUCH H-A-B SOFA (DS)
3-POINT SEATBELTS
DINETTE TABLE & CHAIRS (TT40 A)
BUFFET DINETTE & CHAIRS & COMPUTER WORKSTATION (T40
B, C)
(2) THROW PILLOWS (PER SOFA)
& (2) BEDROOM PILLOWS
SOFT TOUCH J-KNIFE SOFA (T40 A, B, C)
WALK IN CLOSET (T40 C)

APPLIANCES

22 CF RESIDENTIAL SIDE BY SIDE REFRIGERATOR
MONITOR PANEL
FLUSH STOVE TOP COVER
3-BURNER RANGE WITH OVEN
30" OTR CONVECTION MICROWAVE
WATER PURIFIER
10 GAL DSI WATER HEATER
115# LP TANK
CARBON MONOXIDE DETECTOR
LP GAS LEAK DETECTOR
PREP FOR WASHER/DRYER

MISCELLANEOUS

ARCTIC PACKAGE
LEVELING SYSTEM
10,000 LB TRAILER HITCH
INTERIOR S.S. ENTRY ASSIST HANDLE
STORE AMORÉ IN BASEMENT
CARPETED STORAGE BINS
MUD FLAPS (FRONT & REAR)
WATER MANIFOLD SYSTEM
FIRE EXTINGUISHER (2)
POWER SUN VISORS
ENTRANCE DOOR AWNING
DELUXE ELECTRIC MAIN AWNING W/ WIND SENSOR
SLIDE OUT TOPPERS
RALLY HOOKUP
• HOSE FAUCET • SHOWER HOSE, HEAD & FAUCET
• TELEPHONE HOOKUP • CABLE TV HOOKUP
• PAPER TOWEL ROLL DISPENSER
REAR LADDER
ALUMINUM RIMMS
POWER STEPWELL COVER

POPULAR OPTIONS

EXTERIOR

- ALUMINUM SLIDING TRAY IN BASEMENT
- DELUXE FULL BODY PAINT WITH
DOUBLE CLEAR COAT
 - BLUE FUSION ○ TUNGSTEN SILVER
 - SONOMA RED ○ TITANIUM SAND

ELECTRICAL

- DELUXE AIR HORNS
- POP UP TV WITH EURO RECLINER
- 15" LCD COLOR TV BEHIND PASSENGER SEAT
- 19" LCD COLOR TV IN BASEMENT
- IN MOTION SATELLITE SYSTEM
- POWER CORD REEL
- BEDROOM SURROUND SOUND SYSTEM/DVD
- HEAT PUMPS

FURNISHINGS

- 2-TONE COPILOT SEAT W/ELECTRIC FOOT REST
- 1 RECLINERS WITH FLIP-UP TABLE
- FREESTANDING DINETTE WITH CHAIRS (2)
- FOLDING CHAIRS - WOODEN/MATCH DECOR (2)

APPLIANCES

- STACKABLE WASH/DRYER (T40 A, B, C, F)
- SLIDE OUT FREEZER IN BASEMENT
- 2 WAY 4 DOOR NORCOLD REFRIGERATOR
WITH ICEMAKER

BATH

- SHOWER IPO SAUNA (T40F)

MISCELLANEOUS

- ALUMINUM SLIDING TRAY IN BASEMENT
- ELECTRIC HOLDING TANK DUMP VALVES

HEATING & COOLING

- 3 SPEED FANTASTIC ATTIC FAN W/WALL SWITCH
IN ○ BEDROOM ○ SHOWER ○ COMMODE

It's Time to
Start Livin'



Gulf Stream Coach has been a manufacturer of recreational vehicles for over 25 years. Our slogan, "Family Value", speaks to our family-owned company, the value offered in our products and to our customers.

We use advanced manufacturing techniques to build everything from entry-level travel trailers to luxury motorhomes. We offer the largest product line in the industry.

RV dealers and consumers look to Gulf Stream for high-value products offering quality construction, innovative features, contemporary design, unmatched service and on-going support.

**We'd love to have you as
part of the family!**



YOUR LOCAL DEALER

For more information and available options, contact your local Tour Master dealer, www.tourmasterRV.com or Tour Master, Inc. Tour Master, Inc., reserves the right to make changes in prices, colors, materials, components and specifications and to discontinue models at any time without notice or obligation. Tour Master, Inc., assumes no responsibility for any error in type or print reproduction of specifications or floorplans in this brochure. Photographs may show equipment or items that are optional and are not included in the purchase price of the coach. Test drive and review a current model at your nearest Tour Master dealer. © 2008 Tour Master, Inc., Nappanee, Indiana U.S.A.

010808-SP-5k Ver 1

TOUR MASTER INC.

**P.O. BOX 426 • NAPPANEE, IN 46550
PH. 800-211-8794 • FAX (574) 773-7473
WWW.TOURMASTERRV.COM**

VISIT

WWW.GULFSTREAMRV.COM