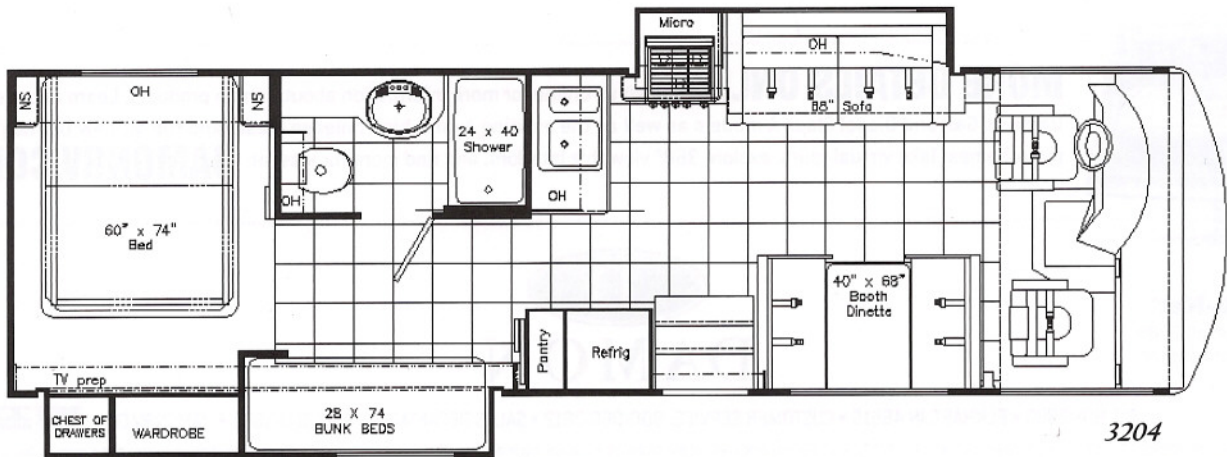
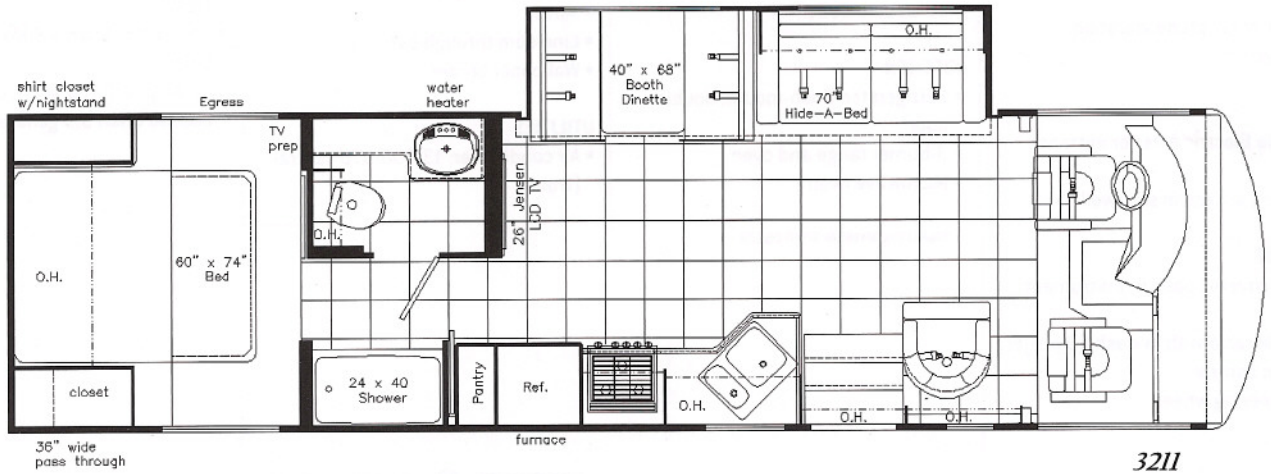


# 2009 SPORT

Class A Gas  
by Damon Motor Coach





# 2009 DAYBREAK SPORT

## STANDARD FEATURES & OPTIONAL EQUIPMENT

### EXTERIOR

- Wide-body design
- Rear ladder
- Fiberglass front and rear caps
- Side-mounted patio awning
- White fiberglass exterior with deluxe graphics
- Radius corner domed TPO roof
- Locking exterior storage doors
- White trimmed, radius-top entrance door with deadbolt lock and black trimmed clear window with shade and valance
- Black framed, radius corner windows
- Patio light
- Easy-to-clean lighted rotocast storage compartments
- Full basement pass-through storage

### CHASSIS

- Wheel covers
- Front and rear mud flaps
- Trailer hitch (5,000 tow / 500 tongue lbs.)
- Under-hood light
- Emergency-start circuit
- Automatic transmission with over-drive
- Layer of neoprene vibration dampener

### ENTRY

- Double Electric exterior entrance step
- Battery access in stairwell

### COCKPIT

- Vinyl covered dash w/instrument pod
- AM/FM radio with in-dash CD player
- Cruise control
- Tilt steering wheel

- Map light
- Tinted wrap around one piece windshield
- Windshield privacy shade
- Side mount power mirrors
- Reclining swivel "Faux Leather" captain's chairs
- 3-point, wall-mounted seat belts
- Sun visors
- Electronically controlled dash air conditioning
- Back up system prep
- Drink holders

### LIVING AREA

- "Faux Leather" sofa (3204)
- "Faux Leather" hide-a-bed (3211)
- Lambrequin window treatments
- Night shades
- Linoleum throughout (carpeted slide-out floor)
- 100% nylon carpet with stain treatment and pad
- 26" Color LCD/TV with full-function remote with antenna, booster and co-ax connection

### KITCHEN

- Refrigerator: flush-mount, double-door
- 3-burner range and oven
- Microwave oven

- Lighted power range hood with monitor panel and LPG read out
- Wood cabinet doors
- Linoleum through out
- Booth dinette
- Mini blind
- Wallpaper border
- Ball bearing drawer guides

### BEDROOM

- Innerspring mattress
- Bunk beds (3204)
- Wardrobe
- Bedspread
- TV area and co-ax connection
- Mini blinds at bunk beds
- Night shades
- Carpet through out

### BATHROOM

- Shower with surround
- Shower door
- Skylight in shower
- Power vent
- Hand flush toilet
- Mirror
- Linoleum through out
- Wallpaper border

### UTILITIES

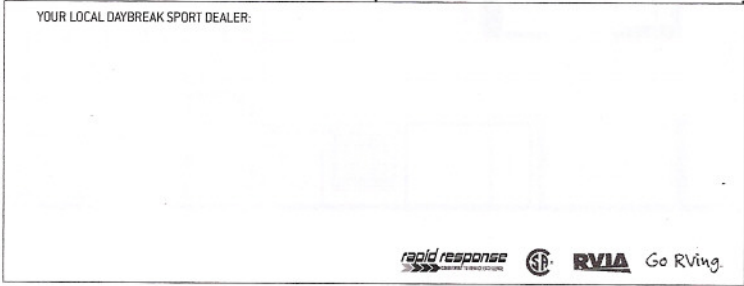
- Air conditioner: 13,500-BTU central (front)

- Air conditioner: Rear prep with wiring
- Thermostatically controlled air conditioning
- Furnace: 30,000 BTU electronic ignition surface mount door floor-ducted
- Water heater: 6-gallon gas with electronic ignition and surface mount door
- Water heater bypass kit
- Generator: Generac 5.0 kw Impact (30 amp service only)
- 60 amp converter
- Deep cycle battery
- Battery disconnect
- 30 amp/120 volt service
- Enclosed heated potable and holding tanks
- Telephone and cable TV hookup
- Exterior GFCI receptacle
- Carbon monoxide, propane gas and smoke detectors

### OPTIONS

- Black framed dual-pane windows
- Air conditioner: 13,500-BTU central (rear)
- Generator: Onan 5.5 kW Marquis Gold
- 50 amp/120 volt service (must choose Onan 5.5 generator)

YOUR LOCAL DAYBREAK SPORT DEALER:









**MORE DETAILS ONLINE** Visit us online for more information about Damon products. Learn about each of Damon's Gas and Diesel Class A models as well as the exciting Avanti high mileage diesel and the all-new Del-Ray Class C motorhomes. Take virtual tours, explore 360° viewable interiors, and find more for less, at: **DAMONRV.COM**

### Coach-Net®

Available on all 2009 Damon Motorhomes



P.O. BOX 2888 • ELKHART, IN 46515 • CUSTOMER SERVICE: 800-860-3812 • SALES DEPARTMENT: 800-860-5658 • DAMONRV.COM



Due to constant product improvements, the specifications, component parts and standard/optional equipment are subject to change without notice or obligation. Product photography or diagrams may show equipment that is optional. Damon Motor Coach reserves the right to make changes in prices and models and to discontinue models without notice or obligation. Components, parts or chassis may have been manufactured at times other than the model year indicated. All capacities are approximate and dimensions are nominal. All dry weights are based on standard model features and do not include optional features or equipment. Various RV components and features may differ to conform to local codes. Due to EPA environmental restrictions, engine power and torque ratings may change mid-year.