

2 0 0 7



*Pacifica*



# ALL NEW FOR '07

National RV proudly introduces a diesel motorhome that will keep you in style, comfort and luxury wherever the road takes you. Pacifica features many of the latest innovations from National RV, blending bold automotive styling with spacious, livable floor plans. Modern conveniences such as side-opening compartment doors and a panoramic 1-piece windshield are combined with proven National RV technologies such as the patented DuraFrame® Chassis System and all tubular steel coach body construction. Step inside the 2007 Pacifica and experience a rare confluence of cutting edge technology with over 40 years of RV engineering experience.



Main: QS40C • Sedona • Natural Cherry  
Below: TE40B • Carmel











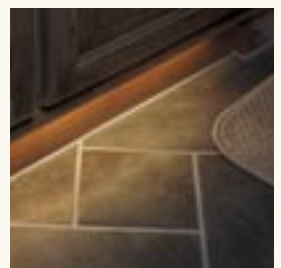
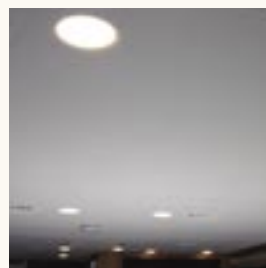
**✓ EXPERIENCE THE NATIONAL RV ADVANTAGE!**  
We build every National RV to far surpass the competition in every aspect. Look for this banner throughout the following pages for more information on important items that help make up The National RV Advantage.

## LIVING SPACE

Pacifica's richly appointed interiors feature a choice of three fabulous décors: *Carmel* (shown here), *Charleston* or *Sedona*. To complement these elegant interiors, choose from natural maple, natural cherry or stained cherry (shown here) wood finishes. Functional yet beautiful hand laid ceramic tile covers the entire floor of the main living area, hallway and bathroom. Indirect accent floor lighting and recessed halogen ceiling lamps provide just the right light for any mood. See the back page of this brochure for wood and fabric samples from each décor.

Main: TS36A • Carmel • Stained Cherry  
Below left: Recessed halogen ceiling lights  
Below right: Indirect floor lighting

*This is Living!*





# KITCHENS

A variety of attractive floorplans provide several spacious kitchen configurations to choose from. All models feature an expansive Corian®-topped kitchen counter with an elegant inlaid tile backsplash. The huge 12 cubic foot 4-door refrigerator with icemaker provides plenty of cold storage for lengthy visits. Hand-made cabinets are crafted of genuine natural maple or either natural or stained cherry hardwoods. Residential-style concealed hinges provide a refined appearance, while stainless steel ball bearing drawer guides and premium hardware yield smooth operation. A versatile convection microwave makes heating up a snack or baking a full-course meal quick and easy. Hand-laid ceramic tile spans the entire kitchen floor and continues into the hallway and bathroom.



Main: TE40B • Charleston • Natural Maple  
Below: TE40B • Carmel • Natural Cherry



*Just Like Home*



✓ **ANOTHER NATIONAL RV ADVANTAGE!**

**GENUINE CORIAN®**

Pacifica features genuine Corian® solid surface materials on the kitchen counter top and bathroom lavvy cabinet top. Other manufacturers cut costs by using imitation materials or laminates cleverly disguised with solid edge moldings. But we insist on the real thing. Nothing is as durable, impervious to stains and resistant to scratching than genuine Corian®.



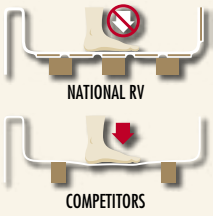




**✓ ANOTHER NATIONAL RV ADVANTAGE!**

**ONE-PIECE FIBERGLASS SHOWER**

Manufactured "in-house" at National RV to ensure quality, this shower is crafted of thick fiberglass with plenty of reinforcement for a sturdy, rigid feel. Step into a competitor's shower and you'll feel the difference as the plastic or lower quality fiberglass shower pan gives under your weight. One-piece construction means there are no seams in the shower enclosure where leaks can develop or mold and mildew can thrive. Built for years of trouble-free use, our one-piece reinforced fiberglass shower is truly a National RV Advantage!





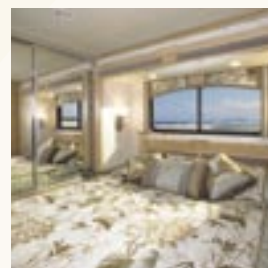
# MASTER SUITE

Pacifica's spacious bedrooms feature National RV's exclusive *Sandpiper Deluxe™* queen or optional king-sized pillow top comfort mattress. For the ultimate in restful sleep, an available air mattress provides customizable comfort. Huge wardrobes, cabinets, drawers and under-bed storage provide plenty of space for long trips. Each model is available with an optional washer-dryer. Pacifica's open bathroom configurations are spacious and thoughtfully arranged. Most models feature private toilet rooms with a second wash basin. All feature National RV's coveted one-piece, reinforced fiberglass shower for residential quality.



Main: TS36A • Carmel • Stained Cherry  
Below left: TE40B • Charleston • Maple  
Below right: QS40C • Sedona • Natural Cherry

## *The Master Suite*





**ANOTHER NATIONAL RV ADVANTAGE!**

**KUSTOM-FIT® SEATING**

Built especially for National RV, this cockpit and living area seating exceeds the comfort and quality of furniture in much more expensive "highline" motorhomes. The foam of each seat cushion is *cold poured* as a single piece, molded in the correct shape. Competitors' seats are pieced together from blocks of foam which can come unglued and fall apart. This seat foam is so durable it carries a 10 year warranty. The rugged seat frame is constructed of welded tubular steel for superior strength and carries a lifetime warranty.





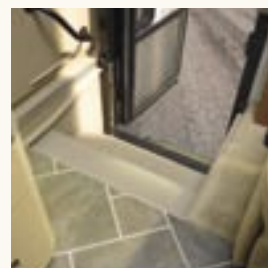
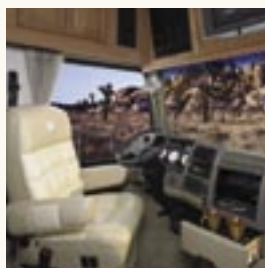
Pacifica's all new cockpit is a study in comfort and function. Ergonomically designed with a wealth of essential controls and monitoring systems within easy reach, Pacifica's cockpit makes getting there as pleasurable as the destination itself. The center glove compartment keeps your multi-disc CD changer, power and data hook-ups within reach, and provides a convenient place to store your cell phone, MP3 player and other essential gadgets. A bright LCD screen is fully integrated into the coach's sound and navigation systems, including the stereo, GPS and 3-camera rear vision systems. Adjustable pedals, a large 18" VIP® SmartWheel and plush Kustom-Fit® seating ensure you'll arrive at your destination fresh and ready for adventure.

## *Getting There in Style*

**Main:** Automotive dash styling

**Below left:** Ergonomically designed cockpit

**Below:** Flush floor stepwell cover, open (left) and closed (right)



# E X T E R I O R

Pacifica's automotive-inspired styling is manifested in expressive front and rear caps, formed aluminum compartment doors and bold full body paint schemes. The one-piece windshield and low-mount wipers provide an unobstructed view and automotive style. Convenient side-hinged compartment doors open at a 5° downward angle for better clearance and smooth operation. The raised rail Freightliner XC chassis yields a huge, flat-floor pass-through basement compartment. Easily access your gear from either side of the coach with the full-width, dual-directional slide-out storage tray. The 8.0 kW Onan® Quiet Diesel generator is mounted on a convenient slide-out caddy to easily reach routine maintenance points.



Main: QS40C • Charleston  
Below: 8.0 kW diesel generator on slide-out caddy



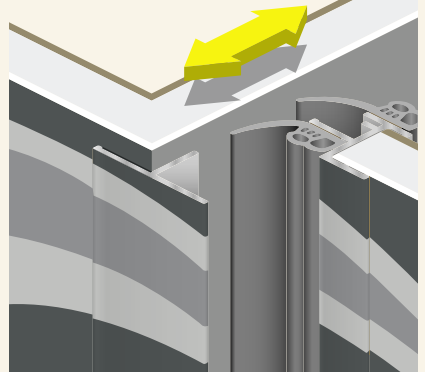
*Your Private Oasis*



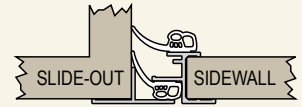


**✓ ANOTHER NATIONAL RV ADVANTAGE!**

**DURASLIDE™ FLUSH WALL SLIDE-OUT SYSTEM**



National RV's exclusive DuraSlide™ flush wall slide-out system provides more than just great looks. It is a testament to the engineering and quality manufacturing that go into every National RV motorhome.

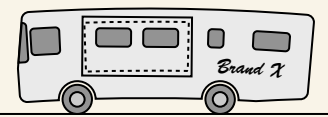


**FLUSH EXTERIOR SURFACE WITH SLIDE-OUT CLOSED**

With the slide-out fully retracted, the side of the coach has a smooth, flush surface at the slide-out seal. Double wipers with integrated bulb seals provide a positive seal even when the slide-out is in motion, keeping the weather outside and your cozy climate inside.

**WHY DON'T ALL MOTORHOMES COME WITH FLUSH SLIDE-OUT SEALS?**

National RV's careful engineering and tight manufacturing tolerances are what make the flush slide-out seal possible. The system depends on the rigid coach framework that National RV's DuraFrame® and tubular steel coach body framework provides.



Manufacturers who cut costs by building cheaper, less rigid motorhomes need to hide the resulting gaps and poorer fit by using a wide, protruding cover along the slide-out seams.



# D U R A F R A M E<sup>®</sup>

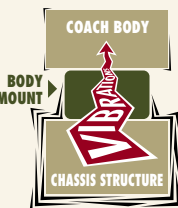
Every great home needs a solid foundation, and that's exactly what National RV's DuraFrame<sup>®</sup> Chassis System and all-steel tubular coach body construction provide. The DuraFrame<sup>®</sup> is specifically engineered to provide the strength that today's multiple slide-out motor homes require—all within the chassis system itself. DuraFrame<sup>®</sup>'s all steel, full welded system of tubular steel risers, plate steel outriggers and truss-like engineering provide an abundance of coach strength while enabling cavernous basement storage spaces. Other manufacturers rely on the coach sidewalls to absorb much of the stresses of travelling and bearing the coach's weight. DuraFrame<sup>®</sup> provides all of the strength necessary to support the coach within the structure itself—below the floor line and below the slide-outs.

## *Cold Hard Steel*

### ✓ ANOTHER NATIONAL RV ADVANTAGE!

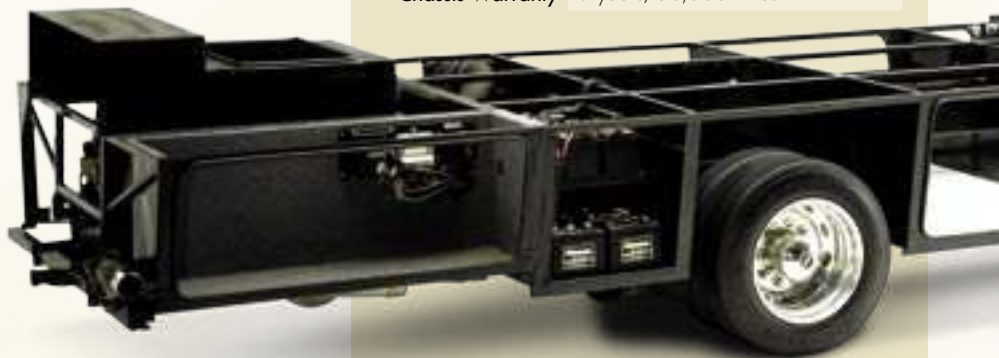
#### REVOLUTIONARY NEW VIBRATION ISOLATION SYSTEM

Rather than being rigidly welded directly to the chassis frame rails, Pacifica's DuraFrame<sup>®</sup> and coach body structure rides on a series of elastomeric body mounts which isolate the coach body from much of the noise, vibration and harshness generated while traveling on the road. This system is designed to reduce noise and vibration while improving handling and increasing the life expectancy of coach body components. Take a test drive in a Pacifica—you will hear and feel the difference!



### CHASSIS SPECIFICATIONS

Chassis	Freightliner <sup>®</sup> XC (raised rail)
Tires	Goodyear <sup>®</sup> G670 RV 275/80R 22.5 16 ply radial
Wheels	Polished aluminum front and outer rear wheels, steel inner rear wheels with valve extensions
Brakes	Full air brakes with Anti-lock Braking System (ABS)
Suspension	Neway full air ride suspension with manual air dump
Drive Axle Ratio	4.78:1
Fuel Capacity	100 gallons
Hitch	10,000 lbs. class IV with 7-pin electrical connector
Alternator	Leece-Neville 160-amp
Chassis Warranty	3 years/50,000 miles



### DRIVETRAIN SPECIFICATIONS

Engine	Caterpillar <sup>®</sup> C7 turbodiesel
Displacement	7.2 liters
Peak Horsepower	350 HP @ 2,400 RPM
Peak Torque	860 lbs./ft. @1,440 RPM
Exhaust Brake	Pac Brake <sup>®</sup>
Engine Warranty	5 years/200,000 miles
Transmission	Allison 3000MH
Transmission Type	6-speed automatic with overdrive
Shifter	Touch-pad electronic shifter with digital display
Transmission Warranty	5 years/200,000 miles

NOTE: Equipment and specifications depicted in this brochure are subject to change without notice.



✓ **ANOTHER NATIONAL RV ADVANTAGE!**

**SUPERIOR COACH BODY CONSTRUCTION**

National RV uses an advanced vacuum lamination process and the highest quality materials in the construction of the fully insulated roof, walls and floor.

**TUBULAR STEEL FRAME**

Stronger and less susceptible to work fatigue than aluminum and won't decay like wood.

**CROWNED ROOF**

The best RV roof in the business is built with arched tubular steel roof trusses. The crowned roof has radius edges for superior runoff.

**FIBERGLASS ROOF SKIN**

A seamless barrier against moisture; more durable and easier to maintain and repair than rubber or aluminum.

**¼" STRUCTURE-WOOD®**

This oriented strand board (OSB) from Weyerhaeuser carries a 25 year warranty and is used for both the roof deck and interior ceiling panel.

**EPS BLOCK FOAM INSULATION**

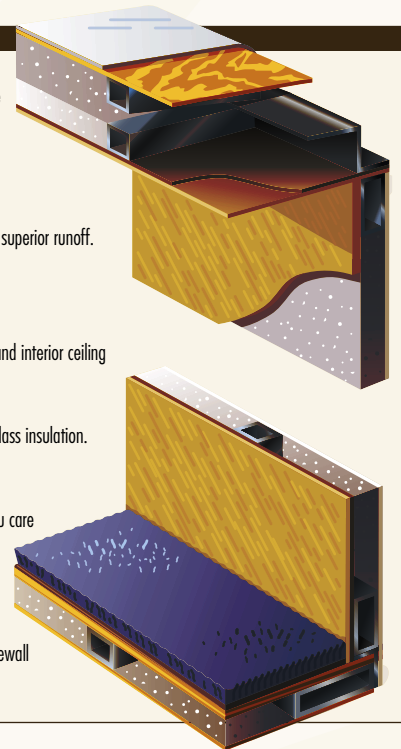
Used throughout the coach in every laminated coach body component. This foam won't settle or sag like spun fiberglass insulation. Insulation is up to 5½" thick in the roof, and completely surrounds the coach living areas. It's even in the floor!

**¼" THICK MAHOGANY INTERIOR WALL PANEL**

A thick, firm interior wall surface that's tough enough to anchor our cabinetry — and whatever pictures or fixtures you care to hang, wherever you want to hang them. Competitors' thin interior wall surfaces "give" when you push them, revealing their weakness beneath the surface, with reinforcements built in only where necessary to attach cabinets. Our interior wall surfaces are ¼" thick and rigid throughout!

**HIGH GLOSS GELCOAT EXTERIOR**

The exterior sidewall surface is made of a thick, resilient fiberglass gelcoat sheet that is vacuum laminated to the sidewall structure. The result is excellent resistance to delamination and long-lasting great looks.



NOTE: Some components and their locations as shown in the photo above may differ slightly from the actual components of the chassis used in the Pacifica. This photo is intended only as a general representation of the Duraframe Chassis System and is not intended to represent actual chassis components and their locations.

# SPECIFICATIONS

## COACH BODY CONSTRUCTION

Duraframe® patented steel sub floor construction	S
Steel framed laminated floor	S
Steel framed crowned laminated fiberglass roof	S
Steel framed laminated fiberglass high gloss sidewalls	S
steel cockpit overhead construction	S
Steel insulated front bulkhead	S
Front and rear molded high gloss fiberglass caps and integrated bumper assembly	S
One-piece tinted windshield	S
Manual slide-out generator	S
Auxiliary air manifold with air hose	S
Electric slide-out rooms (flush floor on lounge slides)	S
Formed aluminum, insulated side-hinged exterior storage compartment doors with gas struts	S
Steel framed exterior storage compartments with insulated floors	S
D-ring tie-downs in basement storage compartments	S
Dual directional slide-out basement storage compartment tray	O
Black aluminum rear ladder	S
Awning rail with integrated rain gutter and drip spouts	S
Automotive undercoating	S
Custom full body paint in three color schemes	S
Protective film front mask	O
7' 1" interior height	S
Dual fuel fills	S
Full width mud flap with logo	S

## COCKPIT FEATURES

Big button AM/FM stereo with MP3 player integration; CD player with four speakers and integrated LCD monitor	S
Sirius® satellite radio module with 6 month subscription	S
Color GPS navigation system (integrated into radio/LCD monitor)	S
Color rear vision system with microphone and side view cameras	S
Driver and passenger reading lights with switches	S
Custom designed dash with full gauge package	S
Multi-disc CD changer	S
Low-mount automotive style tandem windshield wipers	S
Roof mounted dual chrome trumpet air horns	S
Power steering	S
Electronic cruise control	S
18" VIP SmartWheel®	S
Adjustable accelerator and brake pedals	S
Audible turn signals	S
Two 2-speed overhead dash fans	S
Chrome power controlled heated exterior mirrors with integrated turn indicator lights	S
12V/120V receptacle and phone jack	S
Privacy curtain with easy reach wand	S
Manual driver side sun shade	S
Full width electric sunvisor	S
4-point hydraulic leveling jacks with dash mounted controls	S
Auto generator start with built-in hour meter	S
Illuminated stepwell	S
Electric stepwell with flush floor cover	S
Floor mats	S
Keyless entry	S

## APPLIANCES & ACCESSORIES

12 cu. ft. refrigerator with ice maker and stainless steel door panels	S
High output cook top with 3 sealed burners, flush mount Corian® range cover and range cover storage	S
Convection microwave oven with carousel, built-in light and fan	S
Cable TV hook-up and multiple telephone jacks	S
TV antenna	S
27" flat screen TV in living area (N/A on QH40D)	S
32" LCD TV in living area (QH40D only)	S
32" LCD TV and integrated game port in hutch area of living area (TE40B & QS40C only)	O
20" LCD TV with separate DVD in bedroom (QS40C only)	O
20" LCD TV in bedroom (QS40D only)	S
20" flat screen TV with front A/V jacks in bedroom (N/A on QH40D)	S
Video control box with antenna boost	S
Home theater entertainment package (includes DVD/VCR digital receiver and subwoofer/speaker system)	S
Pre-wired for satellite dish	S
Kingdome® automatic stationary satellite dish	O
Combination washer/dryer	O
Central vacuum system	O
Convenience package (includes hand vacuum, exterior radio and speakers, exterior rubber glove dispenser)	O
High output 3-bruner range with oven	O

## PLUMBING SYSTEMS

### Coach Exterior

Heated systems compartment with easy access to hook-ups	S
On demand water system and water pump	S
Holding tank rinsing system (black tank only)	S
Winterization antifreeze inlet to pump	S
Outside shower	S
Water heater bypass valve	S
Pressurized water fill with integrated regulator	S
10 gallon quick-recovery water heater with DSI (gas/electric)	S

### Kitchen Area

Water filter	S
Single lever faucet with detachable gooseneck sprayer	S

### Bath Area

One piece fiberglass shower with designer glass enclosure	S
Handheld shower head with flexible hose and vertical height adjustment bar	S
Porcelain toilet with sprayer	S
Single lever lavy faucet	S
Pre-plumbed for optional washer/dryer	S

## SAFETY FEATURES

Fog lights and daytime running lights	S
Adjustable driver and passenger three point seat belts	S
Deadbolt lock on entrance door	S
Fire extinguisher	S
Smoke, carbon monoxide (CO) and LPG detectors	S
Emergency exit window	S
Hand activated ICC flasher switch (momentary) on SmartWheel	S
Rear third brake light	S
Lighted acrylic exterior assist handle	S
Interior entry assist handle	S

S = Standard Equipment  
O = Optional Equipment



## FURNITURE

Kustom Fit® soft touch Ultra-Leather® 6-way power driver seat with swivel base	S
Kustom Fit® soft touch Ultra-Leather® power passenger seat with swivel base	S
Power footrest on passenger seat	O
Kustom Fit® Hide-A-Bed® fabric sleeper sofa with air mattress	S
Kustom Fit® soft touch Ultra-Leather® Hide-A-Bed® sleeper sofa with air mattress	O
Kustom Fit® soft touch Ultra-Leather® dual reclining sofa (N/A on TS36A)	O
Kustom Fit® soft touch Ultra-Leather® sofa (N/A on TS36A)	S
Kustom Fit® freestanding soft touch Ultra-Leather® Euro-recliner recliner with ottoman (TS36A only)	S

## INTERIOR

### Throughout

Natural Maple cabinets, doors and paneling	S
Natural Cherry cabinets, doors and paneling	O
Stained Cherry cabinets, doors and paneling	O
Vinyl padded ceiling material	S
Residential style concealed cabinet hinges	S
Drawers with ball bearing roller guide design	S

### Living Area

Booth dinette with slide-out bin drawers under seats	O
Dining table/cabinet with built-in table extension, two high-back wooden chairs and two wooden folding chairs	S
Hand laid ceramic tile flooring with designer accents	S
Day/night shades with designer valances	S
Hutch and overhead with beveled mirror (TE40B & QS40C only)	S

### Kitchen Area

Slide-out pantry	S
Corian® kitchen counter top, sink covers and flush mount cooktop cover	S
Ceramic tile backsplash with Corian® surround	S
Large stainless steel under mount dual sink	S
Wastebasket	S
Hand-laid ceramic tile flooring with designer accents	S
Mini blind with valance at kitchen window	S
Rubbermaid® silverware organizer tray	S

### Bath Area

Hand laid ceramic tile flooring with designer accents	S
Decorative glass shower door	S
Corian® topped lavvy cabinet with stainless steel sink	S
Medicine cabinet	S
Insulated skylight in shower	S

### Bedroom Area

Plush carpet with deluxe pad	S
Day/night shades with designer valances	S
Cedar lining in wardrobe and bed storage compartment	S
Lighted wardrobe with mirrored doors	S
Bedspread, pillows and shams	S
Slide-out queen bed with fabric wrapped under-bed base storage compartment	S
Sandpiper Deluxe™ residential-style queen size pillow top mattress	S
Sandpiper Deluxe™ residential-style king size pillow top mattress	O
Adjustable comfort queen size air mattress	O
Adjustable comfort king size air mattress	O

## ELECTRICAL SYSTEMS

50 Amp 120V distribution panel	S
50 Amp power cord	S
Electric power cord reel	O
12V re-settable push button residential style circuit breaker distribution panel	S
8.0 kW Onan® Quiet Diesel generator	S
(4) 6V deep cycle house batteries	S
2,000 watt inverter/converter with remote on/off switch	S
(2) 760 CCA 12V maintenance-free chassis batteries	S
Battery disconnect switch for house batteries	S
Interior systems monitor panel	S
Exterior systems monitor panel in service compartment	S
Porch light with interior switch	S
120V patio receptacle and telephone jack	S
Recessed halogen lights in ceiling with wall mounted switches	S
Indirect floor lights mounted under selected cabinets	S
Designer light fixtures in living and bedroom areas	S
Cosmetic light in bathroom	S
Three water pump switches (kitchen, bathroom and exterior plumbing service station)	S
Pre-wired for solar panel	S
Battery voltage meter in monitor panel	S
GFI protected electrical circuit	S
Courtesy light at entry-door switch panel	S
Lights in exterior storage compartments and service area	S
Pre-wired for trailer brake controller	S
Docking lights	S

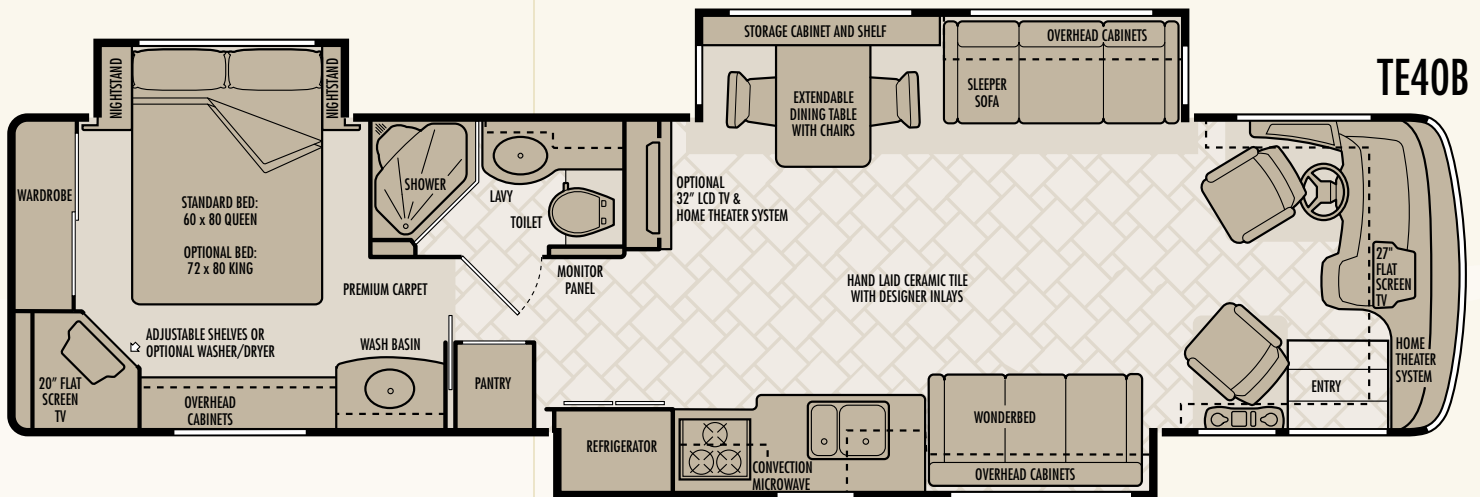
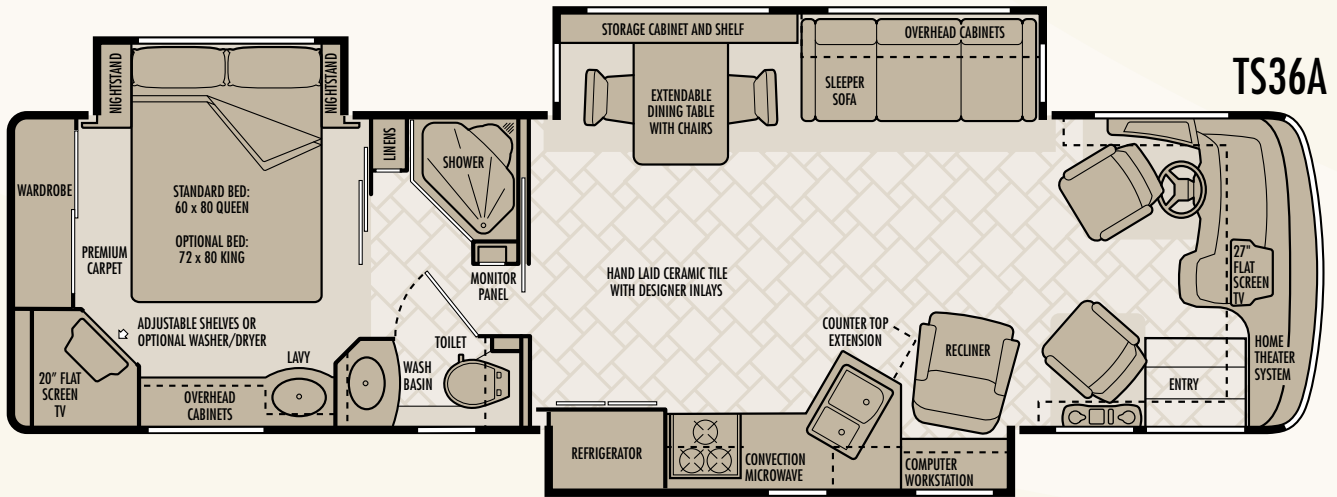
## WINDOWS, DOORS & AWNINGS

Dual pane radius tinted safety glass windows	S
Electric entry door awning with black hardware	S
Electric patio awning with black metal cover and hardware	S
Living room and bedroom window awning package	O
30" wide entrance door with driver-view ("dogleg") clear glass window and screen door	S
Power entrance step with light and anti-skid surface	S
Ventilated windows on sides of slide-out rooms (lounge slides only)	S
Oversized windows in living area	S
Slide-out topper awnings	S
Window in private toilet room (N/A on TE40B or QH40D)	S
Exterior windshield sun screens	O

## CLIMATE CONTROL

Coleman® 2-ton high efficiency basement mounted air conditioner and heat pump with ceiling ducting	S
Dual 20,000 BTU electronic ignition furnaces (N/A on QH40D)	S
35,000 BTU & 20,000 BTU electronic ignition furnaces (QH40D only)	S
Ducted heating system	S
Pre-wire for 12V Fan-Tastic® Vent with wall thermostat & rain sensor in bedroom	S
12V Fan-Tastic® Vent with thermostat & rain sensor in galley area	S
12V roof exhaust fan in bathroom	S
Non-powered roof vent in bedroom	S
12V Fan-Tastic® Vent with thermostat & rain sensor in bedroom	O
Dash automotive heating and air conditioner system with defroster	S

NOTE: Colors, equipment and specifications depicted in this brochure are subject to change without notice. Please verify the actual equipment installed on any specific motorhome prior to purchase.

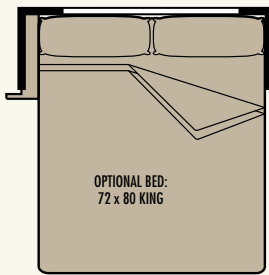


## Living Space

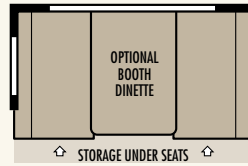
WEIGHTS & MEASUREMENTS	TS36A	TE40B	QS40C	QH40D
Gross Vehicle Weight Rating (lbs.)	32,000	32,000	32,000	32,000
Gross Combined Weight Rating (lbs.)	42,000	42,000	42,000	42,000
Front Gross Axle Rating (lbs.)	12,000	12,000	12,000	12,000
Rear Gross Axle Rating (lbs.)	20,000	20,000	20,000	20,000
Wheelbase	208"	252"	252"	262"
Overall Length	36' 5"	40' 1"	40' 1"	40' 9"
Overall Height (add 7" for sat. dish)	12' 3"	12' 3"	12' 3"	12' 3"
Interior Height	7' 1"	7' 1"	7' 1"	7' 1"
Interior Width	97½"	97½"	97½"	97½"
Exterior Width	101¼"	101¼"	101¼"	101¼"
Water Heater (gallons)	10	10	10	10
Fresh Water (gallons)	105	105	105	105
Gray Tank (gallons)	60	60	60	60
Black Tank (gallons)	40	40	40	40
LP-Gas (liquid volume, gallons)	40	40	40	40

NOTE: Colors, equipment and specifications depicted in this brochure are subject to change without notice.

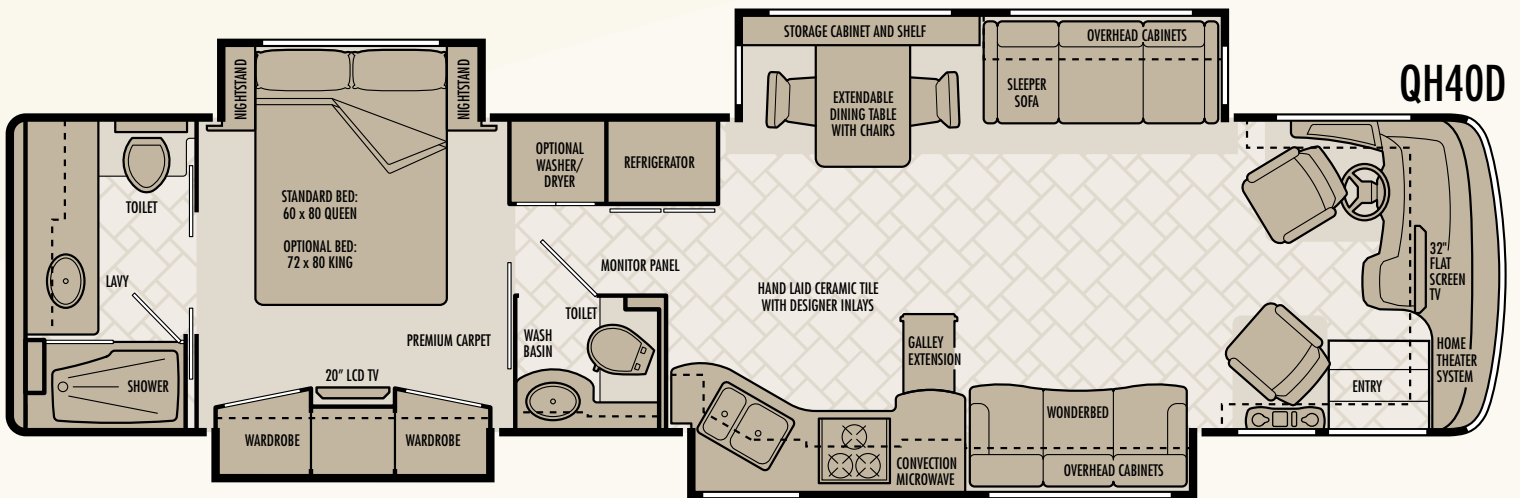
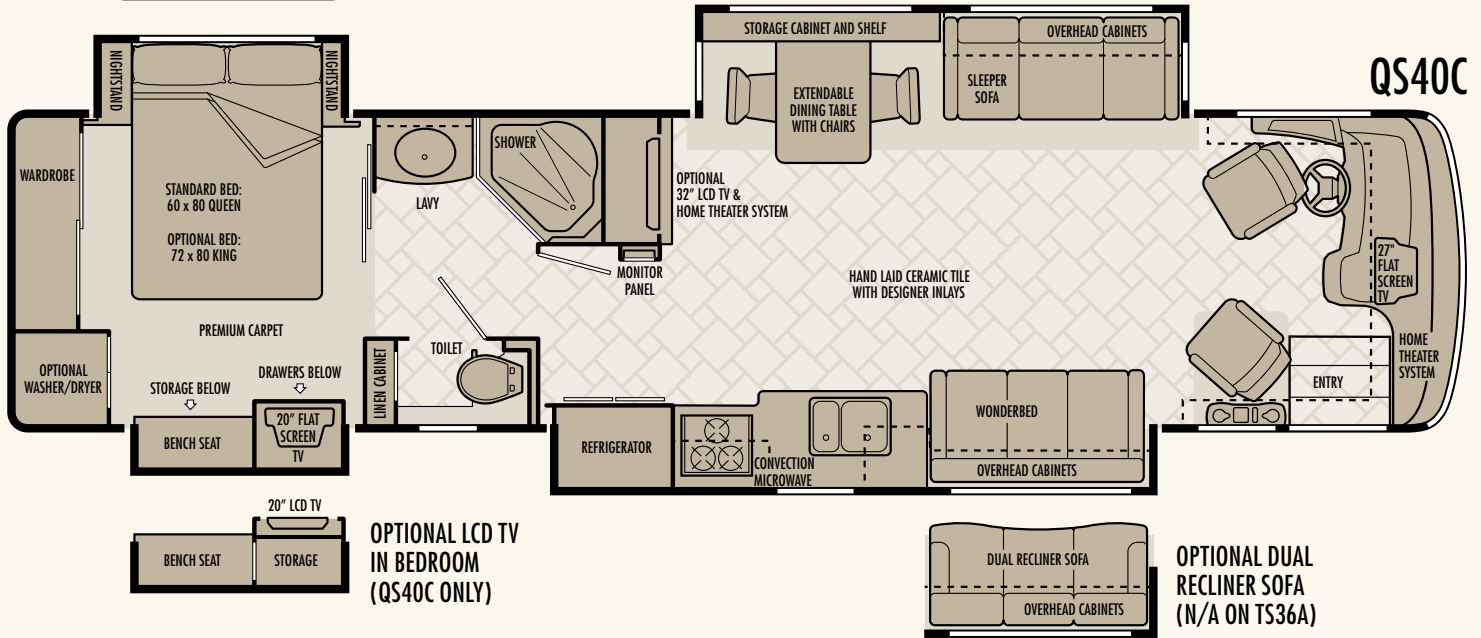




**OPTIONAL KING SIZE BED  
(ALL FLOORPLANS)**



**OPTIONAL DINING  
TABLE & CHAIRS  
(ALL FLOORPLANS)**



Below: TE40B • Carmel • Natural Cherry



**WOOD CHOICES**

**INTERIOR DECORS**

**EXTERIORS**

**NATURAL MAPLE**



**SEDONA**



**SEDONA**



**NATURAL CHERRY**



**CARMEL**



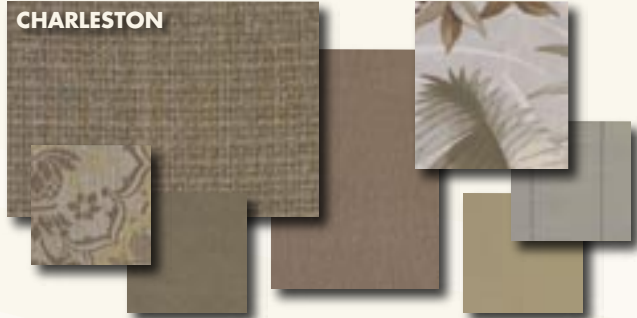
**CARMEL**



**STAINED CHERRY**



**CHARLESTON**



**CHARLESTON**



*2007 Pacifica*



**NATIONAL R.V., INC.**  
 3411 N. Perris Boulevard  
 Perris, California 92571  
 (800) 322-6007 • Fax (951) 943-8498  
**www.nationalrv.com**

©2006 National R.V., Inc. Colors, equipment and specifications depicted in this brochure are subject to change without notice. Please verify the actual equipment installed on any specific motorhome prior to purchase.

PACF07V1 • OCT 06



National RV, Inc. is a subsidiary of National RV Holdings, Inc., a public company whose shares are traded on the New York Stock Exchange under the symbol **NVH**. Please see **www.nrvh.com** for more information.



YOUR AUTHORIZED PACIFICA DEALER IS: