

2010

TIOGA Ranger

CLASS C

EXTERIOR*



* Full-body paint available. See your Fleetwood dealer or visit www.fleetwoodrv.com to view all graphics and color choices.



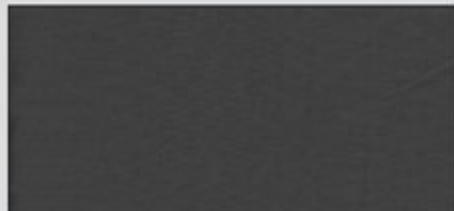
INTERIOR DÉCORS

Starlight

Living/Dining Room



Bedroom



Desert Sand

Living/Dining Room



Bedroom



Wood Finishes



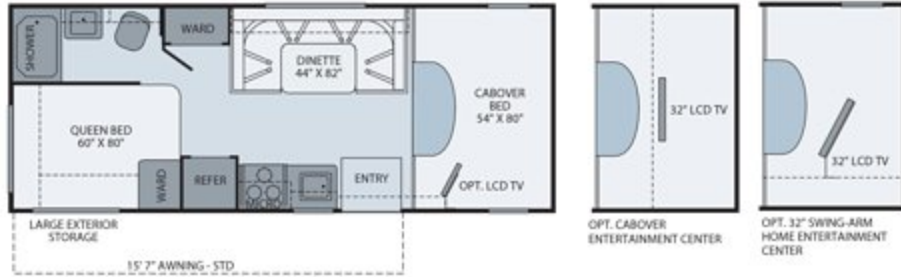
Symphony Cherry



Bijoux Cherry

FLOOR PLANS

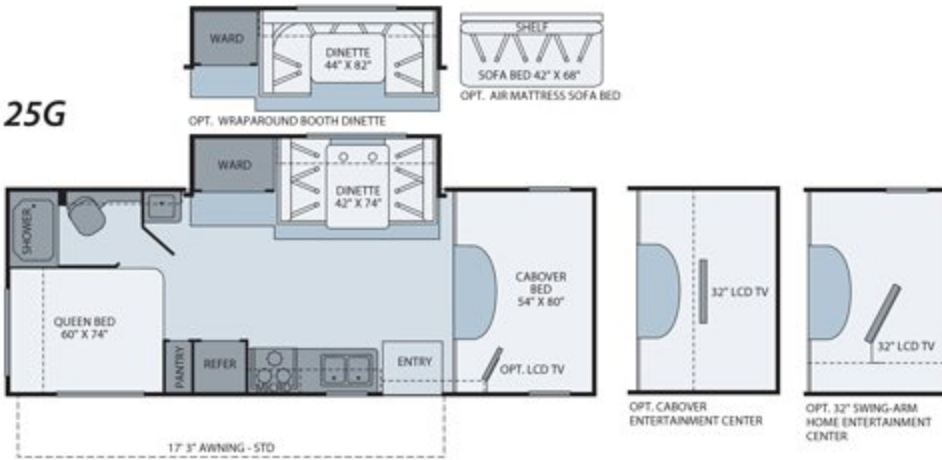
23B



Interior Storage Capacity: 79 cu. ft.
Exterior Storage Capacity: 88 cu. ft.

- Ultra-compact floor plan with all the comforts of home
- Family friendly U-shape dinette

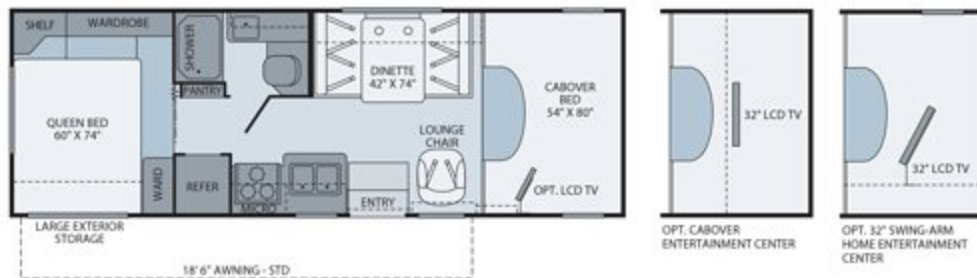
25G



Interior Storage Capacity: 102 cu. ft.
Exterior Storage Capacity: 100 cu. ft.

- Cozy U-shape dinette option
- Lots of interior storage capacity

26Q

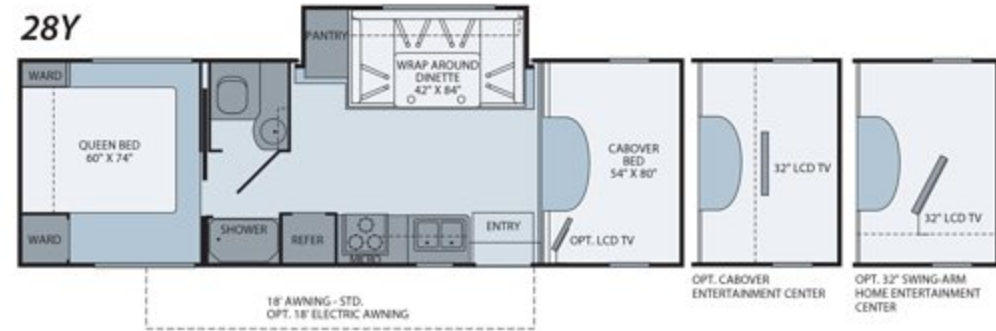


Interior Storage Capacity: 70 cu. ft.
Exterior Storage Capacity: 149 cu. ft.

- Abundant exterior storage with extra large garage
- Compact floor plan with all the comforts of home

Seatbelt configuration may vary depending on options chosen.

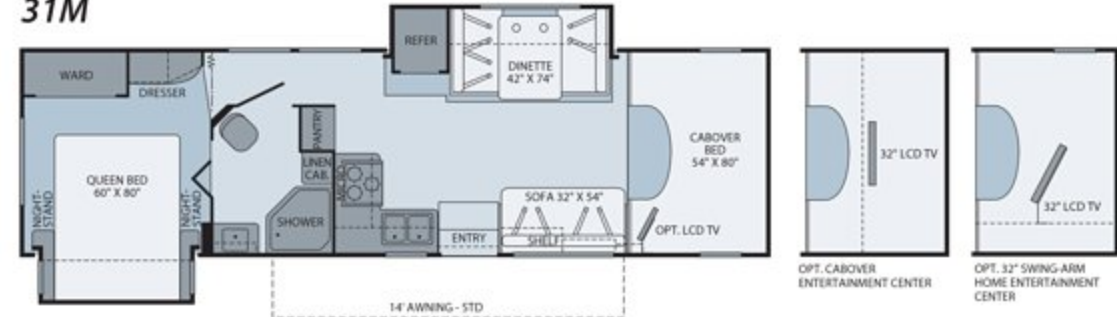
28Y



Interior Storage Capacity: 93 cu. ft.
Exterior Storage Capacity: 144 cu. ft.

- Side aisle space and privacy
- Residential size bathroom

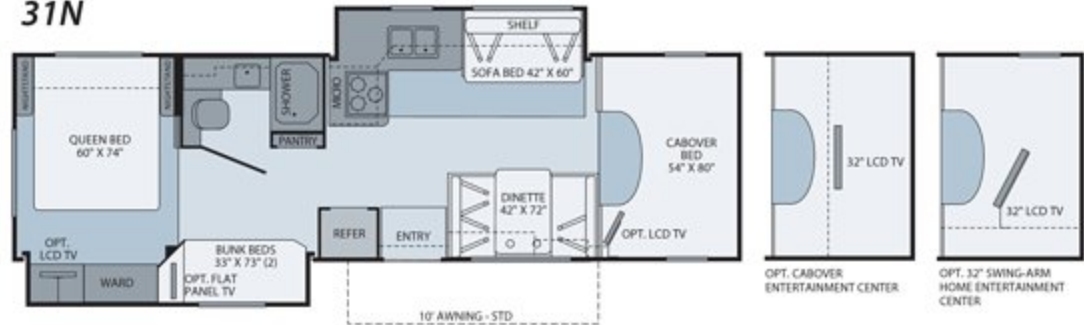
31M



Interior Storage Capacity: 126 cu. ft.
Exterior Storage Capacity: 102 cu. ft.

- Side aisle space and privacy
- Residential size bathroom

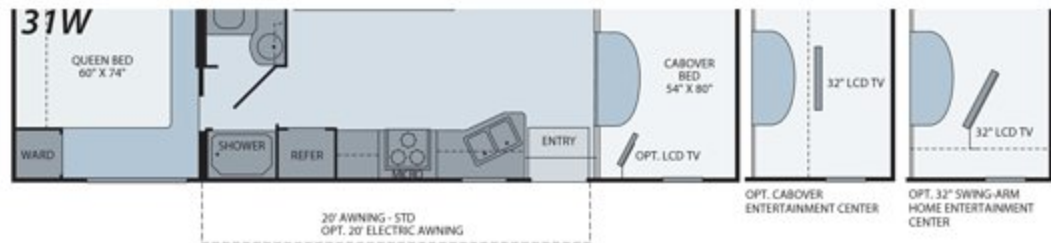
31N



Interior Storage Capacity: 119 cu. ft.
Exterior Storage Capacity: 104 cu. ft.

- Spacious master suite with additional bunk beds
- Living room slide-out creates ready-to-entertain area

31W



Interior Storage Capacity: 77 cu. ft.
Exterior Storage Capacity: 113 cu. ft.

- Spacious master suite with additional bunk beds
- Living room slide-out creates ready-to-entertain area

TIOGA/JAMBOREE
31W
Model Yr. 2010
7/13/09

STANDARD FEATURES

INTERIOR THROUGHOUT

- Complete TuffPEX Plumbing System
- 12V Water Pump, Demand Operation
- 13,000 Btu Conventional Air Conditioner (23B, 25G)
- 13,000 Btu Ducted Air Conditioner w/Chill Grille (26Q)
- 15,000 Btu Ducted Air Conditioner w/Chill Grille (28Y, 31M, 31N, 31W)
- 30,000 Btu Furnace, Wall Mounted Thermostat
- Dual 20,000 Btu Furnaces (31N)
- 6 Gallon Propane Water Heater w/Electronic Ignition
- Hardwood Raised Panel Cabinet Doors
- Hidden Cabinet Door Hinges
- Auxiliary Battery w/Disconnect Switch
- Deluxe Roller Bearing, Full Extension Drawer Guides & Transit-Ship Locks
- Water Pump with On/Off Switches at Galley & Lavvy
- Quality Constructed Furniture by Flexsteel®
- Water Heater Bypass Valve Fresh Water System Winterization
- Central Monitor Panel
- GFI Circuit Protection
- Pleated Night Shades in Living Room & Bedroom
- AC/DC Load Center w/12V Converter/Battery Charger
- Pre-Finish Lined Shelves in Overhead Cabinets
- Ozite Lined Ceilings

DRIVER CONVENIENCE

- 3 Point Seat Belts at Driver & Front Passenger Seats
- Auxiliary Emergency Start Assist Switch on Dash
- In-Dash AM/FM/Radio w/CD Player & 4 Speakers
- Power Windows & Door Locks
- 54" X 80" Cabover Bed w/Privacy Curtain, Roof Vent & Sliding Side Windows
- Cabover Bunk Ladder
- Driver/Front Passenger Airbag Supplemental Restraint System
- Cockpit Area w/Tilt Wheel, Cruise Control, Dome Light, Cup Holders, Map Pocket

LIVING ROOM

- Ceiling Lights w/Wall Switches (Entry & Bath)
- Swivel Reading Lights at Sofa Overhead
- Dinette w/2 Cup Holders, Convertible for Sleeping & Hinged Seat w/Strut for Easy Storage Access (Select Models)
- Sofa Bed (Select Models)
- Swivel Base Lounge Chair w/Dual Lock Position (26Q)

GALLEY

- Range w/High Output/Piezo Igniter & Oven
- Decor Wall Border
- Dometic® 6 cu. ft. Refrigerator/Freezer
- Microwave Oven w/Electronic Touch Pad
- Gloss Black Refer Inserts
- Range Hood w/Light & Fan
- Residential Size Double Bowl Sink
- Whole Coach Water Filtration System
- Cooktop Cover
- Laminate Countertops w/Bull Nose T-Molding Edge
- Power Roof Fan-Tastic® Vent Fan

BEDROOM

- Bedspread w/Reverse Pillow Shams
- Wall Space for TV w/AC Receptacle & Cable Jack
- Decorative Reading Lights
- Queen Bed w/Innerspring Mattress (Select Models)

BATHROOM

- Bath Door w/Residential Passage Lock and Towel Bars (Select Models)
- China Bowl Toilet w/Hand Sprayer
- Medicine Cabinet w/Wood Construction
- Shower Head w/Flexible Hose Extension
- Skylight/Roof Vent w/12V Fan
- Wall Mounted Mirror (Select models)
- Molded ABS Shower/Tub with Surround
- Residential Style Faucet w/Large Sink
- Shower Curtain with oversized curtain rod
- Shower Clothes Rod (Select Models)

EXTERIOR THROUGHOUT

- High Gloss Tuff-Coat® Smooth Fiberglass Exterior

- Lg. 1" (Inside Diameter) Water Tank Drain
- Sewer Hose Storage in Bumper
- Debris Awning Above All Slide-Out Rooms
- Trailer Hitch w/7 Pin Electrical Hook-Up†
- Stainless Steel Wheel Simulators
- Dual 6V Deep Cycle Auxiliary Batteries
- Onan® 4.0kW MicroQuiet Generator
- Patio Awning
- Full Size Spare Tire w/Carrier
- Rear Ladder
- Toilet Tank San-T-Flush™ System
- Wash Unit w/Faucet, Flexible Shower Hose
- Power Double Electric Step
- Side Fuel Fill
- Roto-Molded Polyethylene Luggage Compartments (Where Applicable)

BODY STRUCTURE

- One-Piece Molded Fiberglass Front End Cap
- Vacu-bond® Hull Lamination Process
- Vacu-bond® Floor
- Royal Tuff-Ply Radius Roof with Ducted A/C
- Sidewalls Framed with 1 1/2" Aluminum Tubing
- Corrosion Resistant Aluminum Tube Hull Framing
- Molded Rear Wheel Trim Flares
- Steel Powder Coated Rear Bumper
- Powder Coated, Steel Running Boards
- 26" Wide Radius Corner Entry Door w/Obscured Window
- Full Basement Exterior
- Pass Through Storage

STORAGE

- Molded Cross Link Polyethylene Battery Compartment w/lid

SAFETY & CONVENIENCE

INTERIOR

- 10 ABC Fire Extinguisher
- Carbon Monoxide Detector/Alarm
- Exterior & Interior Entry Assist Handle
- Propane Detector/Alarm
- Smoke Detector/Alarm
- Multiple Seatbelt Locations

EXTERIOR

- 30 Amp, 30' Power Cord, Compartment Storage
- AC Duplex GFI Receptacle on Patio Side
- Amber Porch Light w/Interior Switch
- Automotive Safety Glass
- Breakaway Side Mirrors w/Power Adjust & Heat Control
- Entry Door w/Screen Door & Deadbolt Lock
- High Mounted Large Taillights
- Hydraulic 4 Wheel Disk Brakes w/4 Wheel Anti-Lock Brakes
- Power Electric Step
- Radius Tinted Windows

OPTIONS

INTERIOR

- Upgraded Vinyl Flooring
- 19" LCD Wide-Screen TV w/Remote & DVD Player
- Satellite Radio
- 19" LCD TV (Bedroom)
- Cabover Entertainment System: 32" LCD TV w/Home Theater
- 32" Swing-Arm Home Entertainment Center
- Sofa Sleeper w/Air Mattress (Select Models)
- Real Wood Raised Panel Refrigerator Inserts
- Glass Shower Door Enclosure (Select Models)
- Dual Flat Panel TV Package
- Sofa Bed w/Air Mattress (25G)
- Wrap Around Booth Dinette (25G)

EXTERIOR

- Full Body Paint
- Dual Pane Windows
- Holding Tank Heater
- Rear Vision Camera
- Exterior Entertainment Center with AM/FM/CD Player and Auxiliary Speaker, Coax Cable and 12V/110 Receptacles
- Midi Heki Skylight- Sunroof w/Screen & Pull shade
- Clear Front Protective Mask

FORD® E450 CHASSIS							
MODELS	23B	25G	26Q	28Y	31M	31N	31W
Engine Displacement (Liters)	6.8	6.8	6.8	6.8	6.8	6.8	6.8
Wheelbase (Inches)	158"	176"	176"	198"	218"	214"	214"
GVWR (lbs) ¹	14,500	14,500	14,500	14,500	14,500	14,500	14,500
Front GAWR (lbs) ²	5,000	5,000	5,000	5,000	5,000	5,000	5,000
Rear GAWR (lbs) ²	9,500	9,500	9,500	9,500	9,500	9,500	9,500
GCWR (lbs) ³	19,500	19,500	19,500	19,500	19,500	19,500	19,500
Hitch Rating Weight (lbs) ⁴	5,000	5,000	5,000	5,000	5,000	5,000	5,000
Tongue Weight (lbs) ¹	500	500	500	500	350	350	350
Fuel Capacity (gal)	55	55	55	55	55	55	55

DIMENSIONS & CAPACITIES							
MODELS	23B	25G	26Q	28Y	31M	31N	31W
Overall Length ⁴	24' 4.5"	26' 2.5"	27' 4.5"	29' 2.5"	32' 5.5"	31' 8.5"	31' 7.5"
Overall Height (with A/C)	11' 5 3/4"	11' 5 3/4"	11' 5 3/4"	11' 5 3/4"	11' 5 3/4"	11' 5 3/4"	11' 5 3/4"
Overall Width (maximum) ^{5,6}	102"	102"	102"	102"	102"	102"	102"
Interior Height (maximum)	82"	82"	82"	82"	82"	82"	82"
Interior Width (maximum)	96"	96"	96"	96"	96"	96"	96"
Fresh Water Holding Tank (gal)	50	50	60	50	35	60	60
Grey Water Holding Tank (gal)	36	37	32	37	35	35	37
Black Water Holding Tank (gal)	36	36	38	37	35	35	36
Water Heater Tank (gal)	6	6	6	6	6	6	6
Appliance Propane Tank (gal) (WC) ⁷	14	14	14	14	14	14	14

CHASSIS	LIQUID WEIGHT REFERENCE	METRIC CONVERSION
Model: Ford® E450 Engine: 6.8L Triton V10 Transmission: 5-Speed Automatic w/Overdrive	Water (gal) = 3.8kgs Fuel (gal) = 2.8 kgs Propane (gal) = 1.9 kgs	Multiply pounds x 0.453 to obtain kilograms. Multiply gallons x 3.785 to obtain liters. Multiply liters x 61 to obtain cubic inches.
Alternator Amps: 115 Amp Torque: 420 lb-ft @ 3250 RPM Horsepower: 305HP		

WHY FLEETWOOD?



Quality

There's no cutting corners. Skilled craftsmen build every Fleetwood RV for maximum durability and longevity.



Trust

More people trust Fleetwood. After all, we've spent the last 60 years perfecting RVs, earning the loyalty of generations of RVers.



Passion

We're truly passionate about the RV lifestyle. Fleetwood was founded by RV enthusiasts, and that tradition continues today.



Safety

You've got precious cargo. So we've engineered dozens of innovative safety features into our motor homes to give you more peace of mind.



Service

Help is nearby. When you need an upgrade or repair, you'll find Fleetwood dealers all across North America ready to assist you.



Warranty

Exclusive RV ownercare warranty. See your Fleetwood dealer for details.

- GVWR (Gross Vehicle Weight Rating) is the maximum permissible weight of this fully loaded motor home. The GVWR is equal to or greater than the sum of the (UVW) unloaded vehicle weight plus the (OCCC) occupant cargo carrying capacity*.
- GAWR (Gross Axle Weight Rating) is the maximum permissible loaded weight a specific axle is designed to carry.
- GCWR (Gross Combined Weight Rating) is the value specified by the motor home manufacturer as the maximum allowable loaded weight of this motor home with its towed vehicle. Towing and braking capacities may be different. Refer to Fleetwood and chassis manufacturer's manuals for complete information.
- Length measured from front bumper to rear bumper (excludes accessories).
- Excludes safety equipment and awnings.
- Motor homes feature a body-width over 96" which will restrict your access to certain roads. Before purchasing, you should research any state and/ or province road laws which may affect your usage.
- Tank manufacturer's listed water capacity (WC). Actual propane capacity is 80% of water listing as required by the safety code.

- † The chassis manufacturer recommends the installation of a supplemental brake control system to activate the brakes on the vehicle or trailer you are towing. Hitch receiver ratings expressed are maximum for the hitch receiver installed and may require the purchase of additional equipment that is dependent on the weight of the towed load. Consult with hitch receiver manufacturer for further information.
- * UVW and OCCC are found on the label containing the federal certification tag in each RV.

IMPORTANT —PLEASE READ: Product information, photography and illustrations included in this publication were as accurate as possible at the time of printing. For further product information and changes, please visit our website at www.fleetwoodrv.com or contact your local Fleetwood dealer. Prices, materials, design and specifications are subject to change without notice. All weights, fuel, liquid capacities and dimensions are approximate. Fleetwood has designed its recreational vehicles to provide a variety of uses for its customers. Each vehicle features optimal seating, sleeping, storage and fluid capacities. The user is responsible for selecting the proper combination of loads (i.e. occupants, equipment, fluids, cargo, etc.) to ensure that the vehicle's capacities are not exceeded.