

2007

**WINNEBAGO**  
**Sightseer®**



**SIGHTSEER**



WEB

 SMARTSPACE™

29R Linen Moss with Sierra Maple

## Built for You.

The 2007 Sightseer is a Winnebago through and through. So, it's no surprise it's loaded with easy-to-use features and functional design. Choose from six models, each created with our SmartSpace™ design philosophy that makes the most of available space to provide you with a motor home that maximizes usability and comfort. SmartSpace design leads to more usable space, such as front slideout rooms that extend 30 inches on most models. This creates more room for quality Stitchcraft furniture, including a dinette with a child-seat tether. For an extra touch of class, choose the available UltraLeather™ package that includes UltraLeather cab seats, sofa and lounge chair. And for a look that's sure to please, select the premium high-gloss exterior by Vetrolite® and the deluxe exterior graphics package.

When you step into the bedroom, you'll notice a comfy queen-sized mattress (king-size on the 35J); roomy overhead cabinets for ample storage; a mirrored wardrobe; and a bedroom slideout on the 26P, 29R, 34A and 35J.

On the cover: 29R with Dark Titanium Metallic.



29R

## A Life of Luxury.

Kiss the cook in your very own spacious galley, which includes a three-burner range with a pots-and-pans drawer below and a microwave for all your cooking needs. And when you select the galley upgrade, you'll receive a range cover, wood-grain refrigerator door facade, silverware tray and wire storage baskets under the dinette seats.

The Sightseer will keep you entertained with the standard 24-inch TV. For the ultimate entertainment experience, add the Home Theater Sound System, which includes a DVD player, amplifier, receiver, five speakers and a subwoofer. Choose the 300-watt inverter and you can watch TV without generator or shoreline power.

The hoop-base lounge chair swivels and glides, and can be positioned in your favorite spot when you're not traveling.

You can easily adjust your level of privacy when you select the available day/night pleated shades.

Gain greater climate control by adding available features such as dual-glazed, thermo-insulated windows; and a heat pump that takes the chill off without starting the furnace.

**WEB** Select a Key Feature

The **WEB** icon designates a Winnebago Industries Key Feature. For further in-depth information and photos, use the Search Window or click on the Key Features page at [winnebagoind.com](http://winnebagoind.com).



30B Ember Glow with Portsmouth Oak



### OnePlace® Systems Center.

*Frequently used gauges and controls are conveniently placed in one place for easy access.*

### PowerLine®

*The PowerLine® energy management system monitors electrical usage and automatically cycles appliances on and off to prevent power overloads.*



### Drawer Slides.

*Full-extension slides allow drawers to fully extend for easy access to pots and pans.*



### TrueLevel™

*Eliminate the guesswork when it comes to tank levels with our exclusive TrueLevel holding tank monitoring system. It incorporates detector cells that determine liquid levels from outside the tank. No probes mean no more corrosion or clogging, just accurate readings, time after time.*

## Drive Comfort. Drive the 2007 Sightseer.

The Sightseer makes driving easy and comfortable by placing switches, gauges and controls at your fingertips. The available rearview monitor provides added peace of mind when backing and maneuvering. Choose the available side view camera system for even more confidence. To make trips more pleasant, high-back driver and passenger seats offer lumbar support and adjustments that swivel, slide and recline to suit your style. Both are available in UltraLeather.

The RV Radio® includes AM/FM stereo; CD player; weather band; and large, easy-to-use buttons and knobs. The RV Radio comes with two remotes — one handheld and one on the steering wheel for added convenience. Upgrade your RV Radio with the available Sirius® Satellite Radio package. Sirius brings you 120 channels of crystal clear programming and a free six-month subscription. (Sirius Radio Package not available in Canada.)

Once you've settled on a campsite, use our exclusive three-position hydraulic leveling system to quickly level your Sightseer.

An included hitch lets you tow up to 5,000 pounds and comes with a seven-pin connector.



### Dash

A steering wheel remote and a handheld remote provide convenient controls for the RV Radio while you drive or relax. The video camera system is activated by your turn signals and allows the driver to view the side of the coach through the available rearview monitor.



### Exterior Service Center.

Connections and controls use color-coded labels for easy identification. The QuickPort® service connection hatch is fast and simple, allowing the bay door to close while hookups are attached. The available wash station is great for quick cleanups, while heated holding tanks and a winterization valve let you extend the camping season.



### Rear Storage.

The 30B and 33T feature a large, rear storage compartment that you can access from the rear or right sidewall — perfect for larger items.



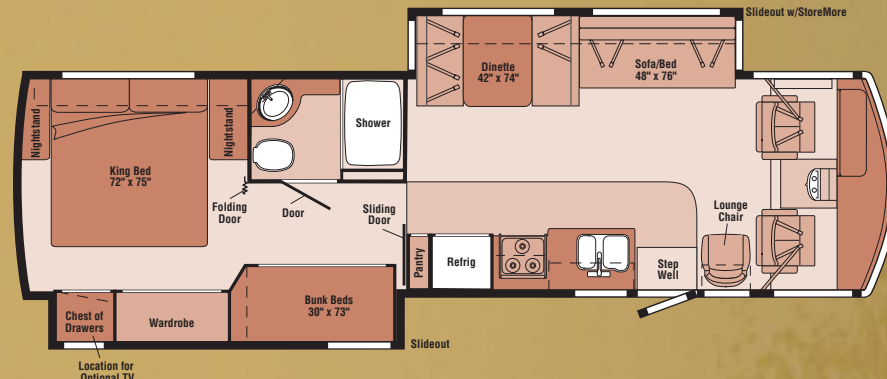
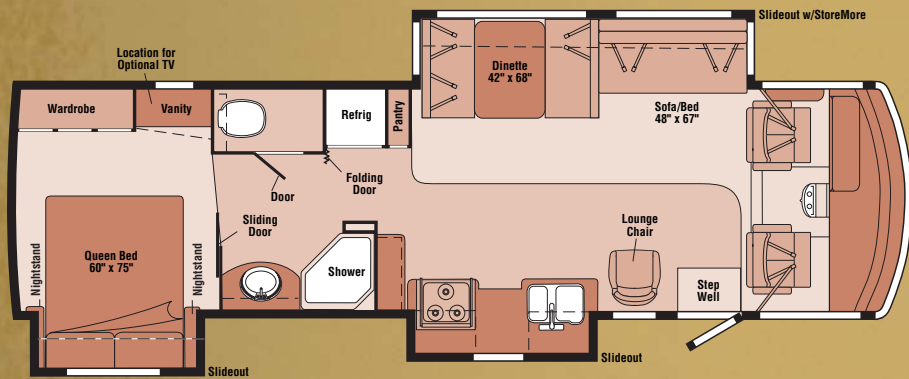
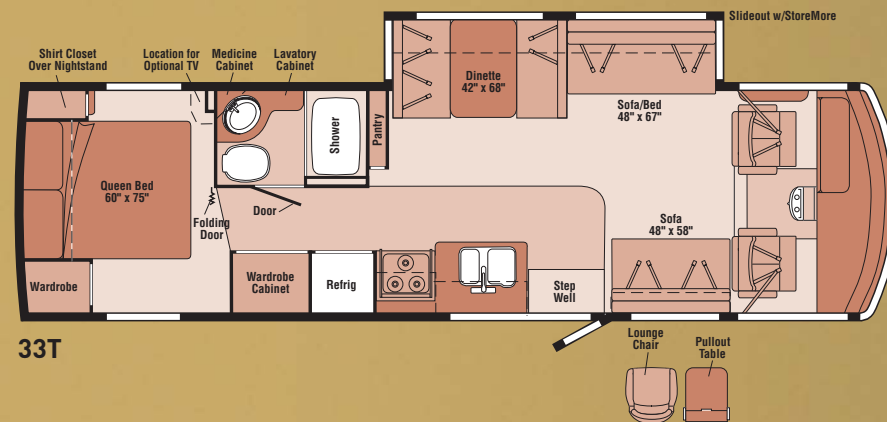
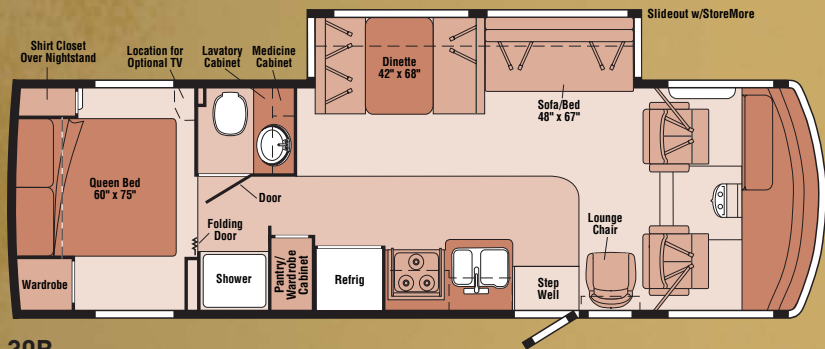
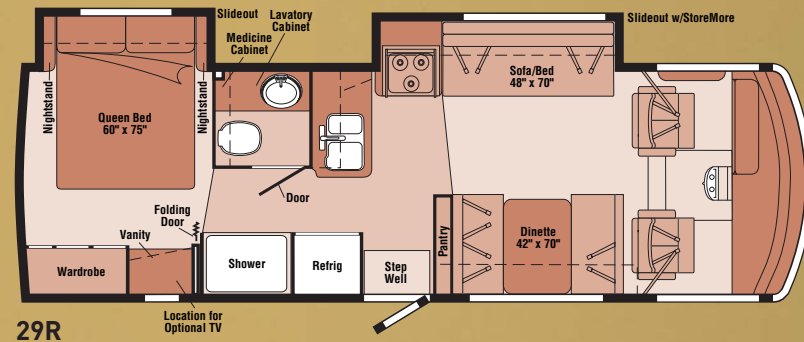
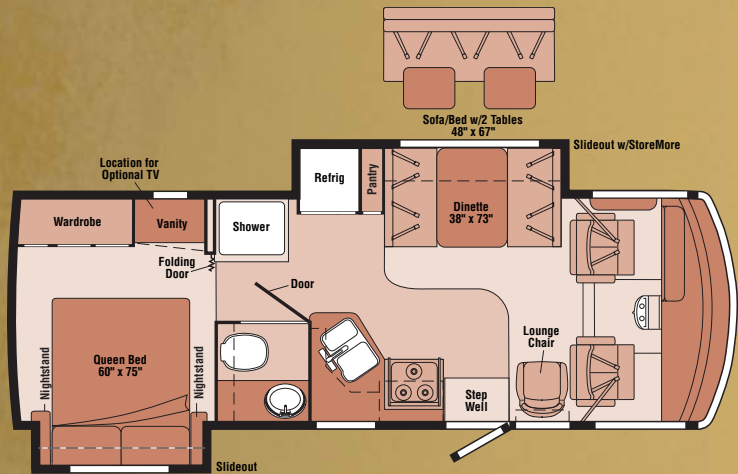
### Hydraulic Leveling Jacks.

New for 2007, our exclusive three-position hydraulic jack controls. Operate your hydraulic jacks from the driver's seat, entrance door or, if you're already outside, from the service center. Leveling your motor home has never been more convenient.



### StoreMore®.

No more crawling on your hands and knees, thanks to our exclusive slideout system that allows exterior compartments to extend with the slideroom for easy storage access. The large StoreMore compartments accommodate bulky, oversized items.



Carpet
  Vinyl Floorcovering
  Seat Belts

Note: Dimensions shown are for sleeping space only and may vary due to styling differences. Dashed lines denote overhead storage areas.



Ember Glow



Gingersnap



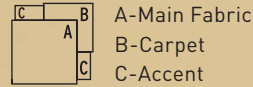
Linen Moss



Portsmouth Oak



Sierra Maple



Standard Graphics



Medium Parchment with Green/Charcoal/Gold



Medium Parchment with Burgundy/Brown/  
Dark Cherry/Moss Green

Available Deluxe Graphics



Dark Titanium Metallic



Metallic Gold

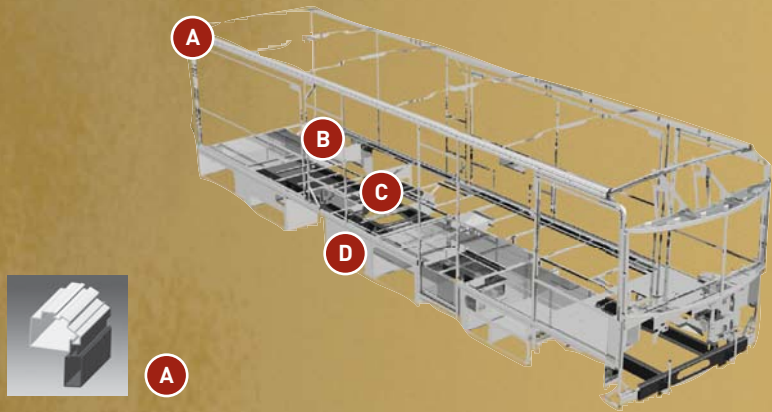
WEIGHTS & MEASURES	26P	29R	30B	33T	34A	35J NEW
Length	26'11"	29'8"	31'	33'11"	34'6"	35'2"
Exterior Height <sup>1</sup>	12'1" <sup>C</sup>	12'1" <sup>A</sup> /12'3" <sup>D</sup>	12'2" <sup>A</sup> / 12'2" <sup>D</sup>	12'3" <sup>B</sup> / 12'3" <sup>D</sup>	12'3" <sup>B</sup> / 12'3" <sup>E</sup>	12'3" <sup>B</sup> / 12'3" <sup>E</sup>
Exterior Width <sup>2</sup>	8'5.5"	8'5.5"	8'5.5"	8'5.5"	8'5.5"	8'5.5"
Exterior Storage <sup>3</sup> (cu. ft.)	67.3	81.2	126.2	104.8	98.9	107.5
Awning Length	11'6"	16'	16'	18'	18'	14'
Interior Height	6'8"	6'8"	6'8"	6'8"	6'8"	6'8"
Interior Width	8'5"	8'5"	8'5"	8'5"	8'5"	8'5"
Freshwater Capacity w/ Heater <sup>4</sup> (gal.)	67	75	74	74	72	72
Holding Tank Capacity <sup>4</sup> - Black/Gray (gal.)	39/36	37/41	41/57	41/57	41/57	44/48
LP Capacity <sup>5</sup> (gal.)	18	18	18	18	18	18
Fuel Capacity (gal.)	60	75	75	75	75	75
GCWR <sup>6</sup> (lbs.)	22,000 <sup>C</sup>	26,000 <sup>A</sup> /22,000 <sup>D</sup>	26,000 <sup>A</sup> /22,000 <sup>D</sup>	26,000 <sup>B</sup> /22,000 <sup>D</sup>	26,000 <sup>B</sup> /26,000 <sup>E</sup>	26,000 <sup>B</sup> /26,000 <sup>E</sup>
GVWR (lbs.)	16,000 <sup>C</sup>	18,000 <sup>A</sup> /18,000 <sup>D</sup>	18,000 <sup>A</sup> /18,000 <sup>D</sup>	20,500 <sup>B</sup> /18,000 <sup>D</sup>	20,500 <sup>B</sup> /20,700 <sup>E</sup>	20,500 <sup>B</sup> /20,700 <sup>E</sup>
GAWR - Front (lbs.)	6,500 <sup>C</sup>	7,000 <sup>A</sup> /7,000 <sup>D</sup>	7,000 <sup>A</sup> /7,000 <sup>D</sup>	7,500 <sup>B</sup> /7,000 <sup>D</sup>	7,500 <sup>B</sup> /7,500 <sup>E</sup>	7,500 <sup>B</sup> /7,500 <sup>E</sup>
GAWR - Rear (lbs.)	10,500 <sup>C</sup>	11,000 <sup>A</sup> /12,000 <sup>D</sup>	11,000 <sup>A</sup> /12,000 <sup>D</sup>	13,500 <sup>B</sup> /12,000 <sup>D</sup>	13,500 <sup>B</sup> /13,500 <sup>E</sup>	13,500 <sup>B</sup> /13,500 <sup>E</sup>
Wheelbase	159"	190"	190"	208"	228"	228"

Standard - S	Optional - O	26P	29R	30B	33T	34A	35J
<b>AUTOMOTIVE/CHASSIS</b>							
<b>A - Ford®</b> 6.8L SOHC Triton® V10 362-hp, Torqshift™ 5-speed automatic overdrive transmission, hydraulic brakes, 4-wheel ABS, 130-amp. alternator			S	S			
<b>B - Ford</b> 6.8L SOHC Triton V10 362-hp, Torqshift 5-speed automatic overdrive transmission, hydraulic brakes, 4-wheel ABS, 130-amp. alternator					S	S	S
<b>C - Workhorse™</b> W-Series 8.1L Vortec V8 340-hp, 4L85-E 4-speed overdrive transmission, hydraulic brakes, 4-wheel ABS, 145-amp. alternator		S					
<b>D - Workhorse</b> W-Series 8.1L Vortec V8 340-hp, 4L85-E 4-speed overdrive transmission, hydraulic brakes, 4-wheel ABS, 145-amp. alternator			0	0	0		
<b>E - Workhorse</b> W-Series 8.1L Vortec V8 340-hp, Allison® 6-speed overdrive transmission, hydraulic brakes, 4-wheel ABS, 145-amp. alternator						0	0
<b>Trailer Hitch®</b> 5,000-lb. drawbar/500 lbs. maximum vertical tongue weight & wiring w/7-pin connector, <b>Wheelcovers (4)</b>		S	S	S	S	S	S
<b>Leveling Jacks</b> hydraulic, automatic controls w/remote, 1-touch system, Kwikkee®, <b>Wheel Liners</b> stainless steel		0	0	0	0	0	0
<b>CAB AREA &amp; DRIVER CONVENIENCES</b>							
<b>Beverage Holder</b> passenger side, <b>Cab Seats (Fabric)</b> w/3-point shoulder & lap seat belts w/retractors, armrests, lumbar support (fixed), multiadjustable slide/recline & swivel, <b>Convenience Tray</b> w/cupholders, <b>Cruise Control</b> , <b>Map Lights</b> , <b>Map Pocket</b> , <b>Powerpoint 12-volt DC/Cigarette Lighter</b> , <b>Receptacle</b> AC duplex, <b>Steering Wheel</b> tilt w/power-assist, <b>Trim Panel</b> driver side w/cupholder, storage tray, <b>Window</b> (driver & passenger) partial slider w/screen, <b>Windshield Wipers</b> intermittent		S	S	S	S	S	S
<b>Cab Seats</b> UltraLeather™, <b>Defroster Fans (2)</b> auxiliary 2-speed w/instrument panel switch, <b>Monitor System</b> rearview b/w w/single camera & 1-way audio, Audiovox®, <b>Video Camera System</b> side-mounted cameras		0	0	0	0	0	0
<b>ENTERTAINMENT</b>							
<b>RV Radio® (Cab)</b> AM/FM stereo/CD, speakers (4), weather band, remotes (2) handheld and steering wheel mounted, <b>C.B. Wire Prep</b> , <b>Radio Antenna</b> roof-mounted, rubber, <b>Radio Power Switch</b> main/aux. battery, <b>Satellite System Ready</b> , <b>TV 24"</b> color AC stereo w/remote (front cabinet), <b>TV Enhancement Package</b> antenna (amplified), 12-volt DC powerpoints, interior jacks, exterior jack, coax wiring, cable input, splitter, <b>Video Selection System</b>		S	S	S	S	S	S
<b>DVD</b> w/remote, <b>Entertainment Center (Exterior)</b> w/CD player, DC receptacle, AC duplex receptacle, AM/FM radio, radio antenna, speakers (2), lockable compartment, removable TV table, <b>Satellite Radio</b> Sirius® antenna, wiring, receiver, includes 6-month subscription (NA Canada), <b>Satellite Dish Antenna</b> RV digital, manual, <b>Home Theater Sound System</b> amplifier, DVD, receiver, recessed speakers (5), subwoofer		0	0	0	0	0	0
<b>DVD w/7" LCD Screen (2)</b> bunk area, headphones, remotes and AV ports							0
<b>TV 13"</b> color DC w/remote (bedroom), shelf				0	0		
<b>TV 19"</b> color AC w/remote (bedroom)		0	0			0	0
<b>INTERIOR</b>							
<b>Blinds</b> mini (lounge, dinette, & galley), <b>Ceiling</b> fabric, <b>Countertops</b> laminate, <b>Curtain</b> wraparound w/track (front), <b>Lights</b> reading, adj. halogen (overheads), <b>Lights</b> (ceiling) incandescent w/wall switches, <b>Roof Vent</b> non-powered (lounge), powered (bath), <b>Shades</b> pleated (bedroom), <b>Telephone Input</b> interior jack (bedroom or dinette area)		S	S	S	S	S	S
<b>Wainscoting w/Chair Rail</b>		S		S	S	S	S
<b>Roof Vent</b> powered, ventilator fan, lounge, <b>Shades</b> day/night pleated (lounge, dinette, & bedroom), <b>UltraLeather Upgrade Package</b> cab seats, sofa, lounge chair, <b>Windows</b> dual-glazed/thermo-insulated/flush-mounted		0	0	0	0	0	0
<b>FURNITURE</b>							
<b>Dinette</b> w/access to storage below, cupholders		S	S	S	S	S	S
<b>Sofa</b> w/storage below, tables (2), shelves behind sofa (2)		0					
<b>Sofa(s)</b> w/storage below, throw pillow(s)			S	S	S	S	S
<b>Sofa(s) (Driver's Side)</b> w/storage below, UltraLeather					0		
<b>Lounge Chair</b> hoop-base, swivel/glider, cabinet w/table, magazine rack					0		
<b>Lounge Chair</b> hoop-base, swivel/glider		S		S		S	S
<b>GALLEY</b>							
<b>Countertop</b> w/flip-up extension (NA on 34A) <b>Faucet</b> single-control, Moen®, <b>Microwave Oven</b> , <b>Pantry</b> , <b>Range Hood</b> vented w/light & fan, <b>Range Top</b> 3-burner w/pot & pan drawer, <b>Receptacle(s)</b> duplex, <b>Refrigerator/Freezer</b> double-door		S	S	S	S	S	S

- The height of each model is measured to the top of the tallest standard feature and is based on the curb weight of a typically equipped unit. The actual height of your vehicle may vary by several inches depending on chassis or equipment variations. Please contact your dealer for further information.
- Sightseer floorplans feature a wide-body design – over 96 inches. In making your purchase decision, you should be aware that some states restrict access on some or all state roads to 96 inches in body width. Before making your purchase decision, you should confirm the road usage laws in the states of interest to you.
- The load capacity of your motor home is designated by weight, not by volume, so you cannot necessarily use all available space when loading your motor home.
- Capacities are based on measurements prior to tank installation. Slight capacity variations can result due to installation applications.

Standard - S	Optional - O	26P	29R	30B	33T	34A	35J
<b>Galley Upgrade Package</b> range cover, silverware tray, raised-panel refrigerator door insert, dinette storage wire baskets, <b>Microwave/Convection Oven</b> , <b>Range</b> 3-burner (1 high-output) w/oven		0	0	0	0	0	0
<b>BATH</b>							
<b>Cabinets</b> lavatory, medicine, <b>Faucet (Lavatory)</b> dual-control, <b>Faucet (Shower)</b> dual-control w/flexible showerhead, <b>Light</b> shower, <b>Shower Door</b> textured glass, <b>Shower Skylight</b>		S	S	S	S	S	S
<b>BEDROOM</b>							
<b>Bedsread</b> pillow shams, pillows, throw pillow, <b>Lights</b> decorative wall lamps		S	S	S	S	S	S
<b>Bed</b> queen, Serta® innerspring w/underbed storage		S	S			S	
<b>Bed</b> queen, Serta innerspring, <b>Headboard</b>				S	S		
<b>Bed</b> king, innerspring w/underbed storage							S
<b>Bunk Beds</b> w/drawer below, privacy curtain, mattress cover, pillows & shams, storage pockets							S
<b>EXTERIOR</b>							
<b>Awning Rails</b> w/rain gutters, <b>Door</b> entrance w/separate screen door, deadbolt lock, <b>Entrance Door Steps</b> double, electric w/doorjamb switch, <b>Exterior Light</b> porch w/interior switch, <b>Fuel Fill Door</b> , <b>Mirrors</b> manual adjust w/convex, <b>Mudflaps</b> front, <b>Receptacle</b> AC duplex (passenger side storage compartment w/QuickPort®), <b>Sidewall Skin</b> 1-piece smooth fiberglass, <b>Storage Compartments</b> valance panels, gas strut, single-paddle latch, lights, trunk liner, TriMark® KeyOne™ System (NA large rear storage door on 30B and 33T)		S	S	S	S	S	S
<b>Awning</b> patio, <b>Ladder</b> , <b>Mirrors</b> electric/remote w/defrost, <b>Sidewall Skin</b> premium high-gloss Vetrolite®		0	0	0	0	0	0
<b>SYSTEMS</b>							
<b>HEATING/AC - Automotive Heater/Air Conditioner</b> blend air system		S	S	S	S	S	S
<b>Air Conditioner</b> (roof) 14,800 BTU, ceiling-ducted w/wall thermostat, <b>Furnace</b> 30,000 BTU, low-profile, ducted, in-floor, <b>Generator</b> 4,000-watt, Onan® MicroQuiet™, gas		S	S	S			
<b>Air Conditioners (2)</b> (roof) high-efficiency ceiling-ducted w/wall thermostat, includes <b>PowerLine®</b> energy management system, <b>Generator</b> 5,500-watt, Onan® Marquis Gold™, gas					S	S	S
<b>Furnace</b> 35,000 BTU, low-profile, ducted, in-floor					S		
<b>Furnace</b> 40,000 BTU, low-profile, ducted, in-floor						S	S
<b>Air Conditioner w/Heat Pump</b> (roof) 14,800 BTU, ceiling-ducted w/wall thermostat		0	0	0			
<b>Air Conditioners w/Heat Pump (2)</b> (roof) high-efficiency ceiling-ducted w/wall thermostat, includes <b>PowerLine</b> energy management system,					0	0	0
<b>Inverter</b> DC/AC, 300-watt		0	0	0	0	0	0
<b>ELECTRICAL - Auxiliary Start Circuit, Batteries (2) (Coach)</b> Group 24 deep-cycle, <b>Battery (Coach)</b> disconnect system, <b>Dual Battery</b> charge control, <b>Electrical Distribution System</b> AC breakers, DC fuses, 45-amp. converter/charger (26P, 29R, & 30B only), AC & DC breaker panels, 45-amp. converter/charger (33T, 34A, & 35J), <b>Generator Prep Kit</b> , <b>OnePlace® Systems Center</b> wall-mounted, energy management display (33T, 34A, & 35J only), battery condition gauge, generator hourmeter gauge, generator start/stop switch, heating & A/C thermostat, holding tank levels, LP tank level, water heater lights, water heater switch, water pump switch, water tank level, <b>Power Cord</b> 30-amp		S	S	S	S	S	S
<b>PLUMBING - Service Center</b> city water hookup/tank diverter fill, drainage valves, QuickPort® service connection hatch, cable TV input, power cord, portable satellite hookup, sewer hose 10', telephone input, <b>Tank</b> holding, heated compartment, <b>Tank LP</b> , permanent mount w/gauge, <b>TrueLevel™ Holding Tank Monitoring System</b> , <b>Water Heater</b> 6-gallon, electronic ignition, LP gas, <b>Water Pump</b> demand, <b>Water System Winterization Package</b> bypass valve water heater, siphon tube		S	S	S	S	S	S
<b>Wash Station</b> exterior w/pump switch located in service center, <b>Water Heater</b> 6-gallon, electronic ignition/110 VAC/LP w/motoraid & aux. auto heater, includes energy management system (26P, 29R, 30B)		0	0	0	0	0	0
<b>SAFETY</b>							
<b>Assist Handle</b> exterior, <b>Assist Bar</b> interior, <b>Bumpers</b> front & rear, <b>Child-Seat Tether Anchor</b> , <b>Detectors/Alarms</b> LP leak, smoke, carbon monoxide, <b>Fire Extinguisher</b> 10 BC, <b>Ground Fault Interrupter</b> , <b>Brakelamp</b> high-mount, <b>Seat Belts</b> cab, 3-point, <b>Seat Belts</b> lap (in selected areas), <b>Window</b> escape, <b>Windshield</b> laminated safety glass		S	S	S	S	S	S
<b>WARRANTY*</b>							
<b>12-month/15,000-mile basic warranty</b> ‡ <b>36-month/36,000-mile limited warranty on structure</b> ‡ <b>10-year limited parts &amp; labor warranty on roof skin</b> ‡		S	S	S	S	S	S

- Capacities shown are tank manufacturer's listed water capacity (W.C.). Actual filled LP capacity is 80% of listing due to overfilling prevention device on tank.
- Actual towing capacity is dependent on your particular loading and towing circumstances, which includes the GVWR, GAWR and GCWR, as well as adequate trailer brakes. Please refer to the Operator's Manual of your vehicle for further towing information.
- See separate chassis warranty details.
- See your dealer for complete warranty information.
- Not all items available in combination. See dealer for details. NA - Not Available.
- Winnebago Industries' continuing program of product improvement makes specifications, equipment, model availability and prices subject to change without notice. Comparisons to other motor homes are based on the most recent information available.

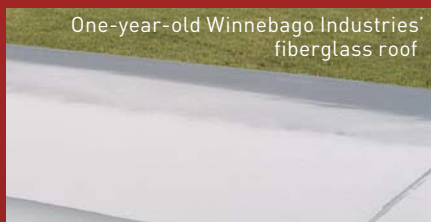


SUPERSTRUCTURE® is the term given to Winnebago Industries' structural motor home design and construction. Rather than a single component, it is the culmination of design integration that incorporates steel and aluminum substructures; welded tubular steel floor risers; interlocking joint technology; and Thermo-Panel® floor, roof and sidewalls to form a high-strength, durable vehicle body.

Thermo-Panel manufacturing combines a durable exterior panel with welded aluminum support substructures. The substructures are embedded in a high-density, block-foam insulation core to create a strong, durable, yet lightweight sidewall. Just another Winnebago Industries invention.

The all-steel cab features integral A and B pillars for added strength and stability. Steel also separates the occupants from the engine compartment. Believe it or not, less advanced designs may use wood in this critical application.

- A** Interlocking joint construction utilizes advanced extruded aluminum structural components to create integrated floor-to-sidewall and sidewall-to-roof joints. This design effectively distributes the weight of the walls and roof, making a stronger and more durable body than competitor designs that rely on screws to carry the weight.
- B** The foundation substructure assembly is precision-aligned to maximize strength and cross-coach support as well as durability.
- C** Tubular steel risers feature a truss-design core for improved strength and provide a stable base for the floor structure and storage compartments.
- D** Critical steel components are treated using an advanced electrodeposition coating process that provides superior corrosion protection.



One-year-old Winnebago Industries' fiberglass roof



One-year-old competitor's rubber roof

#### BUILT TO A HIGHER STANDARD.

The 2007 Sightseer features a crowned, one-piece fiberglass roof skin backed with a 10-year limited parts-and-labor roof skin warranty. Fiberglass offers superior strength, attractiveness and durability compared to rubber roofs found on many competitive models. Over time, rubber roofs are susceptible to chalking, streaking and degradation, and have less puncture and tear resistance than fiberglass.



**Take a Tour** We're proud of our process, our state-of-the-art facilities and the people who make Winnebago Industries number one. We invite you to visit our factory in Forest City, Iowa, for a firsthand look at the dedication and technology behind every motor home we build.



**Recognized Quality** The Recreation Vehicle Dealer Association annually rates RV manufacturers and awards the Quality Circle award to manufacturers who provide exceptional products, service and support. Winnebago Industries is proud to be the only manufacturer to receive this award every year since its inception.



**Committed to Service** We back our motor homes with the industry's best service after the sale.

- 12-month/15,000-mile basic limited warranty
- 36-month/36,000-mile limited warranty on structure
- Standard 10-year limited parts-and-labor roof skin warranty
- Complimentary 24-hour roadside assistance program
- TripSaver Fast Track Parts. TripSaver guarantees that in-stock warranty parts ship directly to your dealer within 24 hours.
- National dealer service network



**WIT Club** Winnebago owners are like family. Joining the Winnebago-Itasca Travelers is a great way to meet and travel with other Winnebago enthusiasts. Members enjoy:

- Caravans and rallies
- Local and state group activities
- RV travel benefits



**Visit the Web** Visit us on the Web for more information on all of our motor homes and a host of Web-exclusive content. [winnebagoind.com](http://winnebagoind.com)



For Sales and Service Information Contact:

Built proudly by



NYSE listing: WGO