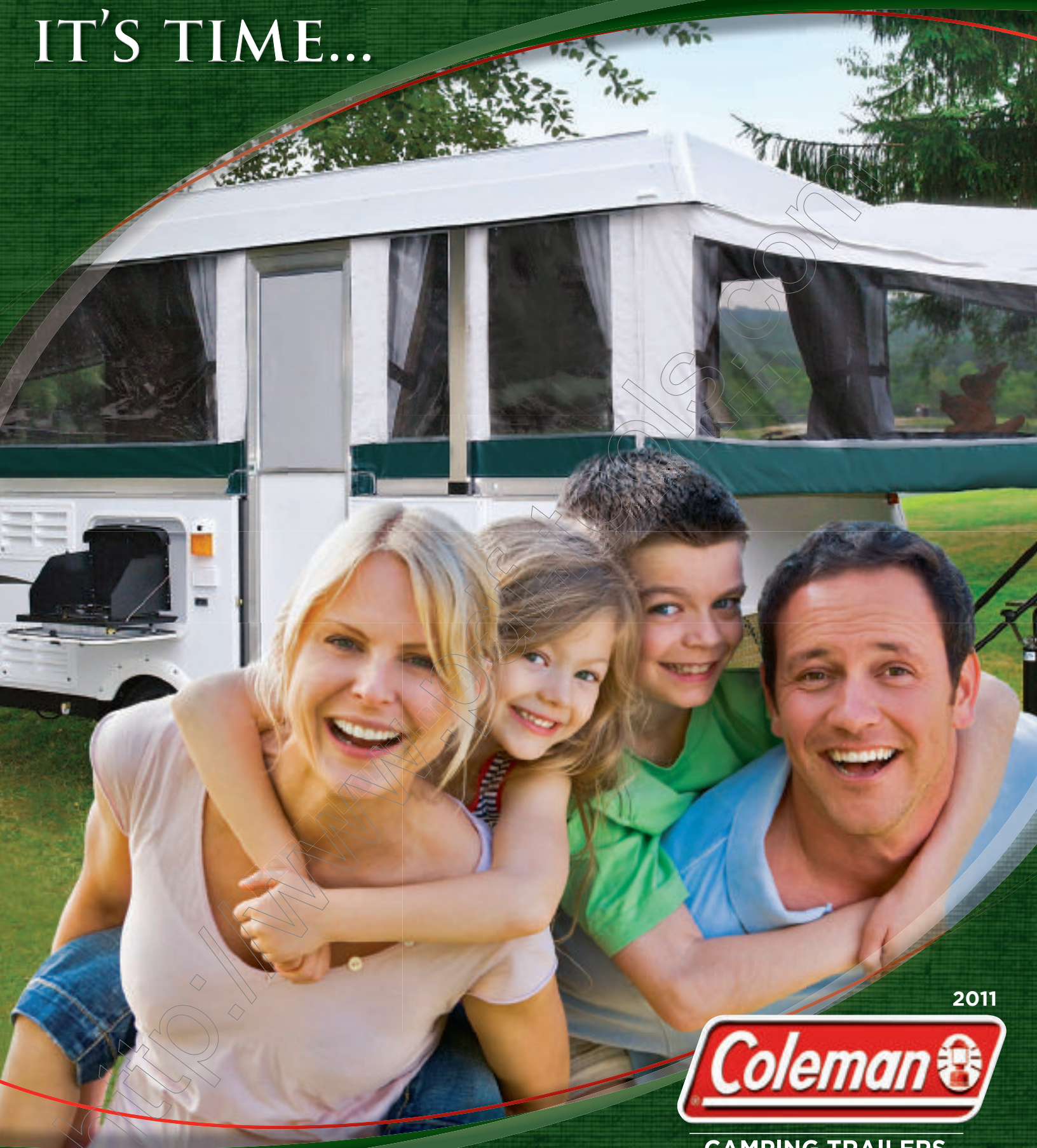


IT'S TIME...



2011



CAMPING TRAILERS

FOR FRESH AIR, FREEDOM AND FUN

IT'S TIME FOR A

COLEMAN® CAMPING TRAILER

We take extraordinary pride in our innovative design and quality automotive construction. With five different series of trailers, each offering varying models, *you're sure to find a COLEMAN® CAMPING TRAILER that's right for you!*

IT'S TIME FOR FRESH AIR, FREEDOM AND FUN

For more than 40 years, Coleman® Camping Trailers have been providing **FRESH AIR, FREEDOM** and **FUN** to millions of campers worldwide.

With the exclusive, sectionalized, breathable Sunbrella 302® tenting material — that will not mildew, rot or fade, and clear windows with screens made of the finest mesh material available, *you'll discover the **FRESH AIR** experience* and enjoy the unobstructed 360° views available in every Coleman® Camping Trailer built.

The gold standard in the industry, a Coleman® Camping Trailer allows you the **FREEDOM** to travel whenever and wherever you want to go — worry free. Top-notch quality automotive construction assures that Coleman® Camping Trailers are built to last and can go just about anywhere you want to take them. They are the only folding camping trailers made with full tubular steel frame construction and the exclusive Posi-Lock™ lift system — with posts bolted directly to the trailer's frame, and independent stainless steel cables for each lift post.

Whether you're planning *an invigorating fresh-air adventure* in the mountains, *a free-and-easy retreat* to the beach or an *event-filled family vacation*, Coleman® Camping Trailers are the vehicles that allow you to *have **FUN** and create memories that will last a lifetime.*

IT'S TIME FOR COMFORT AND CONVENIENCE

Coleman® Camping Trailers are created to be your home-away-from-home. They include many of the everyday **COMFORTS** and **CONVENIENCES** *that you are accustomed to in one foldable package.* The exquisite décor and thoughtfully designed floor plans include everything from suede-backed window and bed privacy curtains — made of high-quality designer fabrics — to upholstered seat cushions and seat backs that are just as functional and durable as they are beautiful. Coordinating wood laminated cabinets, in rich cherry or warm ash finishes, define the interior space.

Most Coleman® Camping Trailers also include refrigerators, two- or three-burner stoves, hot water heaters and furnaces, as well as oversized, 77-inch, comfort-engineered, hypoallergenic, mattresses — with no hard metal springs — to ensure you get a great night's sleep. Many models also include a bathroom and dressing area, for added privacy and convenience.

IT'S TIME FOR SIMPLICITY AND EASE

Coleman® Camping Trailers are *the **SIMPLEST** folding camping trailer to set up and take down.* The entire process can take less than 10 minutes. The exclusive Posi-Lock™ lift system is user-friendly and it can't be over-cranked. The unique independent lift cable design allows the top to be *raised or lowered with **EASE*** — even if one of the lift cables malfunctions. The BackSaver bed support system allows for easy set up without bending or stooping.

Coleman® Camping Trailers are lightweight and fold to a compact size, making them **EASY to maneuver, tow and store.** Coleman® Camping Trailers can be stored in practically any garage and can be towed by a wider variety of vehicles than most heavier travel trailers of similar size with similar features.*

* Garage and trailer sizes vary. Measure your garage and check the trailer specifications before you purchase a Coleman® Camping Trailer. Also check the maximum towable weight limit of your towing vehicle in your towing vehicle's owner's manual.

THE COLEMAN® CAMPING TRAILER ADVANTAGE

North America's #1 folding camping trailer and the most trusted name in the business!

Sectionalized marine-quality Sunbrella 302® tenting is durable and requires no treatments. Sunbrella 302® will not fade, mildew or rot like cotton or canvas tenting.



Sunbrella 302® tenting is breathable and stays fresh. It won't trap heat and moisture that leaves a musty odor like vinyl or coated materials can.

Sunbrella 302® tenting is strong, yet lightweight and it won't shrink or stretch. It always fits perfectly.

Clear windows with screens made of the finest mesh netting available allow for clear 360° views while natural light flows into the camping trailer.

Posi-Lock™ lift system with stainless steel posts bolted directly to the frame to create superior structure.

Posi-Lock™ lift system stainless steel posts that will not corrode or bind are designed to channel water to the ground and do not require tent flap covers for protection from rain.



Aircraft-grade, stainless steel cables, independent for each lift post, allow the top to be raised and lowered even if a lift cable malfunctions.



Posi-Lock™ lift system is user-friendly and can not be over cranked and there is no kick back.

Automotive-quality construction with a heavy-gauge tubular steel chassis and 12-step, E-coated, heavy-gauge tubular steel frame that uses no wood, glue or staples and meets strict military specifications.

Extra wide 24.5 inch, one-piece, self-storing screen door. (The widest in the industry.)



Strong, durable Structurwood® floors and bed platforms that won't warp, buckle or delaminate.

High quality, comfort-engineered, hypoallergenic, polyester fiber mattresses are comfortable and quiet with no hard, metal springs.



Attached, self-storing bed support legs and the BackSaver bed support system allow for easy setup without bending or stooping.

Rest in total comfort on extra-large 77 inch beds (6 ft. 5 in.).

Sunbrella 302® tenting is permanently attached to the ends of the bed platforms' durable, full-perimeter aluminum bed rails for easier setup and increased safety.

Suede-backed window and bed privacy curtains made of high-quality designer fabrics.

Patented, no-spill, swing level galleys are easy to use and items stored inside remain in place.



Coleman CAMPING TRAILERS

OTHER BRANDS

✓	X
✓	X
✓	X
✓	X
✓	X
✓	X
✓	X
✓	X
✓	X
✓	X
✓	X
✓	X
✓	X
✓	X
✓	X
✓	X



THE HIGHLANDER SERIES

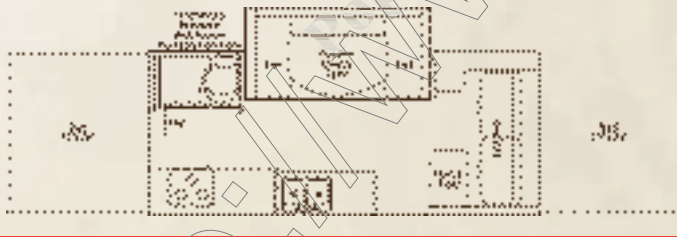
The Highlander series high-side wall trailers are the most luxurious of the Coleman® Camping Trailers. This series is designed for the camper who loves the fresh air experience and appreciates all the comforts of home.

With its factory-installed power lift, residential-style galley, and the easiest above-floor glide-out dinette system in the industry, set up is almost effortless. The solid-walled bathroom, with a changing area and residential-style ceramic, flushable commode offers added comfort and convenience.

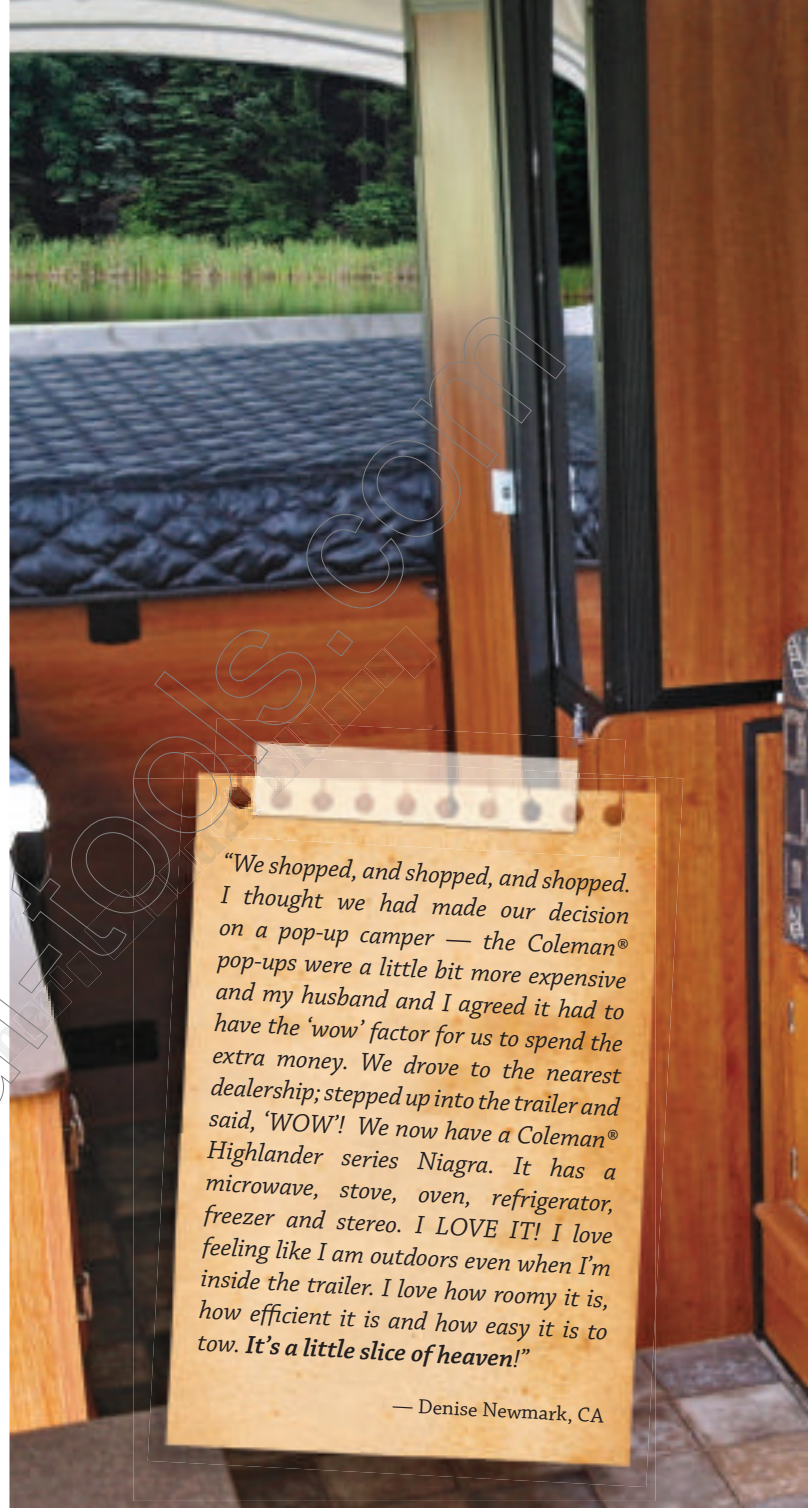
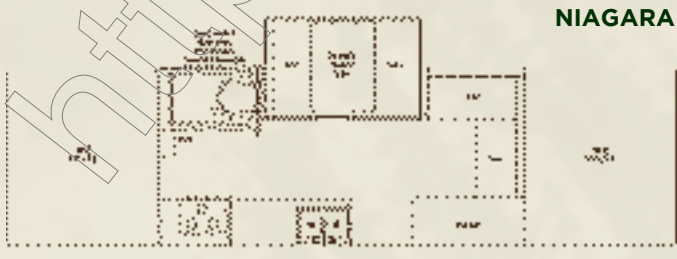
You can't take your kitchen with you, but the Highlander series comes pretty close. With a double-bowl sink, three-burner stove, oven, microwave, 4.5-cubic-foot refrigerator, self-storing high-pressure outdoor stove and a glide-out dinette you're sure to feel right at home.

Storing food, equipment and accessories is no problem. The Highlander series' 4x4 storage bumper, outside storage compartment, exterior access storage compartment and numerous interior cabinets create up to 59 cubic feet of storage space. Plus, clothing remains out of the way and wrinkle-free with the wardrobe hanger included in your Highlander series trailer.

AVALON



NIAGARA



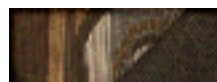
"We shopped, and shopped, and shopped. I thought we had made our decision on a pop-up camper — the Coleman® pop-ups were a little bit more expensive and my husband and I agreed it had to have the 'wow' factor for us to spend the extra money. We drove to the nearest dealership; stepped up into the trailer and said, 'WOW!' We now have a Coleman® Highlander series Niagra. It has a microwave, stove, oven, refrigerator, freezer and stereo. I LOVE IT! I love feeling like I am outdoors even when I'm inside the trailer. I love how roomy it is, how efficient it is and how easy it is to tow. It's a little slice of heaven!"

— Denise Newmark, CA

STANDARD FEATURES

CONSTRUCTION

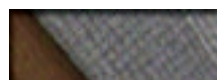
- One-piece, seamless aluminum roof
- Remote-controlled, 12-volt, factory-installed, power lift
- Diamond-embossed front body panel
- Sand shoes
- Posi-Lock™ lift system with individual, aircraft-grade, stainless steel cables for each stainless steel lift post
- Tubular steel frame with bumper
- Full-perimeter aluminum body and bed rails
- One-piece Structurewood floor and bed platforms
- Leaf-spring suspension
- EZ lube axle
- Durable, Krystal Kote finish, body panels
- Extra-wide, one-piece screen door
- Sectionalized, breathable, Sunbrella 302® tenting
- Clear windows with screens made of the finest mesh material available



UPHOLSTERY



CURTAINS



VALANCES AND TIE BACKS



CABINETS



FLOOR



2011 Coleman® Highlander series Niagara model shown.



APPEARANCE

- 7-spoke alloy wheels and chrome lug nuts
- Molded impact-resistant wheel well extensions
- Suede-backed window and privacy curtains made from high-quality designer fabrics
- Foam cushions upholstered with durable high-quality designer fabrics
- Full-perimeter valance in coordinating fabric
- Rich cherry wood laminated cabinets
- Tile-look vinyl flooring

BATHROOM

- Solid-walled bathroom with shower
- Residential-style, flushable, ceramic commode
- Changing room privacy curtain
- Outside shower

KITCHEN

- Three-burner indoor stove with oven
- Self-storing, high-pressure outdoor stove
- Microwave oven

- Two 20 lb. propane tanks with vinyl covers
- 4.5 cu. ft. refrigerator
- Deep double-bowl sink
- Residential-style galley
- Seamless-edged counter tops
- Above-floor, easy glide-out dinette system
- Freestanding carry-out dining table
- Casual seating area

COMFORT AND CONVENIENCE

- Backsaver bed support system
- Extra-large, 77-inch beds (6 ft. 5 in.)
- Quilted, hypoallergenic, comfort-engineered foam mattresses with no hard metal springs
- Convertible dinette bed
- Convertible bench bed (Avalon model)
- Wall step for easier bed access
- 12-volt exterior patio light
- Four indoor/outdoor speakers
- AM/FM-CD stereo with MP3 connections

- 12-volt water pump
- 6-gallon, auto-ignition, water heater
- 16,000 BTU furnace (20,000 BTU furnace in Avalon)

STORAGE

- 4 x 4 storage bumper
- Wardrobe hanger
- Exterior access storage compartment
- 20-gallon under floor fresh water holding tank
- 20-gallon under floor gray water holding tank
- 9-gallon black water holding tank

SAFETY

- Fire extinguisher
- Carbon monoxide detector / alarm
- Propane detector / alarm
- Positive-locking safety chains
- Electric brakes
- Worry-free, shut-off interior lights
- Spare tire
- Vinyl tire cover (Niagara model)

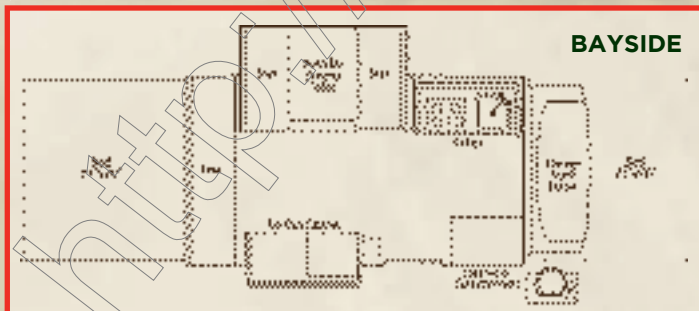
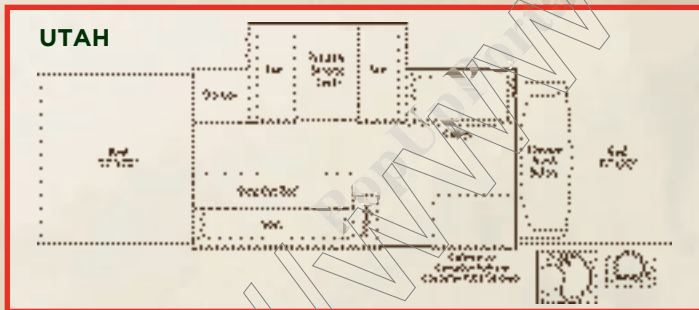


THE AMERICANA SERIES

The Coleman® Americana series offers timeless styling with modern conveniences, including a spacious above-floor glide-out dinette system and an extra-large outdoor storage trunk which allows you to expand your indoor living space while minimizing clutter.

You'll sleep in total comfort on the Americana series' oversized, comfort-engineered, hypoallergenic, quilted mattresses — with no hard metal springs, while the camp chef enjoys creating culinary masterpieces in the abundant kitchen on a three-burner stove, or cooking outside on the convenient high-pressure outdoor stove.

Counter space abounds in the Bayside model with its mirrored, hide-away vanity and spacious tip-out storage cabinet. If extra sleeping space is important to you; you'll love the Utah model's sofa-style seating area that slides-out to create a fourth bed. Plus, make set up even easier, with the practical convenience of a factory-installed power lift in either of the Americana series models.



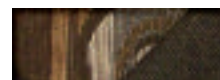
"I really like the front outside storage trunk. It's super handy for keeping the tablecloth, folding chairs, and fire items all in one easy-to-access OUTSIDE place."

— Kara Smith, MI

"I love that we still feel like we're camping. With the windows unzipped, our Coleman® pop-up camper feels so open."

— Brenda Jardon, ME

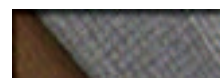
STANDARD FEATURES



UPHOLSTERY



CURTAINS



VALANCES AND TIE BACKS



CABINETS



FLOOR

CONSTRUCTION

- One-piece, seamless, aluminum roof
- Automotive TPO front and rear body panels
- Posi-Lock™ lift system with individual, aircraft-grade, stainless steel cables for each stainless steel lift post
- Tubular steel frame with bumper
- Full-perimeter aluminum body and bed rails
- One-piece Structurewood floor and bed platforms
- Leaf-spring suspension
- EZ lube axle
- Durable, Krystal Kote finish body panels
- Extra-wide, one-piece screen door
- Stepper door with lockable tool cabinet
- Sectionalized, breathable, Sunbrella 302® tenting
- Clear windows with screens made of the finest mesh material available



2011 Coleman® Americana series Bayside model shown.

APPEARANCE

- 7-spoke alloy wheels and chrome lug nuts
- Suede-backed window and privacy curtains made from high-quality designer fabrics
- Foam cushions upholstered with durable, high-quality designer fabrics
- Full-perimeter valance in coordinating fabric
- Rich cherry wood laminated cabinets
- Tile-look vinyl flooring

KITCHEN

- Patented, swing-level, no-spill galley
- Three-burner indoor stove
- High-pressure outdoor stove
- 20 lb. propane tank with vinyl cover
- 1.9 cu. ft. three-way refrigerator
- Deep bowl sink
- Above-floor, easy glide-out dinette system
- Freestanding carry-out dining table
- Casual seating area

COMFORT AND CONVENIENCE

- Backsaver bed support system
- Extra-large, 77-inch beds (6 ft. 5 in.)
- Quilted, hypoallergenic, comfort-engineered foam mattresses with no hard metal springs
- Convertible dinette bed
- Convertible bench bed (*Utah model*)
- 12-volt exterior patio light
- 12-volt water pump
- Outside shower
- 6-gallon auto-ignition water heater
- 16,000 BTU furnace

STORAGE

- 19 cu. ft. exterior storage trunk
- Wardrobe hanger
- 20-gallon under floor fresh water holding tank

SAFETY

- Fire extinguisher
- Carbon monoxide detector / alarm
- Propane detector / alarm

- Positive-locking safety chains
- Electric brakes
- Worry-free, shut-off interior lights
- Spare tire with vinyl cover

Options

- Remote-controlled, 12-volt, factory-installed power lift
- Electric-flush cassette potti
- Cassette potti privacy curtain enclosure
- Cassette potti / shower with 5.3 gallon black water holding tank
- Sand shoes

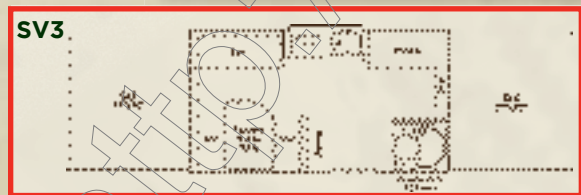
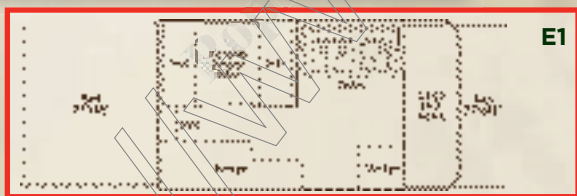


THE EVOLUTION SERIES

Designed for those who crave adventure and yearn to travel off the beaten path, the Evolution series trailers are the most rugged of the Coleman® Camping Trailers. With contemporary looks and off-road capabilities, the Evolution series trailers are a must-have for any outdoor sports or recreation enthusiast.

Built to withstand the harshest terrain with a heavy-duty 6-inch tubular steel main frame, 5-inch steel A-frame, 6-inch powder-coated steel body reinforcements, shock absorbers, 15-inch off-road tires, alloy rims, mud flaps and steel wheel wells the Evolution E1 and E3 models can go just about anywhere your vehicle can tow them.

Outdoor enthusiasts love the E3 model's heavy-duty toy hauler, and the ample storage space and cargo deck that the E1 model offers. Hunters appreciate the compact size of the Cobalt model when traveling to those "hard-to-reach" areas and adventurous families enjoy the SV3 model's thoughtful family-friendly floor plan, which includes extra seating, plus the added convenience of a shower and cassette potti.



"I have an Evolution series camping trailer and I wouldn't trade it for anything. I take it camping, off-road — with the trucks or ATVs, and I take it hunting. Because it pops down easily, it gets in the hard to reach areas and allows me and my wife a great place to rest after the fun."

— Texx Fletch, TX

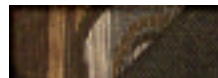
"We have an Evolution Cobalt. It's easy to set up, and easy to tow. We have taken it on camping trips of up to nine days. With air conditioning, heating, and an awning it can handle warm days, cold nights, and inclement weather. People ask about it when we travel. We even had a man get his camera out and take pictures of it."

— Richard Goodwin, TX

STANDARD FEATURES

CONSTRUCTION

- One-piece, seamless, aluminum roof*
- Posi-Lock™ lift system with individual, aircraft-grade, stainless steel cables for each stainless steel lift post
- Diamond-embossed front and rear body panels
- Durable, Krystal Kote finish body panels
- Heavy-duty, 6-inch, tubular steel main frame with 5-inch, tubular steel A-frame (E1 and E3 models)
- Powder-coated steel body reinforcements
- Steel-rimmed and recessed rear lights
- Brush-guarded side and front marker lights*
- Shock absorbers (E1 and E3 models)
- Mud flaps (E1 and E3 models)
- Steel wheel wells*
- Full-perimeter aluminum body and bed rails
- One-piece Structurewood floor and bed platforms
- Leaf-spring suspension
- EZ lube axle
- Extra-wide, one-piece screen door



UPHOLSTERY



CURTAINS



CABINETS



FLOOR



2011 Coleman® Evolution series E1 model shown.



- Double entry step (E1 and E3 models)
- Sectionalized, breathable, Sunbrella 302® tenting
- Clear windows with screens made of the finest mesh material available

APPEARANCE

- 7-spoke alloy wheels and chrome lug nuts*
- 15-inch, off-road, raised white letter tires (E1 and E3 models)
- Molded impact-resistant wheel well extensions
- Diamond-embossed side panel accents*
- Suede-backed window and privacy curtains made from high-quality designer fabrics
- Foam cushions upholstered with durable, high-quality designer fabrics
- Rich cherry wood laminated cabinets
- Tile-look vinyl flooring

KITCHEN

- Patented, swing-level, no-spill galley (E1 and E3 models)
- Tip-out galley (SV3 model)

- 20 lb. propane tank with vinyl cover
- Two-burner indoor stove
- High-pressure outdoor stove (E1 and E3 models)
- 1.9 cu. ft. three-way refrigerator*
- Deep bowl sink (E1 and E3 models)
- Carry-out dining table*

COMFORT AND CONVENIENCE

- Backsaver bed support system (E1 and E3 models)
- Extra-large, 77-inch beds (72 inches in Cobalt)
- Hypoallergenic, comfort-engineered foam mattresses with no hard metal springs
- Convertible dinette bed
- 12-volt exterior patio light
- 12-volt water pump*
- Exterior wash-down station (E1 and E3 models)
- Electric-flush cassette potti and shower (E3 and Sv3 models)
- 6-gallon, auto-ignition water heater*
- 16,000 BTU furnace

STORAGE

- 35-gallon under floor fresh water holding tank (E1 and E3 models)

SAFETY

- Fire extinguisher
- Carbon monoxide detector / alarm
- Propane detector / alarm
- Positive-locking safety chains
- Electric brakes
- Worry-free, shut-off interior lights
- Spare tire with vinyl cover (Cobalt and Sv3 models)
- Spare 15-inch, off-road tire (E1 and E3 models)

Options

- Powered roof vent

* Not included on the Cobalt model. The Cobalt includes a pump faucet, 5-gallon above floor fresh water holding tank and stainless steel sink.

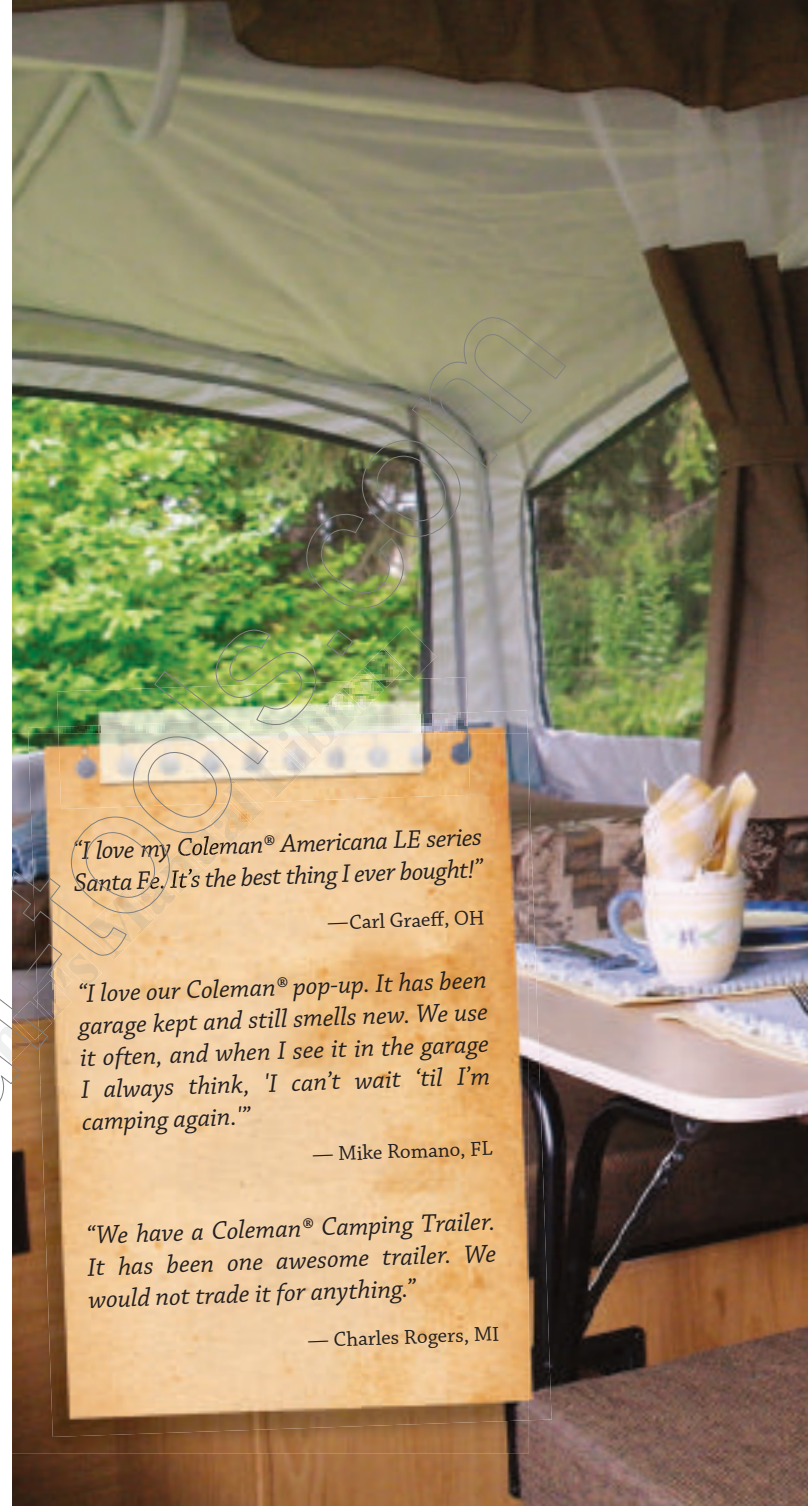
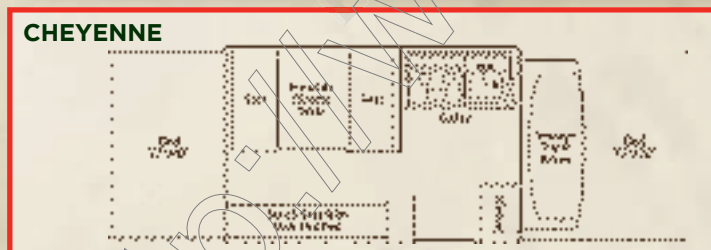
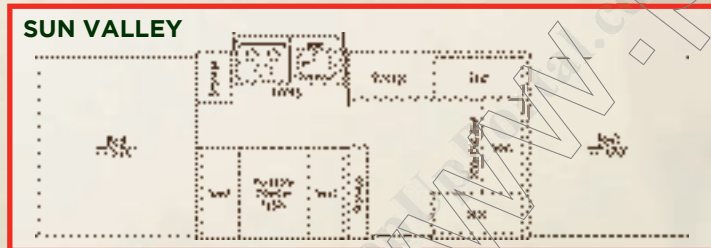


THE AMERICANA LE SERIES

The Coleman® Americana LE series, designed as a more value-oriented version of the Americana series, boasts the same timeless styling as its archetype with many of the same modern conveniences.

You'll find camp cooking a cinch with the Americana LE's indoor/outdoor two-burner stove and an auxiliary galley top that creates extra counter space inside or outside the trailer. Storage is no problem with the Cheyenne model's outdoor storage trunk, or indoor storage cabinets available in the Sun Valley and Santa Fe models.

Sofa-style seating, standard in the Cheyenne and Sun Valley models, converts to create additional sleeping room, while the Santa Fe model offers an abundance of interior storage space. For added convenience, you may choose the Santa Fe with a factory-installed cassette potti.



"I love my Coleman® Americana LE series Santa Fe. It's the best thing I ever bought!"

—Carl Graeff, OH

"I love our Coleman® pop-up. It has been garage kept and still smells new. We use it often, and when I see it in the garage I always think, 'I can't wait 'til I'm camping again.'"

—Mike Romano, FL

"We have a Coleman® Camping Trailer. It has been one awesome trailer. We would not trade it for anything."

—Charles Rogers, MI

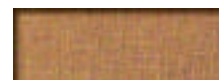
STANDARD FEATURES

CONSTRUCTION

- One-piece, seamless, aluminum roof
- Automotive TPO front and rear body panels
- Posi-Lock™ lift system with individual, aircraft-grade, stainless steel cables for each stainless steel lift post
- Tubular steel frame with bumper
- Full-perimeter aluminum body and bed rails
- One-piece Structurewood floor and bed platforms
- Leaf-spring suspension
- EZ lube axle
- Durable, Krystal Kote finish body panels
- Extra-wide, one-piece screen door
- Stepper door with lockable tool cabinet
- Sectionalized, breathable, Sunbrella 302® tenting
- Clear windows with screens made of the finest mesh material available



UPHOLSTERY



CURTAINS



CABINETS



FLOOR



2011 Coleman® Americana LE series Cheyenne model shown.



APPEARANCE

- Suede-backed window and privacy curtains made from high-quality designer fabrics
- Foam cushions upholstered with durable, high-quality designer fabrics
- Full-perimeter valance in coordinating fabric
- Warm ash wood laminated cabinets
- Tile-look vinyl flooring

KITCHEN

- Patented, swing-level, no-spill galley
- Carry-out indoor / outdoor two-burner stove
- Auxiliary galley top / outdoor shelf
- 20 lb. propane tank with vinyl cover
- 1.9 cu. ft. three-way refrigerator
- Deep bowl sink
- Carry-out dining table
- Casual seating area (*Sun Valley and Cheyenne*)

COMFORT AND CONVENIENCE

- Backsaver bed support system
- Extra-large, 77-inch beds (6 ft. 5 in.)
- Hypoallergenic, comfort-engineered foam mattresses with no hard metal springs
- Convertible dinette bed
- Convertible bench bed (*Sun Valley and Cheyenne*)
- 12-volt exterior patio light
- 12-volt water pump
- Outside shower
- 6-gallon, auto-ignition water heater (optional for *Santa Fe*)
- 16,000 BTU furnace

STORAGE

- 19 cu. ft. exterior storage trunk (*Cheyenne model*)
- 20-gallon under floor fresh water holding tank

SAFETY

- Fire extinguisher
- Carbon monoxide detector / alarm
- Propane detector / alarm
- Positive-locking safety chains
- Electric brakes
- Worry-free, shut-off interior lights
- Spare tire with vinyl cover

Options

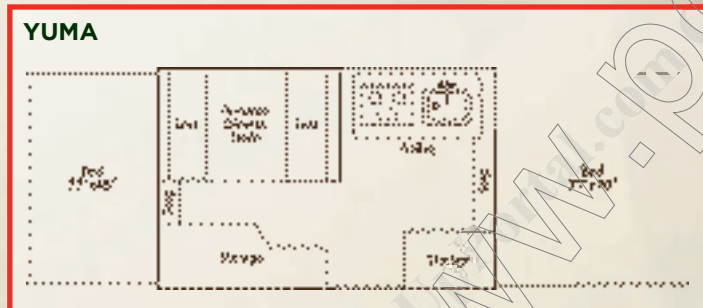
- Electric-flush cassette potti (*Santa Fe only*)
- Cassette potti privacy curtain enclosure (*Santa Fe only*)
- Sand shoes



THE DESTINY SERIES

The Coleman® Destiny series, the most economical of the Coleman® Camping Trailers, is built to last and designed for the uncompromising budget-conscious camper. Innovative design, quality construction and a lower price are attractive features to anyone looking for an affordable option.

With a 2,200 pound gross vehicle weight rating and 8-foot box size classification, the Sedona is the lightest Coleman® Camping Trailer built. The Yuma model weighs in at a svelte 2,400 pounds and offers ample storage space and sleeping area.



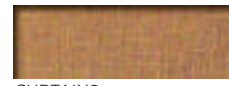
"We love our Coleman® Destiny series Yuma! It was affordable. It's easy to tow, and it's just the right size for us. We keep it 'ready to go' all season and we camp a lot more because of the Yuma, compared to being tent campers. All-in-all, our Coleman® Camping Trailer has been the best purchase we ever made!"

— Debra Summers, GA

"Our first trailer was a Coleman® pop-up. It is bar-none, the best line of pop-up camping trailers on the market — still to this day. No one else in the pop-up camping trailer market even compares to the quality workmanship that Coleman® Camping Trailers puts into its pop-up campers."

— Jeffrey Zimmer, TX

STANDARD FEATURES



- CONSTRUCTION**
- One-piece, seamless, aluminum roof
 - Posi-Lock™ lift system with individual, aircraft-grade, stainless steel cables for each stainless steel lift post
 - Tubular steel frame with bumper
 - Full-perimeter aluminum body and bed rails
 - One-piece Structurewood floor and bed platforms
 - Leaf-spring suspension
 - EZ lube axle
 - Durable, Krystal Kote finish body panels
 - Extra-wide, one-piece screen door
 - Stepper door with lockable tool cabinet
 - Sectionalized, breathable, Sunbrella 302® tenting
 - Clear windows with screens made of the finest mesh material available



2011 Coleman® Destiny series Yuma model shown.

APPEARANCE

- Suede-backed window and privacy curtains made from high-quality designer fabrics
- Foam cushions upholstered with durable, high-quality designer fabrics
- Full-perimeter valance in coordinating fabric
- Warm ash laminated cabinets
- Tile-look vinyl flooring

KITCHEN

- Full storage upper galley compartment
- Indoor two-burner low-pressure stove
- 20 lb. propane tank with vinyl cover
- 1.9 cu. ft. three-way refrigerator
- Stainless steel sink
- Carry-out dining table

COMFORT AND CONVENIENCE

- Hypoallergenic, comfort-engineered foam mattresses with no hard metal springs
- Convertible dinette bed
- Wall step for easier bed access
- Attached bed support system
- Extra-large, 77-inch beds (6 ft. 5 in.)
- 12-volt exterior patio light
- 12-volt water pump
- 6-gallon, auto-ignition water heater (optional for Yuma)
- 16,000 BTU furnace

STORAGE

- 10-gallon under floor fresh water holding tank

SAFETY

- Fire extinguisher
- Carbon monoxide detector / alarm
- Propane detector / alarm
- Positive-locking safety chains
- Electric brakes
- Worry-free shut off interior lights
- Spare tire with vinyl cover

Options

- Outside grill
- Sand shoes

DETAILS

	BOX SIZE	OPEN LENGTH	OPEN WIDTH	CLOSED LENGTH	CLOSED WIDTH	CLOSED HEIGHT	*GVWR (in pounds)	*UVW	*MCC	STORAGE CAPACITY	*WATER CAPACITY
HIGHLANDER											
Avalon	16'	28' 10"	10' 6"	21' 3"	7' 5"	5' 7"	4,600	3,805	795	46 cu. ft.	26 gal.
Nlagara	14'	26' 10"	10' 6"	19' 3"	7' 5"	5' 4"	3,970	3,275	695	59 cu. ft.	26 gal.
AMERICANA											
Utah	12'	25'	11' 9"	19' 2"	7' 5"	4' 6"	3,500	2,680	820	57 cu. ft.	26 gal.
Bayside	12'	25'	11' 9"	19' 2"	7' 5"	4' 6"	3,500	2,655	845	61 cu. ft.	26 gal.
EVOLUTION											
E3	12'	27' 1"	11' 4"	21' 9"	7' 5"	5' 3"	4,400	3,030	1,370	36 cu. ft.	41 gal.
E1	10'	21' 8"	8' 7"	16' 7"	7' 5"	5' 3"	3,500	2,405	1,095	38 cu. ft.	41 gal.
SV3	12'	24' 10"	9' 1"	16' 4"	7' 5"	4' 11"	3,500	2,165	1,335	37 cu. ft.	26 gal.
Cobalt	8'	16' 9"	7' 5"	12' 10"	6' 10"	4' 1"	2,300	1,270	1,030	26 cu. ft.	5 gal.
AMERICANA LE											
Sun Valley	12'	25'	9' 5"	17' 2"	7' 5"	4' 5"	3,500	2,175	1,325	41 cu. ft.	26 gal.
Santa Fe	10'	21' 4"	9' 5"	15' 2"	7' 5"	4' 5"	3,000	1,890	1,110	40 cu. ft.	26 gal.
Cheyenne	10'	21' 4"	9' 5"	17' 2"	7' 5"	4' 5"	3,000	2,140	860	58 cu. ft.	26 gal.
DESTINY											
Yuma	10'	20' 9"	9' 1"	14' 1"	7' 5"	4' 5"	2,400	1,645	755	38 cu. ft.	16 gal.
Sedona	8'	16' 9"	9' 1"	13' 1"	7' 5"	4' 5"	2,200	1,470	730	26 cu. ft.	10 gal.

- GVWR (Gross Vehicle Weight Rating) is the maximum permissible weight of the trailer when fully loaded. It includes all weight at the trailer axle(s) and tongue or pin.
- UVR (Unloaded Vehicle Rating) is the unloaded weight based on the heaviest factory configuration of every model and it does not include accessories.
- MCC (Maximum Carrying Capacity) is determined by subtracting the Gross Dry Weight from the GVWR. The MCC does not include the weight of fresh water, propane or water in the water heater.
- Water Capacity is the water storage capacity including the hot water heater.

ACCESSORIES



Décor Package

Organize your space!

Our décor package includes two Reading Fan/Light Combos, a Camper Caddy with numerous pockets to store clothing and small items, plus the added convenience of a Vanity Mate to store all of your toiletries and personal items.

Create instant shade and expand your living area!

Self-storing Canopies easily attach to your Coleman® Camping Trailer and create instant shade. Add a Screen Room or an Add-A-Room to keep bugs out and expand your living space.



Self-storing Canopy



Screen Room



Add-A-Room

Add storage and convenience!

It's easy to bring along your bicycles, small boat and other outdoor items with our wide selection of Cross Bars and Mounting Kits.

You can also keep your living space organized and clutter-free with our Bed Shelf and Wardrobe Hanger, or generate extra counter space with our molded plastic Sink Cover.



Cross Bars and Mounting Kits



Bed Shelf



Sink Cover



Wardrobe Hanger

The average cost per day of a camping vacation using a folding camping trailer was found to be about **45% LESS EXPENSIVE** than the cost of a comparable car/hotel combination vacation.

SOURCE: PKF CONSULTING

IT'S TIME FOR AN AFFORDABLE OPTION

	3 Days	7 Days	10 Days	14 Days
A Coleman® Camping Trailer Vacation Family traveling in personal car, towing their Coleman® Camping Trailer, staying at campgrounds, and preparing all meals in the Coleman® Camping Trailer or outdoors at campsites.	\$652	\$1,439	\$2,050	\$2,994

A Car/Hotel Combination Vacation Family traveling in personal car, staying at hotels/motels, and eating meals in restaurants.	\$1,052	\$2,684	\$3,876	\$5,358
---	---------	---------	---------	---------

SAVINGS

Camping in a Coleman® Camping Trailer

\$400



You could get four amusement park tickets, lunch, dinner and souvenirs for the entire family!

\$1,245



That's a mortgage payment!

\$1,826



You could buy two, maybe three, new laptop computers and software!

\$2,364



That's a room full of new furniture!

Source: PKF Consulting

All costs are based on estimated costs for a family of four. Items mentioned in cost savings scenario are examples only and costs of items are approximate.



FIND A DEALER

To search for a Coleman® Camping Trailer dealer near you, visit www.ColemanTrailers.com and enter your ZIP code, or click on the "Dealer Locator" tab.

JOIN OUR MAILING LIST

To receive updates, news and our free e-mail newsletter, *Around the Campfire*, visit www.ColemanTrailers.com to sign-up, or click on "The Coleman Advantage" tab and select "Newsletter".

"I really like the attention to details and quality. I like the quality of workmanship, the quality of materials used, the layout, the options available, ease of towability and most of all, the look. Compared to other tent trailers, Coleman® Camping Trailers are the best for all these reasons in my opinion!"

— Robert F. Benko, CAN

FROM OUR FACEBOOK FRIENDS AND FANS!



Photo courtesy of Coleman® Camping Trailer owner Denise Coleman.



Photo courtesy of Coleman® Camping Trailer owner Jenny Hagofsky.



Photo courtesy of Coleman® Camping Trailer owner Rodney Klinebriel.

“Easy towing and easy stowing. I tow my Coleman® pop-up camper with a minivan and store it in the garage. PERFECT!”

— Todd Shaw, MO



Photo courtesy of Coleman® Camping Trailer owner Denise Newmark.



Photo courtesy of Coleman® Camping Trailer owners Jay and Joanne Chiassin.



Photo courtesy of Coleman® Camping Trailer owner James Collum.

IT'S TIME FOR A

COLEMAN® CAMPING TRAILER

THE LEGENDARY QUALITY OF AMERICA'S MOST TRUSTED OUTDOOR BRAND.



CAMPING TRAILERS