



GEARBOX-Toy Haulers-2006

# GearBox

It's what you're into.





**AM/FM STEREO CD AND CD STORAGE CABINET**  
lets you take along the music you like and helps keep it organized.

**LARGE OVERHEAD CABINETS**  
are specifically designed to easily store your belongings, even oversized gear like your full-size riding helmet.



*GearBox S4 260FS shown in Alloy interior decor.*



**THE FOLD-OUT TENT BUNK**  
(optional) is convenient when you need some extra sleeping space. This built-in, easy to use sleeper accommodates two and comes with a retractable overhead light.



**THE ELECTRIC OVERHEAD LOFT BUNK**  
(optional) makes great use of space by providing a comfortable spot to grab some shut-eye.



**THE BEDROOM**  
features a comfortable queen-size sleeper, overhead storage for clothing, towels or gear and a TV cabinet for some entertainment (available on front bedroom models, TV not included).



**THE FULL FEATURED BATHROOM**  
incorporates a full-size sink, removable baskets for easy loading and unloading of toiletries, a convenient laundry hamper for dirty clothes, a full shower and a towel rack just like home.



## Base Camp

Whatever you're into, wherever you go and whatever you do, GearBox® is the ultimate activity support vehicle, serving as the perfect complement for your favorite adventures whether you're riding the trails, cruising the sand dunes, or fishing that perfect stream. Think of GearBox as your own personal base camp where you go to recharge and fuel up for the next activity; and we've taken GearBox even a step further with two new special

editions. The Motorsports Edition caters to the extreme desert explorer, designed so you can keep all your favorite toys tuned up with features like a convenient indoor and outdoor workbench. Are you into fishing and hunting? Check out the Sportsman Edition with integrated fishing pole holder and heavy-duty outerwear hangers to store your waders. So stock up, grab your gear and hold on tight; GearBox has you covered.

*Photos in this brochure are of the S4 product, not all features shown are standard or available on the S2.*



### THE GALLEY SINK

makes food prep and clean-up a breeze thanks to a spacious double bowl and high profile faucet.

### THE ROLL-AWAY SOFA

(optional) is very versatile, able to be positioned to face the outside or the inside of your GearBox. It easily converts into a comfortable area for sleeping.



### THE GALLEY

is full of features to make your adventures simple including a refrigerator to store perishables, a range and a microwave for quick meals and the convenience of an integrated knife and spice rack.



### THE DINETTE WITH PEDESTAL TABLE

converts into a bed so there's no need to sacrifice family meals for the extra space.

**THE ICE MAKER** (optional) is great for hosting tailgate parties, or icing down the trout on your way home, this dedicated ice maker does not use up your freezer space.



**CENTRALIZED CONTROLS** provides a convenient location for switches and gauges so you don't have to go searching for the right button.



### 2-WAY RADIOS AND CHARGER

(optional) you'll be able to maintain contact with your family and friends whether your trip takes you out in the wilderness or to a local campsite (includes 4 walkie-talkies and a charging station).



**THE EXTERIOR AWNING**  
is retractable and provides protection from the rain or sun, extending your outside living area. (optional on S2, standard on S4)

**THE RAMP DOOR**  
is rated at 2,500 lbs and has a beavertail departure angle and non-skid ramp surface to aid in easy loading of your favorite toys.



**THE SPOT LIGHT**  
(optional) allows you to shed some light on your campsite at night.

**THE ROOF LADDER**  
allows you to easily access the roof for cleaning or to get a better view of your surroundings.

**THE 12V POWER JACK**  
(optional) allows you to easily adjust the level of your GearBox without any tiresome lever cranking.

GearBox S4 shown with Bad Blue exterior graphics and Motorsports Edition Package.



**THE SCREEN ROOM**  
(optional) lets you bring the outdoors inside and gain valuable living space with this room addition that stows away when not in use.



**THE RVQ EXTERIOR BARBECUE**  
(optional) connects directly to a low pressure propane system so you can grill up your favorite meals without the messy hassle of charcoal.



**EXTERNAL KENWOOD® MARINE SPEAKERS**  
(optional on S2, standard on S4 ) provide great sound so you can listen to your favorite music or sports while you're outside enjoying the surroundings.

**THE FUELING STATION**  
(optional) enables you to refuel your toys or top off your tow vehicle's fuel tank (available with 18 and/or 30-gallon tanks).



**THE POWER WINCH**  
(optional) has the strength to hoist heavier toys right into your GearBox with ease.



**THE AIR COMPRESSOR**  
(optional) provides a 125 PSI system (including a 3 gallon reservoir air tank, hose, nozzle and gauge), so you always have air for your tires.





## GEARBOX S4 MOTORSPORTS EDITION

Set yourself even further apart from the typical toy hauler crowd with the all new Motorsports Edition option package. This package comes complete with high quality, popular "add-on" features, as well as the new Alloy interior and unique graphic identification.



**THE FRONT CAP**  
includes a convenient place for fuel cell storage and a heavy duty roof ladder.



**THE INTERIOR WORK BENCH**  
is perfect for fixing and fine-tuning equipment and conveniently folds away when not in use.



**THE EXTERIOR WORK BENCH**  
is ideal when you're outside working on your toys.



**THE RAMP DOOR EXTENSION**  
is a diamond plate panel that covers the lip on the ramp door, making it even easier to load quads or motorcycles.



**THE RIDING GEAR STORAGE SHELF**  
provides the perfect place for two helmets and has both a slotted rack and a bar to store jerseys or chest protectors.

## GEARBOX S4 SPORTSMAN EDITION

The Sportsman Edition is perfect for the hunter or fisherman; designed with unique graphics, camouflage interior decor and special features to aid you in the great outdoors whether you're out on the river or deep in the wilderness.



**THE SPORTSMAN EXTERIOR GRAPHICS**  
are inspired by the outdoors. Large, off-road chrome wheels allow you to access remote places no matter where you are.



**THE DINETTE**  
gives you plenty of room to prepare all of your gear for a day of hunting or fishing, while the camouflage decor helps you blend into your surroundings.



**THE HEAVY DUTY OUTERWEAR HANGERS**  
are strong enough to store those fishing waders after you've caught your limit.



**THE INTEGRATED FISHING ROD HOLDER**  
is designed to keep your poles secure and out of the way. Stores up to 5 fishing poles.



**THE WOOD RACK**  
is a great feature so you can bring along plenty of wood for the evening campfire.

## Travel Trailer Floor Plans

### To Our Customers

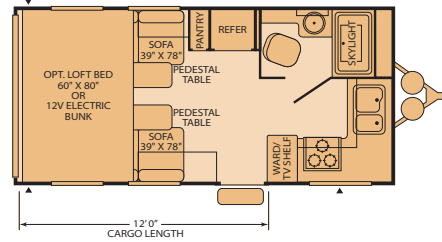
To make sure that you get the maximum satisfaction out of your recreational vehicle purchase, there are several things you should know:

1. Learn all you can about the travel trailer or fifth wheel you're planning to buy. Don't rely on word of mouth. Get the facts about the actual trailer length, width, unloaded weight with options, Gross Vehicle Weight Rating, and cargo carrying capacity. These are usually available in the manufacturer's sales literature or from the Cargo Carrying Capacity Label located in each trailer. Be sure to check this information **before** you decide which unit to buy.
2. Verify the towing capacity of your tow vehicle. If you don't know, or aren't sure, you can ask at your automotive dealership. Be sure to match its tow rating to the loaded (not dry) weight of your trailer. Include the weight of water, additional accessories, clothing, food, and gear. To help Fleetwood travel trailer customers estimate this total weight, our Gross Vehicle Weight Ratings reflect the maximum weight of the trailer when fully loaded for camping. Be sure the weight of the tow vehicle plus the weight of your trailer do not exceed the Gross Combined Weight Rating of the tow vehicle.

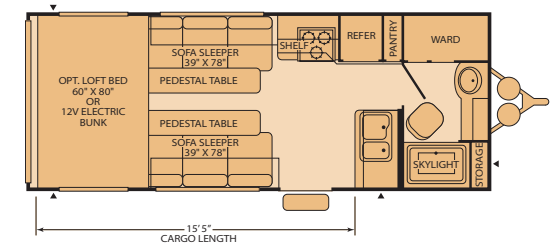
Taking these simple steps before you buy will help ensure that your trailer and tow vehicle combination is just what you wanted.

Happy Camping!

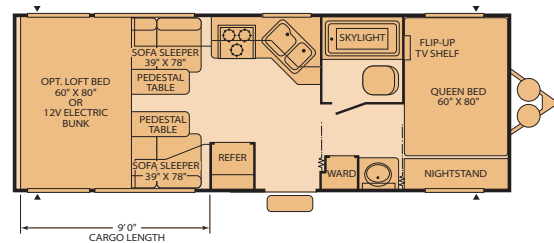
**180FK**  
Sleeps: 4-6



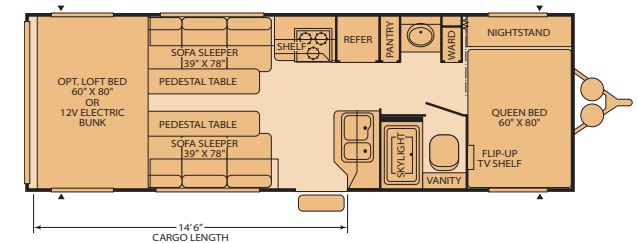
**220FB**  
Sleeps: 4-6



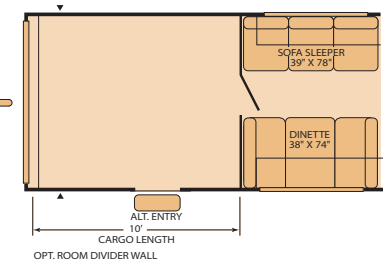
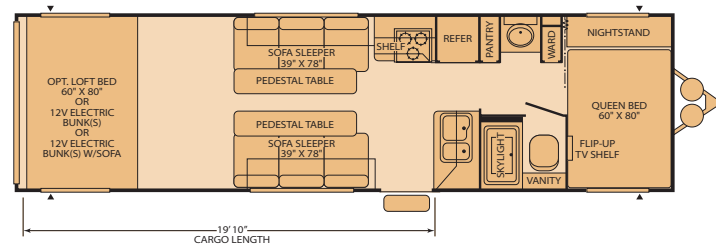
**230FS**  
Sleeps: 6-8



**260FS**  
Sleeps: 6-8



**310FS**  
Sleeps: 8-10

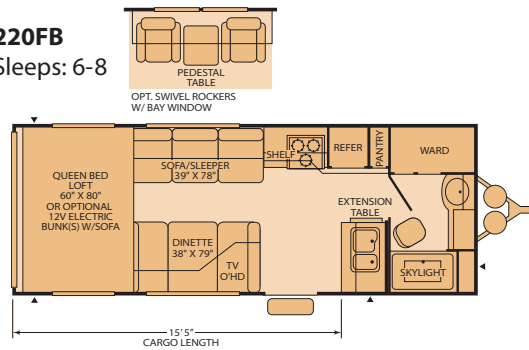


*Some models are not available in all areas of the country. Please see your local dealer for model availability.*

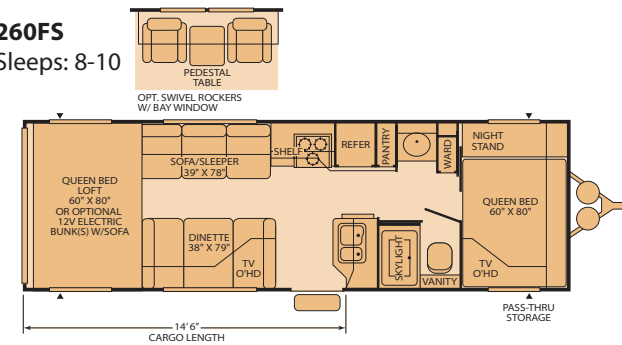
## Travel Trailer Floor Plans



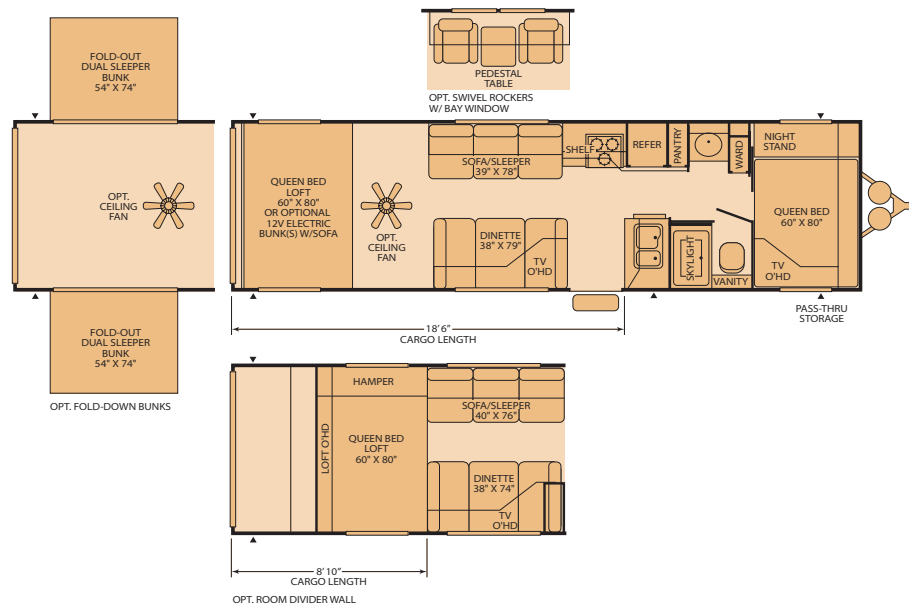
**220FB**  
Sleeps: 6-8



**260FS**  
Sleeps: 8-10

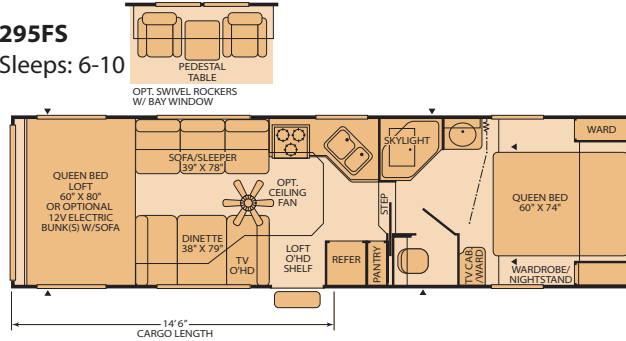
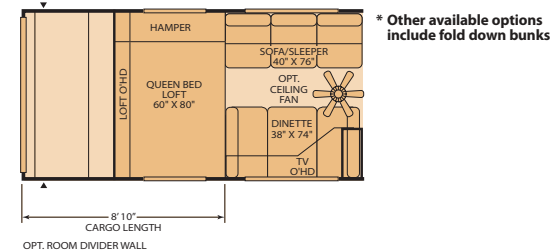
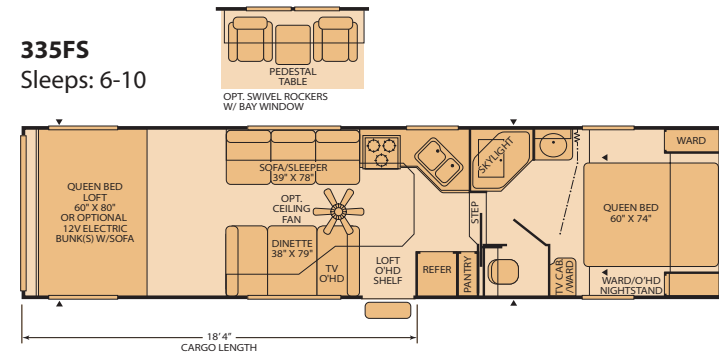
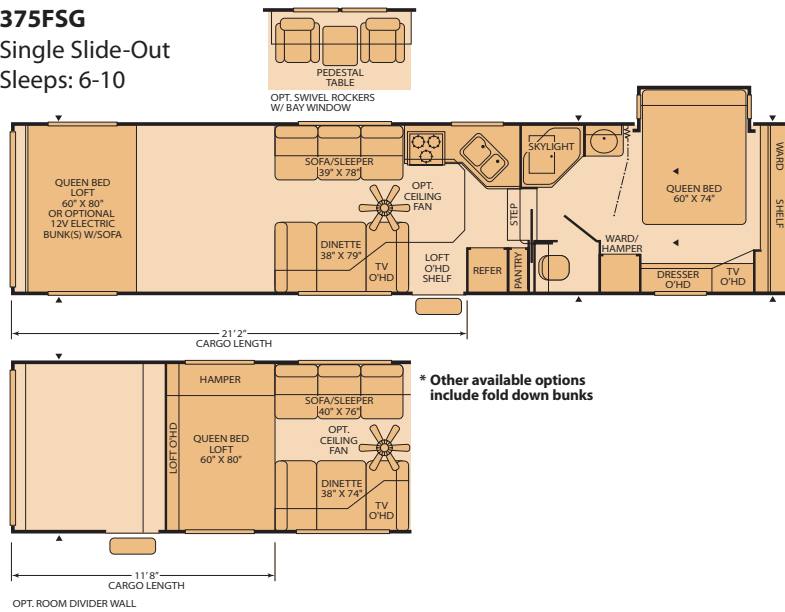
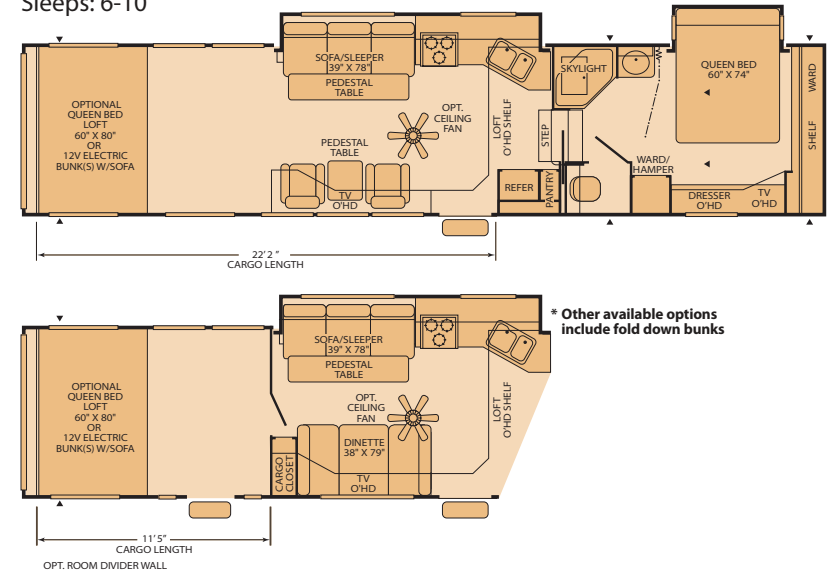


**300FS**  
Sleeps: 8-10



*Sleeping capacity is a variable number and is affected by items such as size of occupant, options and floor plan.*

## Fifth Wheel Floor Plans

**295FS**  
Sleeps: 6-10**335FS**  
Sleeps: 6-10**375FSG**  
Single Slide-Out  
Sleeps: 6-10**385FS2G**  
Double Slide-Out  
Sleeps: 6-10

*Sleeping capacity is a variable number and is affected by items such as size of occupant, options and floor plan.*



## GearBox S2 Standard Features

### Most Popular Features Visit [www.fleetwoodrv.com](http://www.fleetwoodrv.com) for a complete listing.

#### INTERIOR

##### THROUGHOUT

- Beavertail Departure Angle (Cargo Floor)
- Flush Floor Cargo Tie-Downs
- Hydroflame® Forced Air Furnace,

- Direct Spark Ignition (DSI) w/Thermostat
- Large Overhead Cabinets and Cabinet Doors

- Upgraded Vinyl Flooring
- 6-Gallon Propane Water Heater w/Bypass
- Full Systems Monitor Panel

##### LIVING ROOM

- Built-In TV Compartment
- Integrated Magazine Rack

- AM/FM Stereo/CD Player
- Cable TV Hook-up

- Facing Fold-Away Sofa Sleeper(s)

##### GALLEY

- Slide-Out Counter Extension
- 6 cu. ft. Dometic® Double Door Refrigerator

- 60/40 Sink
- Built-In Spice Shelf
- Magic Chef® 3-Burner Cook Top

- w/Hi-Output and Piezo Lite
- Range Hood with 12V Light and Exhaust Fan

##### BEDROOM

- Folding Privacy Door (Select Models)

- Queen Size Bed w/Under Bed Storage (Select Models)

- TV Shelf (Select Models)
- Mini Blinds

##### BATHROOM

- Medicine Cabinet with Mirrored Door & 2 Adjustable Shelves
- ABS Tub/Shower Walls

- Lever Bath Door Handle
- Power Exhaust Roof Vent
- Skylight

- Toilet Paper Holder
- Towel Bars (2)
- Towel Ring

##### SAFETY/CONVENIENCE

- Carbon Monoxide Detector/Alarm

- Fire Extinguisher
- Propane Detector/Alarm

- Smoke Detector/Alarm

#### EXTERIOR

##### THROUGHOUT

- 2,500 lb. Ramp Door Rating
- 7'2" Ramp Door Length w/Protective Stop Bumpers
- Cam Lock Ramp Door Hardware
- Integrated Dual Battery Rack
- Non-Skid Ramp Door Surface

- Propane Bib (Low Pressure) w/Quick Release Fitting
- Seamless, One-Piece Rubber Roof
- Chrome Wheels
- Diamond Plate Gravel Guard
- Dual 7 Gallon (30 lb.) Propane Tanks

- EZ-Lube Axles
- Propane Tank Cover
- Roof Ladder
- Safety Glass Windows

##### SAFETY/CONVENIENCE

- 30" Entry Door, Safety Glass Window w/Screen Door (Most Models)

- 120V GFI Circuit Protection (Galley/Bath/Patio)

- Amber Patio Light

##### BODY STRUCTURE

- Cambered Chassis

- Structural Steel C-Channel Main Rails

##### STORAGE

- Luggage Doors Radius Corner (Where Applicable)

- Power Cord Storage

- Sewer Hose Storage

### Most Popular Options

#### EXTERIOR

- 13,500 BTU Air Conditioner
- 4.0 kW Generator (Onan®) w/Pump Station (30 Gallon Fuel Tank) (N/A 180FK)
- Exterior Speakers
- Flood Lights
- Patio Awning

#### LIVING ROOM

- Electric 12V Loft Bunk(s) w/Sofa
- Strut Assisted Overhead Loft
- w/Queen-Size Futon, Bunk Ladder & Privacy Curtain

#### GALLEY

- 16" Magic Chef® Range w/Built-in 3-Burner, Hi-Output w/Piezo Lite
- Microwave w/Electronic Touch Pad

### Fleetwood Advantages

- 2,500 lb. Rated Ramp Door Construction
- 7' 2" Ramp Door Length
- Commercial Grade Flooring
- Diamond Plate Gravel Guard
- Over-Sized Overhead Cabinet Construction
- Structural Steel C-Channel Chassis Construction

- Stylish Exterior Graphic Package **S4 ONLY**

- Bicycle Rack Receiver (Optional)
- Central Vacuum (Optional)
- Chassis Integrated On-Board Air Compressor (Optional)
- Concealed Ramp Door Springs
- Entertainment Group Includes 19" TV/DVD Player & Audio/Video

- Jacks (Optional)

- Interior/Exterior Workbench (Optional)
- Multiple Pet/Security Attachment Rings
- Sidewall Located Center Turn Signals
- Whole Coach Water Filtration System

## GearBox S4 Standard Features

### Most Popular Features Visit [www.fleetwoodrv.com](http://www.fleetwoodrv.com) for a complete listing.

#### INTERIOR - Includes S2 Standard Features Plus More.

##### THROUGHOUT

- Commercial Grade Carpet Kit
- Commercial Grade Vinyl Flooring
- Laminated Sidewalls w/Welded Aluminum Frame

- Strut Assisted Overhead Loft w/Queen Size Futon, Bunk Ladder & Privacy Curtain

- 13,500 BTU Ducted Air Conditioner
- 4-Sidewall Located Cargo Tie-Downs
- Rear Overhead Loft Cabinet

##### LIVING ROOM

- AM/FM/CD Stereo w/4 Cube Speakers & Subwoofer

- CD Storage Compartment

- Fold-Away Dinette/Sleeper

##### GALLEY

- Adjustable Shelves-Galley Overhead
- Adjustable Wire Baskets (Pantry)
- Flip-Up Counter Extension
- High Rise Faucet
- Knife Rack
- Microwave w/Electronic Touch Pad

- Toe Kick
- 16" Maytag® 3-Burner (1 High-Output) Range w/Oven (Travel Trailer Models)
- 2 Sink Lids
- 22" Maytag® 3-Burner (1 High-Output) Range w/Oven (Fifth Wheel Models)(N/A on 385FS2G)

- 8 cu. ft. Dometic® Double Door Refrigerator
- Cutting Board
- Fluorescent Lighting
- Halogen Accent Lighting
- Upgraded Paper Towel Holder
- Wastebasket

##### BEDROOM

- Black Out Ceiling Vent (Select Models)

##### BATHROOM

- Clothes Hamper
- Retractable Tub/Shower Enclosure
- Removable Wire Baskets

- w/Basket Liner
- Decorative 3-Bulb Vanity Lighting
- Recessed Toilet Paper Holder

- Wardrobe w/Ventilated Hanger/Shelving (Select Models)

#### EXTERIOR

##### THROUGHOUT

- Deep Tint Safety Glass Windows
- Exterior Shower
- Ice Chest/Tool Box
- Patio Awning
- Roof Rack and Ladder

- 30" Radius Corner Entry Door, Safety Glass Window w/Screen Door
- Power Cord Storage
- R-11 Fiberglass Insulation (Ceiling)
- R-7 Fiberglass Insulation, (Floor,

- Sidewall, Front Section)
- Sewer Hose Storage
- Triple Entry Step
- TV Antenna

##### SAFETY/CONVENIENCE

- Back-Up Lights

- Illuminated Light Switches at Entry/Cargo Door(s)

##### STORAGE

- Ozite Carpeted Luggage Compartments

### Most Popular Options

#### INTERIOR

- 15,000 BTU Air Conditioner
- Family 2-Way Radios (4) w/Charging Station
- Ice Maker
- Electric 12V Loft Bunk(s) w/Sofa
- Interior/Exterior Work Bench
- Power Winch w/Cable Remote

#### EXTERIOR

- 5.5 kW Generator (Onan®) w/Pump Station (Dual Tanks, 30 & 18 Gallon Tank)
- Chassis Integrated 3-Gallon Air Tank w/Compressor and 25 ft. Hose
- Exterior Speakers

- Exterior Washer w/Pressurized Nozzle

### Optional Sportsman Edition Features

- Camouflage Interior Decor Package
- Clearance Light Guards
- Fishing Rod Holder

- Game Cleaning Station
- Heavy Duty Outerwear Hanger
- Heavy Duty Roof Rack and Ladder

- Sportsman Exterior Graphic Package
- Wood Storage Rack located on A-Frame

### Optional Motorsports Edition Features

- Adjustable Tie-Down Track
- Alloy Interior Decor Package
- Flashlight w/Holder
- Fuel Cell Storage Rack located

- on A-Frame
- Heavy Duty Roof Rack and Ladder
- Helmet/Riding Gear Storage Shelf
- Interior/Exterior Workbench

- Lube/Oil/Paper Towel Compartment
- Racing Flag Awning Package
- Tie-Down Strap Organizer

*Bold Denotes Fleetwood's Key Features*



## Setting the Standard in Travel Trailer & Fifth Wheel Quality.

**Fleetwood® prototypes are exposed to thousands of miles of durability testing. Those components that don't survive are redesigned until they do.** This sets our standard in safety and durability.

**Arctic White Seamless One-Piece Rubber Roof -** Provides the ideal weather seal.

**Aluminum Siding -** Complete with a baked-on enamel paint, this aluminum siding offers rigidity while still being affordable (S2 models only).

**Smooth Gloss Fiberglass Exterior Siding -** Adds more structural integrity than aluminum siding, provides a glossy surface that is easy-to-clean and adds long lasting beauty (S4 models only).

**In-Ceiling Air Conditioning Duct -** Distributes cool air throughout the RV better than in-floor ducting (S4 models only).

**Heavy Duty Ramp Door -** Rated at 2,500 lbs. Includes concealed spring construction (S4 models only) for protection against the elements.

## Weights and Measurements

WEIGHTS	S2 TRAVEL TRAILERS					S4 TRAVEL TRAILERS			S4 FIFTH WHEELS			
	180FK	220FB	230FS	260FS	310FS	220FB	260FS	300FS	295FS	335FS	375FSG	385FS2G
GVWR (lbs) <sup>1</sup>	8,400	9,500	11,000	11,400	13,000	11,000	11,200	14,000	13,800	14,300	17,000	17,200
Gross Dry Weight (lbs) <sup>2,6</sup>	4,586	5,370	5,617	5,957	7,240	5,965	6,750	7,327	8,253	8,583	10,272	11,773
Cargo Carrying Capacity (lbs) <sup>3,6</sup>	3,814	4,130	5,383	5,443	5,760	5,035	4,450	6,373	5,547	5,717	6,728	5,427
Hitch Dry Weight (lbs) <sup>2,6,8</sup>	759	873	838	1,061	1,056	978	1,052	1,127	1,982	2,119	2,361	2,466

### DIMENSIONS AND CAPACITIES

Length (Feet and Inches) <sup>4,6</sup>	22' 0"	25' 10"	27' 6"	29' 10"	34' 9"	25' 10"	29' 10"	33' 10"	31' 4"	35' 4"	38' 8"	39' 8"
Height (Feet and Inches) <sup>5,6</sup>	11' 5"	11' 5"	11' 5"	11' 5"	11' 5"	12' 2"	12' 2"	12' 2"	12' 9"	12' 9"	13' 1"	13' 5"
Fresh Water Holding Tank (gal) <sup>6,7</sup>	50	100	100	100	120	120	120	120	120	120	120	120
Grey Water Holding Tank (gal) <sup>6,7</sup>	40	40	40	40	55	55	55	55	55	55	55	55
Black Water Holding Tank (gal) <sup>6,7</sup>	40	40	40	40	40	40	40	40	40	40	40	40
Propane Capacity (lbs) <sup>6,7</sup>	60	60	60	60	60	60	60	60	60	60	60	60
Tire Size (Load Range)	ST225/75R15(C)	ST225/75R15(D)	ST225/75R15(D)	ST225/75R15(D)	ST225/75R15(D)	ST225/75R15(D)	ST225/75R15(D)	ST225/75R15(D)	ST235/80R16(D)	ST235/80R16(D)	ST235/80R16(D)	ST235/80R16(D)

- GVWR (Gross Vehicle Weight Rating) is the maximum permissible weight of this trailer when fully loaded. It includes all weight at the trailer axle(s) and tongue or pin.
- All dry weights are based on the standard model and do not include optional features or equipment.
- Cargo Carrying Capacity is determined by subtracting Gross Dry Weight from GVWR. Cargo Carrying Capacity includes all fluids, optional features, equipment, and personal cargo.
- Length taken from hitch or pin box to rear bumper (excludes accessories). Trailer length includes 3' 6" for hitch; fifth wheel includes standard pin box.

5. Add 9" if equipped with optional roof air conditioner.

6. Approximate.

7. Water weight equals 8.3 lbs per gallon. Propane weight equals 4.2 lbs per gallon.

8. Hitch weights are dependent upon how the trailer is equipped with options, on-board cargo and tank fluid levels. Actual hitch weights may be higher or lower than shown. It is recommended that the tow vehicle and hitch for your trailer have sufficient capacity to accommodate actual usage.

**GearBox Travel Trailers feature a body width over 96" which will restrict your access to certain roads. Before purchasing, you should research any state and/or province road laws which may affect your usage.**

*IMPORTANT—PLEASE READ: Product information, photography and illustrations included in this publication were as accurate as possible at the time of printing. For further product information and changes, please visit our website at [www.fleetwoodrv.com](http://www.fleetwoodrv.com) or contact your local Fleetwood dealer. Prices, materials, design and specifications are subject to change without notice. All weights, fuel, liquid capacities and dimensions are approximate. Fleetwood has designed its recreational vehicles to provide a variety of uses for its customers. Each vehicle features optimal seating, sleeping, storage and fluid capacities. The user is responsible for selecting the proper combination of loads (i.e. equipment, fluids, cargo, etc.) to ensure that the vehicle's capacities are not exceeded.*

## GEARBOX S2 AND S4 EXTERIOR/INTERIOR CHOICES.

The S2 series offers three interior decor choices, two wood finishes and a standard exterior graphics package.

The S4 series offers five interior decor choices with three wood finishes and three exterior graphic options.



GEARBOX S2

### CABANA (S2 ONLY)

#### Living Room/Dining Room



Sofa Sleeper



Dinette Cushions



BAD BLUE (S4 ONLY)

### COOL BLUE (S4 ONLY)

#### Living Room/Dining Room

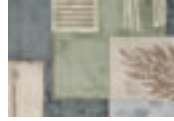


Sofa Sleeper



Dinette Cushions

#### Bedroom



Bedsread



Headboard



MELLOW YELLOW (S4 ONLY)

### FREESTYLE (S2 AND S4)

#### Living Room/Dining Room



Sofa Sleeper



Dinette Cushions

#### Bedroom\*



Bedsread



Headboard



REV RED (S4 ONLY)

### ALLOY (S4 ONLY, OPTIONAL)

#### Living Room/Dining Room

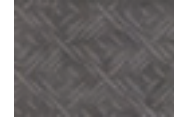


Sofa Sleeper



Sofa & Dinette  
Accent

#### Bedroom



Bedsread



Headboard

## INTERIOR WOOD FINISHES



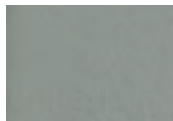
Summer Oak  
(S2 only)



Windsor Birch  
(S4 only)



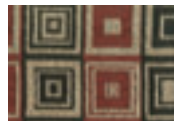
Black (available  
with Rev Red only)



Silver (available with  
Alloy only)

### REV RED (S2 AND S4, OPTIONAL)

#### Living Room/Dining Room



Sofa Sleeper &  
Dinette Cushions  
Bedroom\*



Sofa & Dinette  
Accent



Bedsread



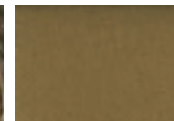
Headboard

### SPORTSMAN (S4 ONLY, OPTIONAL\*\*)

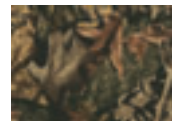
#### Living Room/Dining Room



Sofa Sleeper &  
Dinette Cushions  
Bedroom



Sofa & Dinette  
Accent



Bedsread & Headboard

\*Bedroom fabrics not available on GearBox S2.  
\*\* Available with Sportsman exterior only.



## What Drives You?

Maybe it's feeling like you're the only one on Earth. Perhaps it's the unique sense of closeness with the great outdoors. Or, it might be the joy that comes from spending quality time with family and friends. Whatever the reason, we know that you have a strong drive to experience everything that comes with spending time on the road. And for more than 50 years, we've shared that passion with you. Because we're RV enthusiasts ourselves, you can see our passion in the vehicles we design and build. Own a Fleetwood, and you'll feel like you're not just traveling, but embarking on an experience unlike any other. Set your own course for adventure and get out there and explore the world around you. Once you do, you'll see what it is that drives us — it's you.

### RV OWNERCARE\*

#### The Fleetwood One-Year Hitch to Bumper Warranty Coverage\*

This comprehensive program includes systems, appliances, components and construction — with no additional costs to you.

#### One-Year Full Warranty\*

Leaving the Fleetwood dealership after you've purchased your RV doesn't mean leaving Fleetwood's commitment to your satisfaction behind. This complete warranty is unique because it's just that — complete.

#### Fully Transferable\*

Because we don't hesitate to stand behind our products, the complete **warranty is fully transferable** during the 12 months of warranty coverage, which is a plus for resale value.

#### National Coverage

Traveling to Spokane? Buffalo? We've got you covered with one of the nation's largest trained service networks. In fact, **1,100 Fleetwood dealers** are just a phone call away.

**Require these features when you purchase your new RV...  
Fleetwood does.**



[www.fleetwoodrv.com](http://www.fleetwoodrv.com)

\*For complete info see your Fleetwood dealer. ©2006. Fleetwood Enterprises, Inc.  
Printed in the USA. Inventory control number GB06B2 2/06.

**FLEETWOOD TRAVELCADE CLUB** As a Fleetwood owner, you're eligible to become a member of our owners' group, Fleetwood Travelcade Club. It's a perfect way to meet other Fleetwood owners who love to travel across America and share in the RV lifestyle. Call (877) 577-2560 or visit [www.fleetwood.com/clubs](http://www.fleetwood.com/clubs) to learn more and join the fun!

**FLEETWOODRV.COM** To locate a dealer near you, visit our website or call 1-800-444-4905. We can also be contacted at Fleetwood Customer Relations, P.O. Box 7638, Riverside, CA 92513-7638.

**IMPORTANT—PLEASE READ** Product information, photography and illustrations included in this publication were as accurate as possible at the time of printing. For further product information and changes, please visit our website at [www.fleetwoodrv.com](http://www.fleetwoodrv.com) or contact your local Fleetwood dealer. Prices, materials, design and specifications are subject to change without notice. All weights, fuel, liquid capacities and dimensions are approximate. Fleetwood has designed its recreational vehicles to provide a variety of uses for customers. Each vehicle features optimal seating, sleeping, storage and fluid capacities. The user is responsible for selecting the proper combination of loads (i.e.: equipment, fluids, cargo, etc.) to ensure that the vehicle's capacities are not exceeded.

Your local Fleetwood dealer is:

**tread lightly!**  
LEAVING A GOOD IMPRESSION

