

08 JOURNEY





**SMARTSPACE**  
WEB

### NEW AND IMPROVED.

Redesigned from the ground up, the 2008 Winnebago Journey® is sure to remain a favorite among diesel enthusiasts. The Freightliner® XC Chassis boasts a 29,410-lb. GVWR and a 350-hp Cummins® diesel engine that can tackle any challenge. The chassis also provides improved storage with

large compartments and side-hinged doors. Top it off with a classy interior full of user-friendly features and the Winnebago Journey is a coach you'll be proud to call home.

## IT'S GOT THE LOOK

New interior styling makes the Winnebago Journey more inviting than ever. Three décor selections and contemporary Honey Cherry cabinetry with accent lighting make you feel right at home. Day/night pleated shades let you select your level of sunlight and privacy while dual-glazed, thermo-insulated windows improve the coach's thermal efficiency.

The Rest Easy multi-position lounge with an opposing sofa comes standard or you can choose the available Euro Chairs with ottomans shown here.

Watch movies in vivid detail on the 37" LCD TV. It's positioned for optimal viewing throughout the lounge. The Home Theater Sound System enhances the experience with surround sound and a CD/DVD player. An amplified antenna and a video selection system are also included to give you more options. Enjoy movies without shoreline or generator power by using the 2,000-watt inverter/charger.



**LIVING ROOM** Enjoy all the comforts of home in the Journey's large living area. Beautiful cabinetry looks great and maximizes storage. Tile flooring in the living area extends to the front entry for a great upscale look and easy clean up. Add the available King-Dome® in-motion satellite system with dual LNBS and receive satellite channels on two separate receivers.\*

\* Receivers not included. Not available in Canada.

**WEB** Select a Key Feature

The **WEB** icon designates a Winnebago Industries Key Feature. For further in-depth information and photos, use the Drop-down Menu or click on the 'Key Features' page at [winnebagoind.com](http://winnebagoind.com).



**EURO CHAIRS** Two available Euro Chairs in matching UltraLeather can be repositioned when parked and let you relax in style.



**WEB** **REST EASY**® This multi-position lounge changes from a sofa to a recliner with ottoman to a comfortable bed, all at the touch of a button.



**RECYCLING CENTER** Three bins let you separate trash and recyclables in the 39Z (two bins in the 37H).

### EAT WELL

You'll love preparing meals in this full-featured galley. Corian® solid-surface countertops with sink and range covers provide plenty of workspace for extravagant meals. Cooking is made easy in the 30" microwave/convection oven with sensor cook that takes the guesswork out of cooking. It also has a built-in fan above the recessed range top. Cleanups are quick and easy with a faucet that doubles as a pullout sprayer.

Our SmartSpace™ design philosophy provides user-friendly galley features like full-extension drawer slides and a pantry with roll-out compartments and adjustable trays. You also get your choice of the BenchMark® full-comfort dinette or the new dining table/buffet.



**GALLEY** The refrigerator features Titanium Touch™ stainless finish doors that have the look of stainless steel, resist fingerprints and are warmer to the touch than traditional stainless steel. The doors also have a steel core so you can use your favorite kitchen magnets. The cabinet drawers are sized to maximize storage and offer full-extension slides with positive latches for easy access.

titanium TOUCH™  
WEB



**WEB BenchMark®** The BenchMark full-comfort dinette incorporates innerspring cushions, for maximum comfort and flip-up storage compartments. At night, it quickly converts into a comfortable bed.



**TABLE/BUFFET** Serve dinner for up to four in style when you choose this expandable dining table with built-in buffet for extra storage.

## RELAX

Stretch out in the bedroom that features a large slideout and a king-size bed on the 39Z or a queen-size bed with underbed storage on the 37H. You'll also have a large mirrored wardrobe in each model for all of your clothes.

Fall asleep watching your favorite late-night show on the 26" LCD TV. A rear stereo system is also available and includes a CD/DVD player, radio, alarm clock and an input for your MP3 player.

Bedroom windows are positioned to maximize cross coach ventilation so you can enjoy a cool breeze on a pleasant summer night.



39Z Cocoa Pecan with Honey Cherry



sleep  number  
by SELECT COMFORT



**WEB SLEEP NUMBER BED**  
Digital remotes let you adjust each side of the available Sleep Number bed independently to your ideal level of comfort and support. Your Sleep Number – the Key to a Better Night's Sleep.™



**WASHER/ DRYER** Select the available washer/dryer and enjoy the convenience of never needing to stop at a laundromat.



**SHOWER**  
Conserve water with the adjustable flow showerhead with built-in water saver. A fold-down shower seat is also available.

## TAKE COMMAND

Slide behind the new ergonomic dash of the Journey and you're in control. Power sunvisors, a rearview monitor system with one-way audio, and auxiliary lamps for nighttime maneuvering are all yours at the flip of a switch. The available side-view cameras give you a view of the sides of your coach while turning.

A six-way, power-adjustable driver's seat provides added comfort for long trips. The passenger seat includes a footrest for extra relaxation. A driver's side window shade provides protection from the glare of the sun.

The RV Radio® includes an AM/FM stereo, CD player, MP3 input, a weather band and large, easy-to-use buttons and knobs. For added convenience, the RV Radio comes with two remotes—one handheld and one on the steering wheel. Upgrade your RV Radio with the available Sirius® Satellite radio package, which brings you 130 digital channels and comes with a complimentary six-month subscription. It also includes an iPod interface cable connector so you can control and listen to your iPod through the dash stereo.



**DASH** You're in command when you take the wheel with controls that are conveniently positioned for easy viewing and operation.



**KEY ONE** Open the entrance door, storage compartments and fuel fill doors with a single key. For added convenience, unlock and lock the entrance door with the keyless remote.



### BATTERY DISCONNECT SWITCH

A chassis battery disconnect switch is conveniently positioned in the engine compartment and helps prevent battery drain during extended storage.



**SIDE CAMERAS** Available side-mounted video cameras provide a clear view of the sides of the coach when turning.



### CAB SEATS

The driver's seat sits atop a six-way power pedestal for adjustable comfort. The driver and passenger seats swivel to become additional seating in the living area.

## READY TO GO

Getting set up at the campground is fast and easy in the Winnebago Journey. The service center offers color-coded labels for easy recognition and includes convenient features like the QuickPort™ service connection hatch and QuickConnect™ coupling valve that makes hookups quick and simple. It also houses the full-coach water filtration system and a wash station with hot and cold water that lets you rinse off sandy shoes or outdoor equipment.

Smart Storage™ features throughout the coach let you haul more gear. These include over-the-rail, pass-through compartments for oversized items and brackets for storing the folding ladder. There is also a connection for a portable satellite dish in the service center (satellite dish not included).

The Journey makes your adventures even more enjoyable with a standard electric patio awning and an 8,000-watt Cummins Onan® generator.



**SERVICE CENTER** Connections are easy to access and color-coded labels make campground hookups quick and easy.



**EXTERIOR ENTERTAINMENT CENTER** Sit back and watch the sunset under the awning while listening to your favorite tunes on the AM/FM stereo or CD player.



**LADDER** This available folding ladder fits neatly into the storage compartment.



### WEB **QuickPort**

The QuickPort service connection hatch allows hookups to stay connected even with the bay door closed.

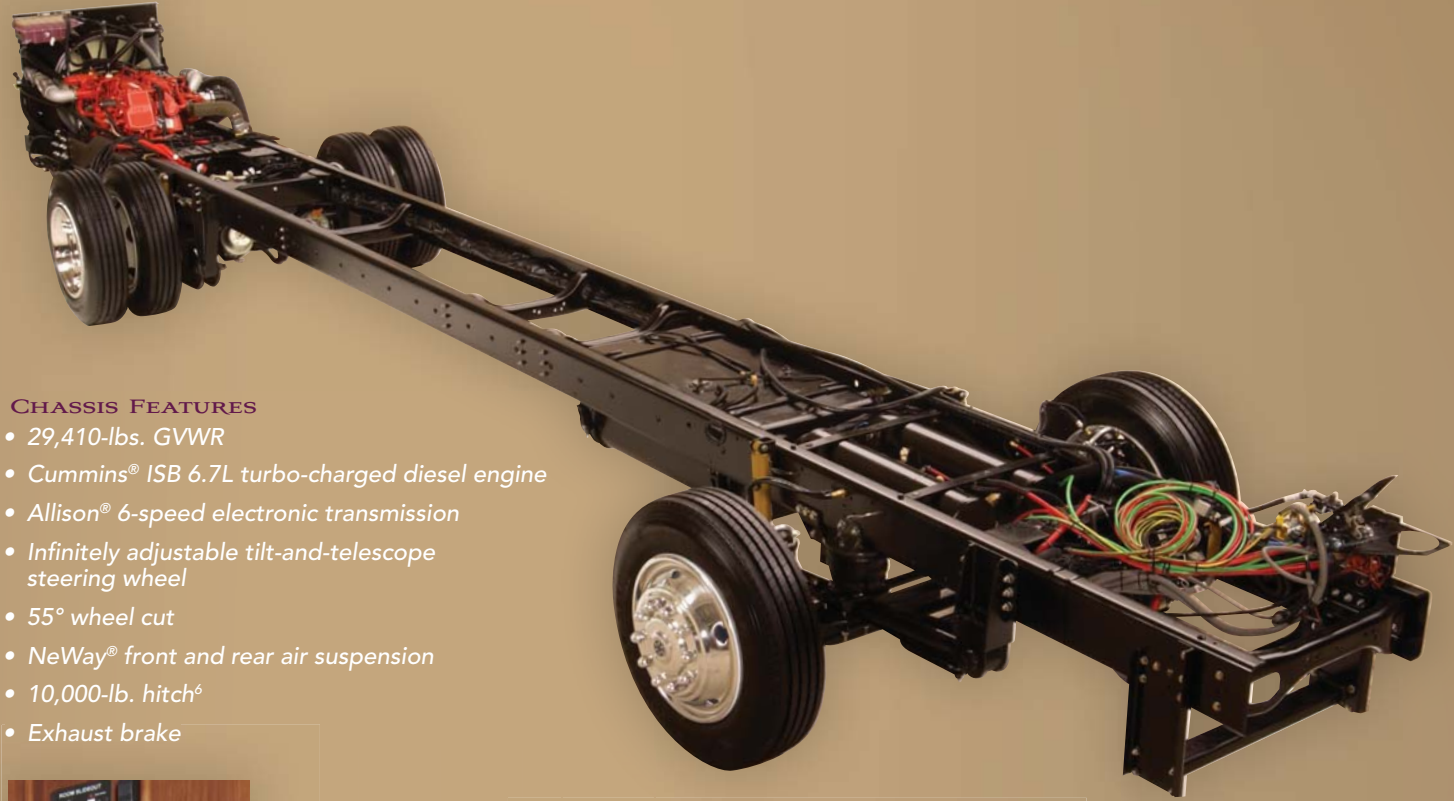
### WEB **QuickConnect**

The QuickConnect coupling valve ensures quick, clean connections to the dumpsite every time. There's even a holster in the service center for easy storage.

## FREIGHTLINER XC CHASSIS

The Winnebago Journey is offered exclusively on a Freightliner XC Chassis specifically designed and created for diesel-pusher motor home applications. It offers an exceptionally smooth ride with integrated front and rear suspension, and steering geometry that helps eliminate bump steer.

Freightliner has a well-known reputation for building top-quality chassis and vehicles, backing it up with a service network that is second to none. Over 400 service locations in the United States and Canada, many open 24 hours a day/7 days a week, offer quick service.



### CHASSIS FEATURES

- 29,410-lbs. GVWR
- Cummins® ISB 6.7L turbo-charged diesel engine
- Allison® 6-speed electronic transmission
- Infinitely adjustable tilt-and-telescope steering wheel
- 55° wheel cut
- NeWay® front and rear air suspension
- 10,000-lb. hitch<sup>6</sup>
- Exhaust brake



**WEB POWERLINE**® This energy management system monitors electrical usage and automatically cycles appliances on and off to prevent power overloads.



**WEB**

### ONE PLACE

This complete systems center places frequently used switches, gauges and controls in one convenient location.



**WEB TRUEAIR** Cools 40% faster and runs 10% quieter than traditional roof air units. The Coleman®-Mach® cooling unit is located in the basement, eliminating condensation runoff and creating a lower vehicle profile. The heat pump takes the chill off cool mornings without starting the furnace.



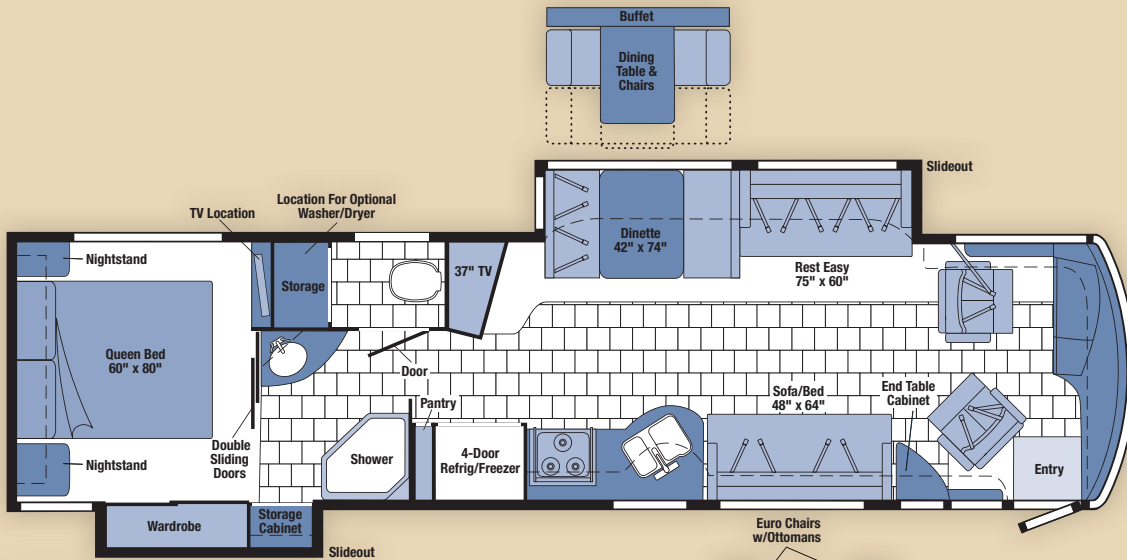
**WEB TRUELEVEL** Eliminate tank-level guess work with our exclusive TrueLevel™ holding tank monitoring system. It incorporates detector cells that read liquid levels from outside the tank. No probes means no more corrosion, just accurate readings, time after time.



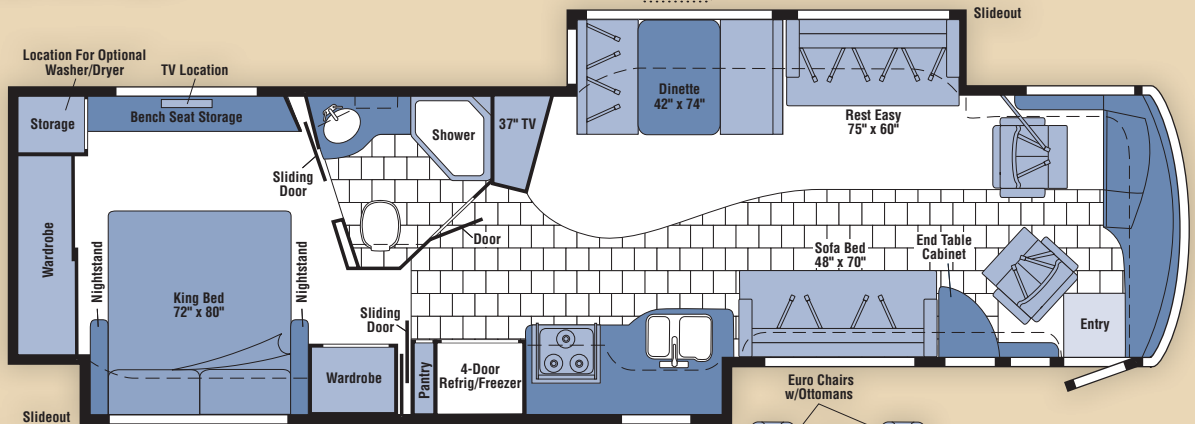
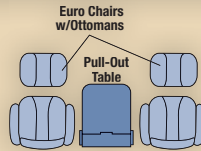
# 08 JOURNEY FLOORPLANS

Carpet  
 Vinyl Tile Floorcovering  
 Seat Belts

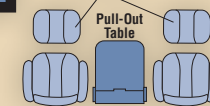
Note: Dimensions shown are for sleeping space only and may vary due to styling differences. Dashed lines denote overhead storage areas.



**37H**  
NEW



**39Z**  
NEW



# 08 JOURNEY SPECIFICATIONS

WEIGHTS & MEASURES	37H NEW	39Z NEW
Length	37'7"	39'3"
Exterior Height <sup>1</sup>	12'2"	12'2"
Exterior Width <sup>2</sup>	8'5.5"	8'5.5"
Exterior Storage <sup>3</sup> (cu. ft.)	118.2	149.5
Awning Length	19'6"	19'6"
Interior Height	7'2.5"	7'2.5"
Interior Width	8'0.5"	8'0.5"
Freshwater Capacity w/Heater <sup>4</sup> (gal.)	92	92
Holding Tank Capacity - Black/Gray <sup>4</sup> (gal.)	62/66	62/72
LP Capacity <sup>5</sup> (gal.)	28	28
Fuel Capacity (gal.)	90	90
GCWR <sup>6</sup> (lbs.)	39,410	39,410
GVWR (lbs.)	29,410	29,410
GAWR - Front (lbs.)	10,410	10,410
GAWR - Rear (lbs.)	19,000	19,000
Wheelbase	242"	262"

AUTOMOTIVE/CHASSIS	37H	39Z
<b>Freightliner® XC Chassis</b> Cummins® ISB 6.7L turbo-charged diesel, 350-hp, rear radiator, Allison® 6-speed electronic transmission, NeWay® front & rear air suspension, 170-amp. alternator, exhaust brake, 4-wheel ABS, <b>Wheels</b> stylized aluminum	S	S
<b>Leveling Jacks</b> hydraulic, automatic controls, <b>Steering Wheel</b> vinyl-wrapped, power assist w/tilt & telescoping, <b>Trailer Hitch</b> ® 10,000-lb. drawbar/500-lbs. maximum vertical tongue weight & 7-pin wiring	S	S

CAB AREA & DRIVER CONVENIENCES	37H	39Z
<b>C.B. Wire Prep</b> 12-volt DC power supply, <b>Cab Seat (Driver)</b> 6-way/power-assist, <b>Cab Seat (Passenger)</b> w/footrest, <b>Cab Seats (UltraLeather™)</b> armrests, lumbar support, multiadjustable slide/recline & swivel, <b>Cruise Control</b> , <b>Defroster Fans</b> auxiliary 2-speed w/ instrument panel switch, <b>Exhaust Brake Switch</b> , <b>Map Lights</b> , <b>Monitor System</b> rearview b/w monitor w/ single camera & 1-way audio, Audiovox®, <b>Power Door Lock</b> keyless entry w/remote, <b>Powerpoints</b> 12-volt DC, <b>Shade</b> driver window, light filtering, <b>Stepwell Cover</b> , <b>Sunvisors</b> powered, <b>Window (Driver &amp; Passenger)</b> full-slider w/screen, dual-glazed, <b>Windshield Wipers</b> intermittent, radial arm design	S	S
<b>Video Camera System</b> side-mounted cameras	0	0

ENTERTAINMENT	37H	39Z
<b>Entertainment Center (Exterior)</b> DC receptacle, AC duplex receptacle, AM/FM radio w/CD player & remote, radio antenna, speakers, lockable compartment, <b>Home Theater Sound System</b> amplifier, CD/DVD player, receiver, speakers (5), subwoofer, <b>RV Radio® (Cab)</b> AM/FM stereo, CD player, weather band, iPod/MP3 input, remotes, roof-mounted flexible rubber antenna, speakers (2), <b>Radio Power Switch</b> main/auxiliary battery, <b>Satellite System Ready</b> , <b>Telephone Input</b> interior jacks, <b>TV (Rear)</b> AC 26" LCD, stereo w/remote, <b>TV (Entertainment Center)</b> AC 37" LCD w/remote, interior jacks, <b>TV Enhancement Package</b> antenna (amplified), interior jack(s), coax wiring, cable input, exterior jack, <b>Video Selection System</b>	S	S
<b>Compact Multidisc Changer</b> w/remote, <b>Satellite Dish Antenna</b> RV digital, automatic, <b>Satellite Radio</b> Sirius®, includes antenna, receiver, remote, 6-month prepaid subscription, iPod interface, <b>Satellite Dish</b> RV digital, in-motion, King-Dome®, <b>Stereo System (Rear)</b> AM/FM radio, CD/DVD player, iPod/MP3 input, front headphone jack, alarm clock	0	0

INTERIOR	37H	39Z
<b>Ceiling</b> vinyl, <b>Countertops</b> Corian® solid-surface, galley & bath, <b>Lights</b> ceiling, wall switches, incandescent, galley, bath & bedroom, <b>Light</b> decorative, dinette, <b>Lights</b> fluorescent, recessed, galley, dinette, bath, hallway & lounge w/wall switches, <b>Lights</b> reading, lounge, bedroom area, <b>Mini Blinds</b> galley & bath areas, <b>Roof Vent</b> bath area, powered fan, <b>Roof Vent</b> galley, powered ventilator fan, <b>Curtain</b> front wraparound, <b>Shades</b> pleated, day/night w/blackout, lounge, dinette & bedroom areas, <b>Windows</b> dual-glazed/thermo-insulated/flush-mounted	S	S

FURNITURE	37H	39Z
<b>BenchMark® Full-Comfort Dinette (Fabric)</b> w/ access to storage below, child seat tether anchor, <b>Entertainment Center</b> , <b>Rest Easy® Multi-Position Lounge (Fabric)</b> throw pillows, <b>Sofa/Bed (Fabric)</b> access to storage below, throw pillows	S	S
<b>Dining Table/Buffer &amp; Chairs</b> freestanding (2), folding (2), <b>Euro Recliners w/Ottoman (2)</b> , <b>Rest Easy Multi-Position Lounge (UltraLeather)</b> throw pillows, <b>Sofa/Bed (UltraLeather)</b> access to storage below, throw pillows	0	0

<b>GALLEY</b>	37H	39Z
<b>Cutting Board</b> slideout, <b>Faucet</b> single-control w/ pullout sprayer, Moen®, <b>Microwave/Convection Oven</b> w/range fan, exterior vent, residential 30," Sharp®, <b>Pantry, Range Top</b> 3-burner, sealed burners, range cover, Amana®, storage below, <b>Recycling Center, Refrigerator/Freezer</b> 4-door w/icemaker, Titanium Touch™ stainless finish, Norcold®, <b>Sink Covers</b> countertop material, <b>Water Filtration System</b> Aqua-pure®	<b>S</b>	<b>S</b>

<b>BATH</b>	37H	39Z
<b>Cabinet</b> lavatory, <b>Cabinet(s)</b> linen/storage, <b>Faucet (Lavatory)</b> single-control, <b>Faucet (Shower)</b> dual-control, <b>Light</b> shower, <b>Lights</b> makeup, <b>Showerhead</b> handheld w/water saver valve, <b>Shower Door</b> textured glass	<b>S</b>	<b>S</b>
<b>Shower Seat</b> fold-down	<b>0</b>	<b>0</b>

<b>BEDROOM</b>	37H	39Z
<b>Bed</b> queen, Serta®, innerspring w/underbed storage, bedspread, pillow shams, throw pillow, headboard	<b>S</b>	
<b>Bed</b> Sleep Number® queen-size mattress by Select Comfort™	<b>0</b>	
<b>Bed</b> king, Serta, innerspring, bedspread, pillow shams, throw pillow, headboard, bench	<b>S</b>	
<b>Bed</b> Sleep Number king-size mattress by Select Comfort	<b>0</b>	

<b>EXTERIOR</b>	37H	39Z
<b>Air Horns</b> under hood, <b>Awning</b> patio, electric w/ wind sensor & remote, <b>Awning Rails</b> w/rain gutters, <b>Door</b> entrance w/screen door, deadbolt lock, keyless entry, remote, <b>Entrance Door Step</b> double, electric w/ doorjamb switch, <b>Ladder, Lights</b> porch, patio, <b>Light</b> service, driver's side, <b>Fuel-Fill Doors</b> locking, <b>Mirrors</b> electric remote w/defrost, turn signal, <b>Mud Guard</b> full-width, rear, <b>Receptacle</b> AC duplex, <b>Sidewall Skin</b> 1-piece smooth fiberglass, high-gloss, <b>Storage Compartments</b> smooth valance panels, side-hinged below sliderooms, TriMark® KeyOne™ System, paddle latch, lights	<b>S</b>	<b>S</b>
<b>Awning</b> entry door, electric, <b>Front Protective Mask, Step Ladder</b> folding	<b>0</b>	<b>0</b>

<b>SYSTEMS</b>	37H	39Z
<b>HEATING &amp; A/C – Automotive Heater/Air Conditioner</b> blend air system, <b>Furnace</b> 40,000 BTU, <b>TrueAir®</b> Residential Central Air Conditioning w/heat pump	<b>S</b>	<b>S</b>

<b>SYSTEMS</b>	37H	39Z
<b>ELECTRICAL – Auxiliary Start Circuit, Batteries (Coach)</b> deep-cycle (3), <b>Battery (Chassis) Disconnect System, Battery (Chassis) Charger/Maintainer, Dual Battery</b> charge control (automatic), <b>Electrical Distribution System</b> AC & DC breaker panels, <b>Generator</b> 8,000-watt, Cummins Onan® Quiet Diesel™, <b>Generator/Shoreline Automatic Changeover Switch, OnePlace® Systems Center</b> wall-mounted, courtesy light, battery digital voltmeter, PowerLine energy management display, generator hourmeter gauge, generator start/stop switch, heating & A/C thermostat, holding tank levels, LP tank level, solar panel/battery charger light, water heater switch, water heater light & pilot indicator light, water pump switch, water tank level, <b>Power Cord</b> 50-amp., <b>PowerLine Energy Management System, Service Center (Electrical)</b> cable TV input, power cord, shoreline/generator automatic changeover switch, telephone input, portable satellite dish hookup, QuickPort® service connection hatch, leveling switch, inverter/charger, DC/AC, 2,000-watt inverter, exterior service lamp switch, <b>Solar Panel</b> 10-watt battery charger	<b>S</b>	<b>S</b>
<b>Generator Automatic Start System</b>	<b>0</b>	<b>0</b>
<b>PLUMBING – Drain</b> 1½" water tank, <b>Service Center (Drainage/Water)</b> exterior service lamp switch, drainage valves, holding tank flushing system, 10' sewer hose w/QuickConnect® coupling valve, QuickPort service connection hatch(es), city water diverter fill, drain for freshwater system, exterior wash station w/pump switch, <b>Tank</b> flushing system, black tank only, <b>Tank</b> holding, heated compartment, <b>Tank</b> LP, permanent mount w/gauge, <b>TrueLevel™ Holding Tank Monitoring System, Water Heater</b> 10-gallon electronic ignition, LP gas/120 VAC w/motoraid, <b>Water Hookup</b> city, <b>Washer/Dryer</b> prep, <b>Water Pump</b> demand, <b>Water Tank Fill</b> pressurized city hookup w/ diverter valve, <b>Water System Filtration Package</b> replaceable filter, filter housing, wrench, <b>Water System Winterization Package</b> water heater bypass valve & siphon tube	<b>S</b>	<b>S</b>
<b>Washer/Dryer Combination</b>	<b>0</b>	<b>0</b>

<b>SAFETY</b>	37H	39Z
<b>Assist Bars</b> interior, <b>Assist Handle</b> exterior, <b>Bumpers</b> front & rear, <b>Child Seat Tether Anchor, Detectors/Alarms</b> LP leak, smoke, carbon monoxide, <b>Fire Extinguisher</b> 10 BC, <b>Fog Lamps, Ground Fault Interrupter, Lamps</b> aux. side illumination, <b>Light</b> high-mount brakelamps, <b>Light(s)</b> courtesy w/wall switch(es), <b>Seat Belts</b> cab, 3-point, <b>Seat Belts</b> lap (in selected areas), <b>Window</b> escape, <b>Windshield</b> laminated safety glass, 1-piece	<b>S</b>	<b>S</b>

<b>WARRANTY<sup>1</sup></b>	37H	39Z
<b>12-month/15,000-mile basic warranty<sup>2</sup></b>	<b>S</b>	<b>S</b>
<b>36-month/36,000-mile limited warranty on structure<sup>3</sup>, 10-year limited parts &amp; labor warranty on roof skin<sup>4</sup></b>		

- The height of each model is measured to the top of the tallest standard feature and is based on the curb weight of a typically equipped unit. The actual height of your vehicle may vary by several inches depending on chassis or equipment variations. Please contact your dealer for further information.
  - Journey floorplans feature a wide-body design – over 96" In making your purchase decision, you should be aware that some states restrict access on some or all state roads to 96" in body width. Before making your purchase decision, you should confirm the road usage laws in the states of interest to you.
  - The load capacity of your motor home is designated by weight, not by volume, so you cannot necessarily use all available space when loading your motor home.
  - Capacities are based on measurements prior to tank installation. Slight capacity variations can result due to installation applications.
  - Capacities shown are tank manufacturer's listed water capacity (W.C.). Actual filled LP capacity is 80% of listing due to overfilling prevention device on tank.
  - Actual towing capacity is dependent on your particular loading and towing circumstances which includes the GVWR, GAWR, and GCWR as well as adequate trailer brakes. Please refer to the Operator's Manual of your vehicle for further towing information.
  - See separate chassis warranty.
  - See your dealer for complete warranty information.
- NA Not Available  
**S** Standard  
**0** Optional

Not all items available in combination. See dealer for details.

Winnebago Industries® continuing program of product improvement makes specifications, equipment, model availability, and prices subject to change without notice. Comparisons to other motor homes are based on the most recent information available at printing.

## INTERIOR DECOR

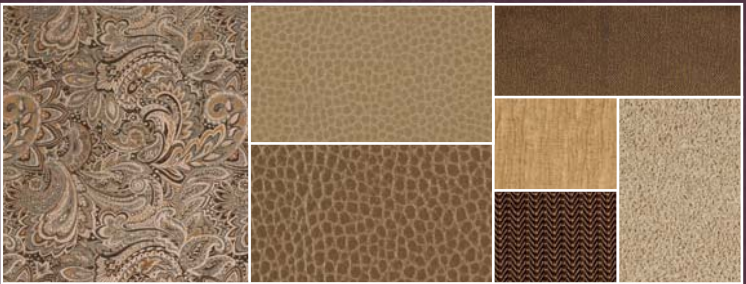
Choose from three fabric selections and one cabinet wood choice with hidden hinges.



MAIN	ULTRA-LEATHER	BEDSPREAD	
		ACCENT	CARPET
		ACCENT	



Cool Jazz w/available Truffle/Sandbox UltraLeather™



Cocoa Pecan w/available Briarwood/Fields UltraLeather



Log Cabin w/available Timber/Pine Cone UltraLeather



Honey Cherry

## FULL-BODY PAINT



Cool Beige



Redwood



Black Cherry



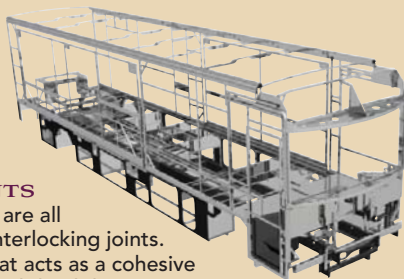


**BUILT BY WINNEBAGO INDUSTRIES.  
BUILT TO LAST.**

Winnebago motor homes are built by Winnebago Industries, the company that defined motor homes. The company that built its reputation on quality construction. The company that transformed the motor home concept into a way of life.

Today, Winnebago Industries brings that reputation for quality and its 49-year history of motor home innovation to the design and construction of every motor home. It's all a part of SuperStructure<sup>®</sup>, our exclusive system of proprietary structural components that instills each motor home with improved strength and durability.

**SOLID FOUNDATION** Steel and aluminum truss work provides a solid, flat foundation for the floor and sidewalls. Winnebago Industries engineers also take special care to distribute the weight of components to ensure proper handling and stability.



**INTERLOCKING JOINTS**

The floor, sidewalls and roof are all integrally connected using interlocking joints. This creates a coach body that acts as a cohesive unit for improved strength and durability.

**E-COATING** Winnebago Industries employs an exclusive 12-stage automotive-style dip tank process to apply an advanced electrodeposition coating on critical steel components for superior corrosion protection.



**WEB**

**THERMO-PANEL<sup>®</sup> SIDEWALLS** Invented by Winnebago Industries, Thermo-Panel construction combines a fiberglass panel, high-density, block-foam insulation and aluminum support structures to create some of the most durable, lightweight sidewalls in the industry.

**ATTENTION TO DETAIL** Whether it's sending every coach through a high-pressure water tunnel to check for leaks or labeling each individual wire and barcoding parts to save time and frustration during service, Winnebago Industries considers every detail to ensure your Winnebago motor home provides you with years of pleasure.

**STRONG AS STEEL** Appliances are secured directly to embedded steel plates for added safety. Windshields are also mounted in steel with an automotive-style sealant; lesser designs use a rubber gasket to mount the windshield in fiberglass.



1-year-old Winnebago fiberglass roof



1-year-old competitor's rubber roof

**FIBERGLASS ROOF** The Journey features a crowned, one-piece fiberglass roof, backed with a 10-year limited parts-and-labor roof skin warranty. Fiberglass offers superior strength, attractiveness and durability over the rubber roofs found on many competitive models which can chalk, streak and degrade over time. Fiberglass also provides increased puncture and tear resistance.



**TAKE A TOUR** We're proud of our process, state-of-the-art facilities and the people who make Winnebago Industries number one. We invite you to visit our factory in Forest City, Iowa, for a first-hand look at the dedication and technology behind every motor home we build.



**RECOGNIZED QUALITY** The Recreation Vehicle Dealer Association annually rates RV manufacturers and awards the Quality Circle award to manufacturers who provide exceptional products, service and support. Winnebago Industries is proud to be the only manufacturer to receive this award every year since its inception.



**COMMITTED TO SERVICE** We back our motor homes with the industry's best service after the sale.

- 12-month/15,000-mile basic limited warranty
- 36-month/36,000-mile warranty on structure
- Standard 10-year limited parts-and-labor roof skin warranty
- Complimentary 24-hour roadside assistance program
  - RV Technical Assistance Hotline
  - RV Service Appointment Assistance
  - Emergency Trip Interruption
  - Emergency Message Service
  - Nationwide Trip Routing
  - Fee-Free Travelers Cheques
- TripSaver Fast Track Parts. TripSaver guarantees that in-stock warranty parts ship directly to your dealer within 24 hours.
- National dealer service network



**WIT CLUB** Winnebago owners are like family. Joining the Winnebago-Itasca Travelers is a great way to meet and travel with other Winnebago enthusiasts. Members enjoy:

- Caravans and rallies
- Local and state group activities
- RV travel benefits



**WINNEBAGOIND.COM**  
Visit us on the web for more info on all of our motor homes, the latest product updates and a host of web-exclusive content.

For Sales and Service Information Contact:

Built proudly by



NYSE listing: WGO