



STEEL

BLACK

# GEORGETOWN BY FOREST RIVER GT5

## 5 SERIES DIMENSIONS & CAPACITIES

	31L5	34H5	34M5	36B5
Chassis	Ford F53	Ford F53	Ford F53	Ford F53
Engine	V-10	V-10	V-10	V-10
Horsepower	320 HP	320 HP	320 HP	320 HP
Torque (ft.-lbs)	460	460	460	460
Wheelbase	228"	242"	242"	242"
Fuel Capacity (gal)	80	80	80	80
GVWR (lbs)	22,000	22,000	22,000	22,000
GCWR (lbs)	26,000	26,000	26,000	26,000
GAWR Front (lbs)	8,000	8,000	8,000	8,000
GAWR Rear (lbs)	15,000	15,000	15,000	15,000
Exterior Storage (cu ft)	187	191	219	176
LP Tank (gal)	24.5	24.5	24.5	24.5
Fresh Water (gal)	82	82	82	82
Water Heater (gal)	6	6	6	6+6=12
Grey Tank (gal)	52	52	52	42+42=84
Black Tank (gal)	52	52	52	42+42=84
Length	35' 5"	37' 11"	37' 11"	37' 11"
Exterior Width	99.5"	99.5"	99.5"	99.5"
Exterior Height	12' 5"	12' 5"	12' 5"	12' 5"
Interior Width	95.5"	95.5"	95.5"	95.5"
Interior Height	82"	82"	82"	82"
Awning Length	19'	17' & 12'	18'	12' 6"
Furnace (BTU)	35K	35K	35K	35K/20K
Safety Belts	6	6	6	6

**GVWR (Gross Vehicle Weight Rating)** is the maximum permissible weight of the unit when fully loaded. It includes all weights, inclusive of all fluids, occupants, cargo, optional equipment and accessories. For safety and product performance do NOT exceed the GVWR.

**GCWR (Gross Combined Weight Rating)** is the maximum permissible loaded weight of your motor home and any towed trailer or towed vehicle. Actual GCWR of this vehicle may be limited by the sum of the GVWR and the installed hitch receiver maximum capacity rating; see hitch rating label for detail.

**GAWR (Gross Axle Weight Rating)** is the maximum permissible weight, including cargo, fluids, optional equipment and accessories that can be safely supported by each axle.

**UVW (Unloaded Vehicle Weight)\*** is the typical weight of the unit as manufactured at the factory. It includes all weight at the unit's axle(s), including full fuel, all fluids and LP Gas. The UVW does not include cargo, fresh potable water, additional optional equipment or dealer installed accessories.

\*Estimated Average based on standard build optional equipment.

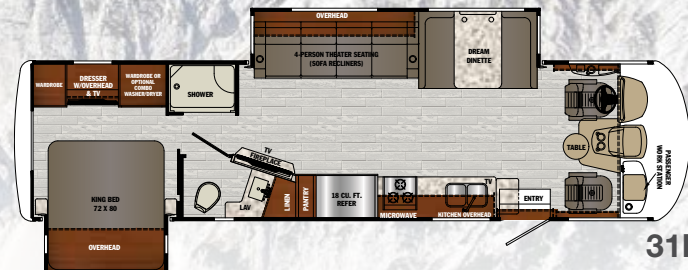
**CCC (Cargo Carrying Capacity)\*\*** is the amount of weight available for fresh potable water, cargo, passengers, additional optional equipment and accessories. CCC is equal to GVWR minus UVW. Available CCC should accommodate fresh potable water (8.3 lbs per gallon). Before filling the fresh water tank, empty the black and gray tanks to provide for more cargo capacity.

\*\* Estimated average based on standard build optional equipment

Each Forest River RV is weighed at the manufacturing facility prior to shipping. A label identifying the unloaded vehicle weight of the actual unit and the cargo carrying capacity is applied to every Forest River RV prior to leaving our facilities.

The load capacity of your unit is designated by weight, not by volume, so you cannot necessarily use all available space when loading your unit.

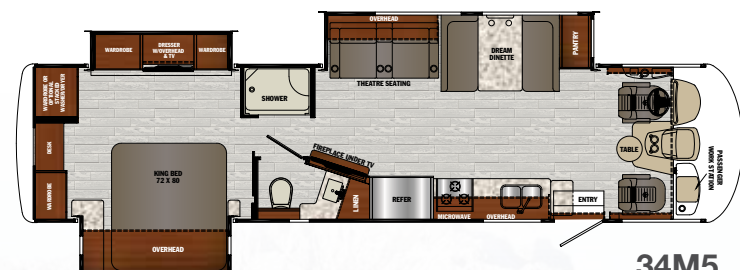
Actual towing capacity is dependent upon your particular loading and towing circumstances, which includes the GVWR, GAWR and GCWR as well as adequate trailer brakes. Please refer to the Operator's Manual of your vehicle for further towing information.



31L5



34H5



34M5



36B5

## 5 SERIES FULL BODY PAINT OPTIONS



MERLOT

SOLSTICE

SEMINOLE

MIDNIGHT

## STANDARDS

Fiberglass Front Cap w/Chrome Package  
Lighted Logo, LED Accent Lights and  
Automotive Bonded Front Windshield

### CHROME PACKAGE

Chrome Headlight Bezels  
Chrome Foglight Bezels  
Chrome Mirrors & Logos  
One Piece Fiberglass Roof  
Slam Latch Side Hinge Baggage Doors  
5.5kw Onan Generator  
22.5" Tires w/Aluminum Wheels  
2000w Inverter  
Heated and Enclosed Holding Tanks  
w/Arctic Package

5000 lbs. Tow Hitch w/7-Way Plug  
Hydraulic 4-Point Leveling Jacks  
Rear Roof Ladder  
Grey Rotocast Storage Compartments w/Drains  
Rubber Tread Entry Step  
Rubberized Entry Assist Handle (exterior)  
Stainless Steel Entry Assist Handle (interior)  
Flush Floor Construction Throughout  
Residential Vinyl Flooring  
Adjustable 3 Point Seat Belts  
Power Driver's Seat  
Diamond Plate Rubber Floor Covering (driver area)  
Power Front Sun Shade  
Manual Cockpit Side Sun Shades  
Roller Shades Throughout  
LED Map, Bunk and Accent Lights  
Manual Front Overhead Bunk  
Low Profile Engine Cover w/Drink Holders  
(2) High Output Quiet Air Command™  
Ducted Roof A/C w/Chill Construction  
and (2) Heat Pump (31L5 has 1 Heat Pump)  
6 Gallon Gas/Electric Water Heater (x2 36B5)  
KING Jack™ Digital TV Antenna  
w/Mount & Built-in Signal Meter  
Marine Bluetooth Exterior Speakers  
10.1" Dash Entertainment System  
Custom Cockpit Dash w/ABS Side Consoles,  
Drink Holders, 110v Outlet/USB,  
Passenger Side Workstation

Dream Dinette  
Undermount Stainless Steel Kitchen Sink  
Stainless Steel Faucet w/Pull Out Sprayer  
18 cu. ft. Stainless Steel Gas/Electric  
Norcold Refrigerator (34H5 is 12 cu. ft.)  
Stainless Steel 3-Burner Cooktop  
w/Oven and Flush Mount Glass Stove Cover  
Convection Microwave  
Raised Panel Solid Wood Cabinet Doors  
w/Hidden Hinges  
Solid Surface Countertop w/Flip Up Extension  
Hide-A-Bed Sofa w/Footrests (36B5)  
Power Theatre Seats (31L5, 34H5, 34M5)  
40" LED Main TV  
Bedroom TV w/Flip Up  
Night Stands w/110v Outlets/USBs  
King Bed (72" x 80")  
One Piece Fiberglass Shower  
Stainless Steel Bathroom Sink  
Washer Dryer Combo Prep (stack on 34M5)

Outside Shower  
Black Tank Flush  
Triple Electric Entrance Step  
Encased Power Patio Awning w/LED Light  
Slideout Room Awning(s)  
30" Wide Entrance Door  
Color Side and Rear Camera Package  
One-way Audio on Backup Camera  
Dual Coach Batteries  
Battery Disconnect  
40" Exterior TV  
Emergency Start Switch  
Precision Circuits Multiplex System  
Enclosed Quick Connect Exterior LP Fitting

## POPULAR OPTIONS

P2K Power Front Overhead Bunk  
Dual Pane Windows  
Exterior Cargo Tray  
Washer Dryer Combo  
(Stackable Washer/Dryer for 34M5)  
7.0kw Onan Generator  
Full Body Paint  
Power Theatre Seats (36B5)  
(Standard on 31L5, 34H5, 34M5)

## EXTERIOR OPTIONS

Steel Partial Paint Package  
Black Partial Paint Package

## FULL BODY PAINT OPTIONS

Merlot  
Solstice  
Seminole  
Midnite

## CABINETRY

Landis Ash

## INTERIOR DÉCOR OPTIONS

Sand Castle  
Granite

**FREE MEMBERSHIP**  
to Forest River Owners' Group

www.forestriverfrog.com



## PRECISION CIRCUITS INC



# GEORGETOWN BY FOREST RIVER GT5

Forest River, Inc.  
Georgetown Division  
902 County Road 1  
Elkhart, IN 46515  
(574) 367.3285



## CUSTOMER SATISFACTION



www.ForestRiverBuyLocal.com

## 24/7 EMERGENCY ROADSIDE ASSISTANCE WITH VEHICLE PURCHASE\*

TOWING	WINCH-OUT
JUMP-STARTS	MOBILE MECHANIC
TIRE CHANGES	TECHNICAL SUPPORT
FLUID DELIVERY	DEALER LOCATOR SERVICES
LOCKOUT SERVICE	



\*VALID FOR 1 YEAR FROM DATE OF PURCHASE



**Learn More**  
Scan this barcode using  
a QR Reader on your  
smart phone to learn  
more about Forest River.



A Berkshire Hathaway company.

All information contained in this brochure is believed to be accurate at the time of publication. However, during the model year, it may be necessary to make revisions and Forest River, Inc., reserves the right to make all such changes without notice, including prices, colors, materials, equipment and specifications as well as the addition of new models and the discontinuance of models shown in this brochure. Therefore, please consult with your Forest River, Inc., dealer and confirm the existence of any materials, design or specifications that are material to your purchase decision. 01/20

©2020 GT5

a Division of Forest River, Inc., a Berkshire Hathaway company. All Rights Reserved.