

ASPEN TRAIL LE

MINI TRAILERS &
TRADITIONAL TRAVEL TRAILERS

Make Every Journey Your Own.



Photo Courtesy of Adam Booth
Vogel State Park



Welcome to the Soul of RVing.





Our History

You may remember Dutchmen's original slogan, "If it ain't Dutch, it ain't much." Dutchmen RV has a meaningful longevity, having celebrated our 35th Anniversary, Dutchmen was founded with innovative floorplans, bringing more standard features for less money to the market. This tradition has continued throughout our history, as we continue to deliver award winning floorplans with trailblazing value.

Key Values

Legendary Innovation, Trailblazing Value

Dutchmen was founded on innovative floorplans, bringing more standard features for less money to the market. We continue to deliver on this over 35 years later, delivering legendary innovation for trailblazing value.

The Soul of RVing

RVing is who we are. RVing is about feeling boundless excitement as you reach your next destination. Whether you're boondocking off-the-grid or hooked up at a campsite, each new day unfolds and limitless adventure awaits. RVing is about immersing yourself in laughter and storytelling with family and friends around the campfire. Making memories you won't soon forget. This is Dutchmen. This is the soul of RVing.

The Dutchmen Connection

No matter which Dutchmen RV you choose or where you park it, at Dutchmen you're family. Connect with other RVers in the Dutchmen community. Sharing adventures is a great way to get inspired and get on the road. Gather 'round our social media campfires so we can share some stories with you! When you see another Dutchmen on the road or at the campsite, you know your fellow travelers share the soul of RVing with you.

More standard features. More value. This is the Soul of RVing.

Everything we put into our RVs is designed not only to help you hit the road in comfort and style, but to also help you make memories with family, friends, and fellow travelers along the way. We don't just build and sell RVs—we have the industry's best RV warranty, 100% pre-delivery inspection, and are the leader in parts and service. While other manufacturers offer features as options, we prefer to make those same features standard. We've built a reputation for bringing RV owners more standard features for less money for more than 35 years, and it's a reputation we plan to keep.



100% Pre-Delivery Inspection

At Dutchmen, quality is standard. Every single RV that comes off the line receives its own pre-delivery inspection—a thorough 253-point check to ensure accurate measurements, as well as fully-functional electronics and components.



The Industry's Best RV Warranty

Our industry-best 3 Year Warranty means you don't have to wrangle over the details. We deliver value by clearly outlining the major components we back for the first three years.



The Leader In Parts & Service

Replacement parts. Routine checkups. Expert advice. We've got it all covered. When only the best RV services will suffice, our industry-leading parts and service department is ready to help you.

Tow Vehicle Disclaimer. CAUTION: Owners of Dutchmen recreational vehicles are solely responsible for the selection and proper use of tow vehicles. All customers should consult with a motor vehicle manufacturer or their dealer concerning the purchase and use of suitable tow vehicles for Dutchmen products. Dutchmen disclaims any liability or damages suffered as a result of the selection, operation, use or misuse of a tow vehicle. DUTCHMEN'S LIMITED WARRANTY DOES NOT COVER DAMAGE TO THE RECREATIONAL VEHICLE OR THE TOW VEHICLE AS A RESULT OF THE SELECTION, OPERATION, USE OR MISUSE OF THE TOW VEHICLE. REFERENCE DUTCHMEN MANUFACTURING OWNERS MANUAL FOR LIMITED WARRANTY DETAILS.

Each new day brings
wonderment. The
opportunity to discover
something new. To pursue
your dreams and fill your
soul.

This is the Soul of RVing.



Destination: Aspen Trail LE


Take the scenic route as your free to roam in the Aspen Trail LE. The Aspen Trail is feature rich in amenities with modern design touches in a contemporary style.

Aspen Trail Power Package - Aspen Trail Power Stabilizers, Power Awning and Power Tongue Jack make setting up and breaking down your campsite a breeze.

Large Pass Through Storage - Carry more camping gear and personal belongings with you.

Larger Interior Height - 82" interior height allows for more head room and storage.



 To see more features, visit dutchmen.com

Standard features in every Traditional LE floor plan.



Power Stabilizer Jacks

To assist in stabilizing and balancing.



Power Tongue Jack

No more hand cranking, just a push of a button.



Dual 20lb Propane Tanks

Dual tanks ensure fewer trips to fill up, and longer hot showers and more dinners from the oven.



USB Ports

Charge all your devices in convenient port locations throughout your RV.



Prepped for WiFi 4G LTE

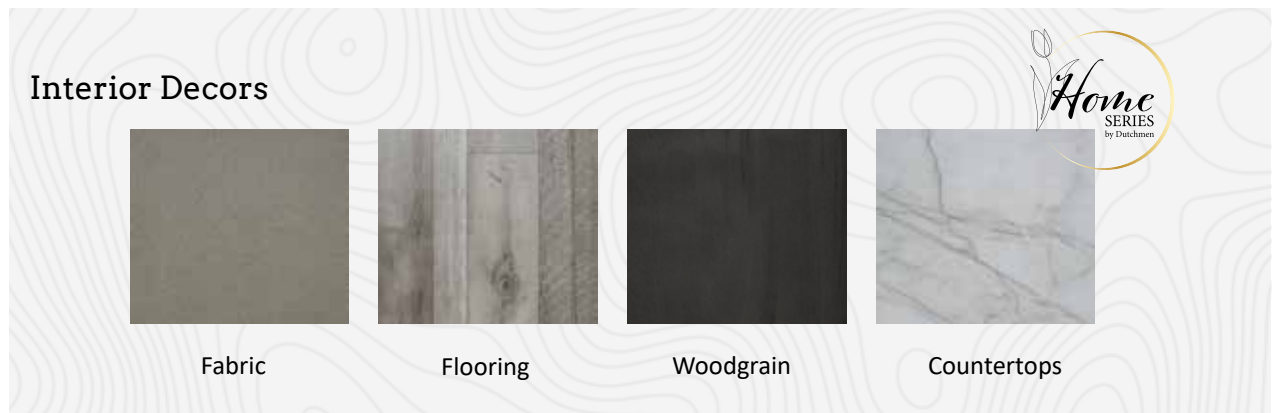
Easily connect your WiFi router in your RV with 4G LTE.

 To see more features, visit dutchmen.com

LE Interior Features:

- Residential Queen Bed w/ Storage*
- Fireplace in Slide-out Models*
- LED Interior Lighting
- 10 cu. ft. 12V Refrigerator
- 3 Burner Cooktop *
- Oven*
- Shower Surround
- Jackknife Sofa
- Galley Sink w/ High Rise Faucet
- Full Extension Drawer Guides Throughout
- Bluetooth Speaker
- No Carpet
- Flush Floor Slide-Outs
- Hinged Entertainment Center w/ Hidden Pantry*

*Select Floor Plans




Exterior Features: Aspen Trail LE

- Power Awning w/ LED Lights
- Battery Disconnect Switch
- Friction Hinge Entry Door
- Roof Solar & Inverter Prep
- On-Demand Tankless Water Heater
- Black Tank Flush
- Magnetic Baggage Door Catches
- Oversized Windows
- Spare Tire
- Rain Gutters
- High Output Furnace
- Large Outside Storage Compartment
- Exterior Grill Mount

- Front & Rear Stabilizer Jacks
- Exterior TV Mount
- Back Up Camera Prep
- Exterior Refrigerator*
- Aluminum Steps
- 15,000 BTU Roof Mount A/C (slide - out models)*

*Select Floor Plans



 To see more features,
visit [dutchmen.com](https://www.dutchmen.com)

Aspen Trail LE 21RD

- Length: 25' 11"
- Weight: 4,613 lbs.
- Sleeps: 4-6
- Hitch: 601 lbs.
- Height: 10'11"



Select Key Features

- Non Slide Out Model
- Rear Living
- Queen Bed

 All info & specs are for units manufactured after 11/1/2023

Aspen Trail LE 25BH

- Length: 28' 8"
- Weight: 4,837 lbs.
- Sleeps: 4-6
- Hitch: 497 lbs.
- Height: 10' 6"



Select Key Features

- Non Slide Out Model
- 3 Burner Cook Top
- Oven
- Bunk Beds
- Storage Under Bunks
- Queen Bed

 All info & specs are for units manufactured after 11/1/2023

Aspen Trail LE 26BH

- Length: 30' 10"
- Weight: 6,099 lbs.
- Sleeps: 4-6
- Hitch: 836 lbs.
- Height: 11' 1"



Select Key Features

- Living Area Slide Out
- Bunks
- Large Shower
- Queen Bed

 All info & specs are for units manufactured after 11/1/2023

Aspen Trail LE 26RL

- Length: 30' 9"
- Weight: TBD
- Sleeps: 4-6
- Hitch: TBD
- Height: 11' 1"



Select Key Features

- Living Area Slide Out
- 2 Rear Recliners
- Queen Bed
- Fireplace
- Wardrobe Closet In Bedroom
- Second Entry Door in Bedroom

 All info & specs are for units manufactured after 11/1/2023

Aspen Trail LE 29BH

- Length: 33' 3"
- Weight: 6,484 lbs.
- Sleeps: 6-8
- Hitch: 821 lbs.
- Height: 11' 3"



Select Key Features

- Living Area Slide Out
- Seperate Bunk Room
- Large Shower

 All info & specs are for units manufactured after 11/1/2023

Aspen Trail LE 29TB

- Length: 33' 9"
- Weight: 6,998 lbs.
- Sleeps: 6-8
- Hitch: 1,020 lbs.
- Height: 11' 3"



Select Key Features

- Living Area Slide Out
- Separate Bunk Room
- Exterior Kitchen
- 3 Burner Cooktop
- Oven
- Hidden Pantry
- Pantry/Closet

 All info & specs are for units manufactured after 11/1/2023

Aspen Trail LE Specifications

Floorplan	Weights (lbs)			Tanks (Gallons)			Dimensions	
	Shipping Weight	Hitch Weight	Carrying Capacity	Fresh Water Capacity	Waste Water Capacity	Gray Water Capacity	Exterior Length	Exterior Height
21RD	4,613	601	2,987	40	42	42	25' 11"	10' 11"
25BH	4,837	497	2,763	21	42	42	28' 8"	10' 6"
26BH	6,099	836	1,501	21	42	42	30' 10"	11' 1"
26RL	TBD	TBD	TBD	21	42	42	30' 9"	11' 1"
29BH	6,484	821	2,316	40	42	42	33' 3"	11' 3"
29TB	6,990	630	1,810	40	42	42	33' 9"	11' 3"

*Length is defined as the distance from the centerline of hitch pin/coupler to rear bumper of trailer.

**Our weights represent how most units are built, inclusive of many commonly-ordered options.

***Fresh water capacity includes water heater capacity.

DISCLAIMER: Product information is as accurate as possible as of the date of brochure publication. All features, floor plans and specifications in this brochure are subject to change without notice. Please consult Dutchmen's website at www.Dutchmen.com for current product information and specifications.

Aspen Trail 17 Series

Exterior Features:

- Power Awning
- Rear Stabilizer Jacks
- Bumper w/Sewer Hose Storage
- 6 gal. LP Water Heater w/DSI
- 20 lb. LP Bottle
- 30 Amp Power Cord
- 35 Amp Converter
- Side Solar Port

Interior Features:

- High Output Furnace
- 8,000 BTU A/C
- 3.3 cu. ft. 12V Refrigerator
- LED Interior Lighting
- 2 Burner Cooktop
- Microwave
- Galley Sink w/ High Rise Faucet
- Night Shades Throughout
- 40" Booth Dinette



Rear Stabilizer Jacks



20 lb. Propane



Prepped for WiFi



Power Awning



Efficiency Air Conditioner

Aspen Trail LE 17 Series 17BH*



Select Key Features

- Length: 21' 5"
- Weight: 3,069 lbs.
- Sleeps: 2-4
- Hitch: 396 lbs.
- Height: 9'2"

i All info & specs are for units manufactured after 11/1/2023

*Special Build

Aspen Trail 17 SERIES 17RB*



Select Key Features

- Length: 21' 5"
- Weight: TBD
- Sleeps: 2-3
- Hitch: TBD
- Height: 9'2"

 All info & specs are for units manufactured after 11/1/2023

*Special Build

Interior & Exterior Features: Aspen Trail LE MINI

Exterior Features:

- Power Awning
- Rear Stabilizer Jacks
- Single 20 lb. LP Bottle
- 30 Amp Power Cord
- 35 Amp Converter
- Spare Tire
- Solar Prep w/ Inverter Prep
- Tankless Water Heater

*Select Floor Plans



Interior Features:

- High Output Furnace
- 13.5 Roof Mounted A/C
- 10 cu. ft. 12V Refrigerator
- LED Interior Lighting
- 2 Burner Cooktop
- Microwave
- Galley Sink w/ High Rise Faucet
- Night Shades Throughout
- Upgraded Flooring



 To see more features, visit dutchmen.com

Aspen Trail LE Mini 1860RK

- Length: 21' 5"
- Weight: 3,577 lbs.
- Sleeps: 2-4
- Hitch: 475 lbs.
- Height: 9'11"



Select Key Features

- Rear Kitchen
- 2 Burner Cook Top
- Medicine Cabinet
- Storage in Bath

 All info & specs are for units manufactured after 11/1/2023

Aspen Trail LE Mini 1950BH

- Length: 23' 5"
- Weight: 3,676 lbs.
- Sleeps: 2-4
- Hitch: 511 lbs.
- Height: 9'9"



Select Key Features

- Bunk Beds
- Large Shower
- Exterior Refrigerator

 All info & specs are for units manufactured after 11/1/2023

Aspen Trail LE Mini 1980BH

- Length: 23' 5"
- Weight: 4,325 lbs.
- Sleeps: 2-4
- Hitch: 606 lbs.
- Height: 10'9"



Select Key Features

- Bunk Beds
- Large Bathroom
- Exterior Refrigerator

 All info & specs are for units manufactured after 11/1/2023

Aspen Trail 17 & Mini Series' Specifications

Floorplan	Weights (lbs)			Tanks (Gallons)			Dimensions	
	Shipping Weight	Hitch Weight	Carrying Capacity	Fresh Water Capacity	Waste Water Capacity	Gray Water Capacity	Exterior Length	Exterior Height
17BH	3,069	396	921	27	28	28	21' 5"	9' 2"
17RB	TBD	TBD	TBD	28	28	28	21' 5"	9' 2"
1860RK	3,577	475	823	21	28	28	21' 5"	9' 11"
1950BH	3,676	511	724	27	28	28	23' 5"	9' 9"
1980BH	4,325	606	1,285	27	28	28	23' 5"	10' 9"

*Length is defined as the distance from the centerline of hitch pin/coupler to rear bumper of trailer.

**Our weights represent how most units are built, inclusive of many commonly-ordered options.

***Fresh water capacity includes water heater capacity.

DISCLAIMER: Product information is as accurate as possible as of the date of brochure publication. All features, floor plans and specifications in this brochure are subject to change without notice. Please consult Dutchmen's website at www.Dutchmen.com for current product information and specifications.

Aspen Trail LE WEST COAST

Exterior Features:

- Power Awning w/ LED Lights
- Front & Rear Stabilizer Jacks
- Battery Disconnect Switch
- Friction Hinge Entry Door
- On-Demand Tankless Water Heater
- Black Tank Flush
- Magnetic Baggage Door Catches
- Oversized Windows
- Rain Gutters
- High Output Furnace
- 13.5 BTU Roof Mount A/C (slide -out models)*
- Solar Spirit II Package - 100 W Solar Panel, 10 Amp Charge Controller, Side Port

Interior Features:

- Residential Queen Bed
- Fireplace in ALL Slide-out Models*
- LED Interior Lighting
- 10 cu. ft. 12V Refrigerator
- 3 Burner Cooktop*
- Shower Surround
- Jackknife Sofa
- Galley Sink w/ High Rise Faucet
- Full Extension Drawer Guides Throughout
- Bluetooth Speaker
- No Carpet
- Flush Floor Slide-Outs

* Select Floor Plans



More Standard Features



Aspen Trail LE 19RBWE

- Length: 24' 8"
- Weight: 4,283 lbs.
- Sleeps: 2-3
- Hitch: 596 lbs.
- Height: 11' 0"



Select Key Features

- Non Slide Out Model
- Queen Bed
- Radius Shower
- Pantry/Closet

 All info & specs are for units manufactured after 11/1/2023

Aspen Trail LE 21RDWE

- Length: 25' 7"
- Weight: 4,407 lbs.
- Sleeps: 4-6
- Hitch: 553 lbs.
- Height: 11' 0"



Select Key Features

- Non Slide Out Model
- Rear Living Area
- Queen Bed

 All info & specs are for units manufactured after 11/1/2023

Aspen Trail LE 23BHWE

- Length: 27' 10"
- Weight: 5,613 lbs.
- Sleeps: 4-6
- Hitch: 648 lbs.
- Height: 11' 0"



Select Key Features

- Dinette Booth Slide
- Bunks
- Queen Bed

 All info & specs are for units manufactured after 11/1/2023

Aspen Trail LE 23RKWE

- Length: 27' 5"
- Weight: 5,600 lbs.
- Sleeps: 4-6
- Hitch: 834 lbs.
- Height: 11' 4"



Select Key Features

- Rear Kitchen
- Oven
- Living Slide Out
- Radius Shower
- Queen Bed
- Rear Entry Door

 All info & specs are for units manufactured after 11/1/2023

Aspen Trail LE 24BHWE

- Length: 28' 8"
- Weight: 4,875 lbs.
- Sleeps: 4-6
- Hitch: 586 lbs.
- Height: 11' 0"



Select Key Features

- Non Slide Out Model
- Bunks
- Queen Bed
- 3 Burner Cook Top

 All info & specs are for units manufactured after 11/1/2023

Aspen Trail LE 26BHWE

- Length: 30' 9"
- Weight: 6,115 lbs.
- Sleeps: 4-6
- Hitch: 822 lbs.
- Height: 11' 4"



Select Key Features

- Living Dining Slide Out
- Bunks
- 3 Burner Cook Top
- Oven
- Queen Bed

 All info & specs are for units manufactured after 11/1/2023

Aspen Trail LE 26RLWE

- Length: TBD
- Weight: TBD
- Sleeps: TBD
- Hitch: TBD
- Height: TBD



Select Key Features

- Living Dining Slide Out
- 2 Rear Recliners
- Fireplace
- Rear Entry Door

 All info & specs are for units manufactured after 11/1/2023

Aspen Trail LE 28BHWE

- Length: 32' 6"
- Weight: 6,418 lbs.
- Sleeps: 4-6
- Hitch: 825 lbs.
- Height: 11' 4"



Select Key Features

- Living Dining Slide Out
- Bunks
- Large Shower
- Rear Entry in Bath
- Queen Bed

 All info & specs are for units manufactured after 11/1/2023

Aspen Trail LE 28RKWE

- Length: 33' 1"
- Weight: 6,604 lbs.
- Sleeps: 4-6
- Hitch: 926 lbs.
- Height: 11' 2"



Select Key Features

- Rear Kitchen
- 3 Burner Cook Top
- Oven
- 2 Recliners
- Queen Bed
- Large Shower

 All info & specs are for units manufactured after 11/1/2023

Aspen Trail LE 29BHWE

- Length: 33' 3"
- Weight: 6,561 lbs.
- Sleeps: 4-6
- Hitch: 833 lbs.
- Height: 11' 3"



Select Key Features

- Living Dining Slide Out
- Separate Bunk Room
- 3 Burner Cook Top
- Oven
- Queen Bed

 All info & specs are for units manufactured after 11/1/2023

Aspen Trail LE West Coast Specifications

Floorplan	Weights (lbs)			Tanks (Gallons)			Dimensions	
	Shipping Weight	Hitch Weight	Carrying Capacity	Fresh Water Capacity	Waste Water Capacity	Gray Water Capacity	Exterior Length	Exterior Height
19RBWE	4,283	596	3,317	46	38	38	24' 8"	11' 0"
21RDWE	4,407	553	3,193	46	38	38	25' 7"	11' 0"
23BHSWE	5,613	648	1,987	46	38	38	27' 10"	11' 0"
23RKSWE	5,600	834	2,000	46	38	38	27' 5"	11' 4"
24BHWE	4,875	586	2,725	46	38	38	28' 8"	11' 0"
26BHWE	6,115	822	1,485	52	38	38	30' 9"	11' 4"
26RLWE	TBD	TBD	TBD	TBD	TBD	TBD	TBD	TBD
28BHWE	6,418	825	3,262	46	38	38	32' 6"	11' 4"
28RKWE	6,604	926	3,076	46	38	76	33' 1"	11' 2"
29BHWE	6,561	833	2,239	52	38	38	33' 3"	11' 3"

*Length is defined as the distance from the centerline of hitch pin/coupler to rear bumper of trailer.

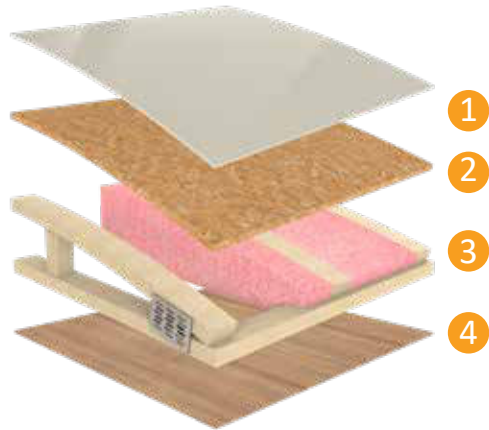
**Our weights represent how most units are built, inclusive of many commonly-ordered options.

***Fresh water capacity includes water heater capacity.

DISCLAIMER: Product information is as accurate as possible as of the date of brochure publication. All features, floor plans and specifications in this brochure are subject to change without notice. Please consult Dutchmen's website at www.Dutchmen.com for current product information and specifications.

See the Dutchmen® Construction Advantage.

We put a great amount of thought into every RV we design and build. From strong frames, to sturdy walls and insulation, we build every RV to take you on many adventures to come.

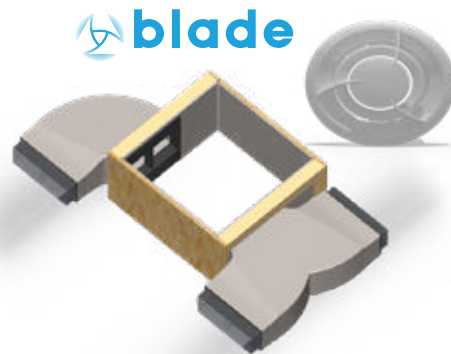
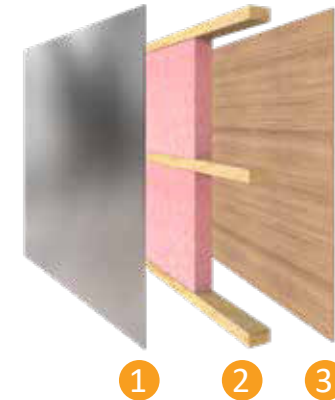


Durable Roof Structure

- 1 TPO Roof
- 2 3/8" Decking
- 3 Fiberglass Insulation
- 4 Lauan Interior Panel

Insulated Structure

- 1 Metal Exterior Panel
- 2 Wood Frame with R7 Thermal Insulation
- 3 Lauan Interior Panel



Blade Air Flow System

This design reduces air turbulence and noise accelerating airflow with duct elbows and wyes that feature enlarged inlets and narrow as they push cooled air from the AC through the length of the ducting.

(On Ducted AC Models Only)

Make the Dutchmen® Connection.

Connect with other RVers in the Dutchmen community. Sharing adventures is a great way to get inspired and get on the road. Gather 'round our social media campfires with us—and be sure to follow us so we can share with you!



dutchmen.com

Visit us online to see all the Dutchmen brands, innovative models, and spacious floor plans.

*Length is defined as the distance from the centerline of hitch pin/coupler to rear bumper of trailer.

**Our weights represent how most units are built, inclusive of many commonly-ordered options.

***Fresh water capacity includes water heater capacity.

DISCLAIMER: Product information is as accurate as possible as of the date of brochure publication. All features, floor plans and specifications in this brochure are subject to change without notice. Please consult Dutchmen's website at www.Dutchmen.com for current product information

Contact Sales: 574.537.0600

